



# Master Value LEDtube T8

## MASTER LEDtube VLE 1500mm HO 20.5W 840 T8

A high-performance LED solution, the professional Master Value LED tube is ideal for replacing T8 fluorescent lamps using EM ballast or installing directly on the mains. This product provides a uniform lighting effect for use in all general lighting, as well as instant energy-efficiency, making for an environmentally friendly solution.

### Product data

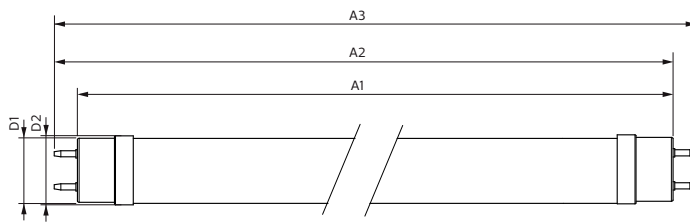
General Information		Lamp current (max.)	
Cap base	G13 [ Medium Bi-Pin Fluorescent]		97 mA
EU RoHS compliant	Yes	Lamp current (min.)	89 mA
Nominal lifetime (nom.)	50000 h	Starting time (nom.)	0.5 s
Switching cycle	200,000X	Warm-up time to 60% light (nom.)	0.5 s
		Power factor (nom.)	0.9
		Voltage (Nom)	220-240 V
Light Technical		Temperature	
Colour Code	840 [ CCT of 4,000 K]	T-ambient (max.)	45 °C
Beam Angle (Nom)	240 °	T-ambient (min.)	-20 °C
Luminous flux (nom.)	3100 lm	T storage (max.)	65 °C
Colour designation	Cool White (CW)	T storage (min.)	-40 °C
Correlated Colour Temperature (Nom)	4000 K	T-Case maximum (nom.)	60 °C
Luminous efficacy (rated) (nom.)	151.00 lm/W		
Colour consistency	<6	Controls and Dimming	
Colour rendering index (nom.)	83	Dimmable	No
LLMF at end of nominal lifetime (nom.)	70 %		
Operating and Electrical		Mechanical and Housing	
Input frequency	50 to 60 Hz	Bulb material	Glass
Power (Rated) (Nom)	20.5 W		

# Master Value LEDtube T8

Product length	1500 mm
<b>Approval and Application</b>	
Energy efficiency label (EEL)	A++
Energy-saving product	Yes
Approval marks	RoHS compliance CE marking KEMA Keur certificate
Energy consumption kWh/1,000 hours	21 kWh
<b>Product Data</b>	
Full product code	871869964693600

Order product name	MASTER LEDtube VLE 1500mm HO 20.5W 840 T8
EAN/UPC – product	8718699646936
Order code	64693600
Numerator – quantity per pack	1
SAP numerator – packs per outer box	10
Material no. (12 NC)	929002021802
Net Weight (Piece)	0.270 kg

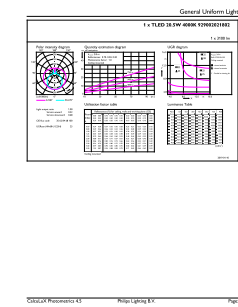
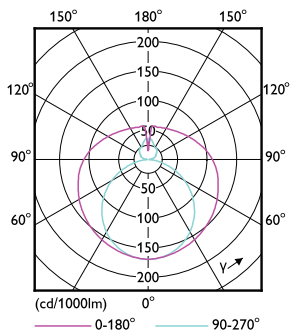
## Dimensional drawing



Product	D1	D2	A1	A2	A3
MASTER LEDtube VLE 1500mm HO 20.5W 840 T8	25.8 mm	28 mm	1498.7 mm	1505.8 mm	1512.9 mm

## TLED 5ft 220-240V20.5-58W3100lm4000K G13

## Photometric data



## LEDtube 220-240V G13

## LEDtube 220-240V G13 5ft 3100lm 4000k

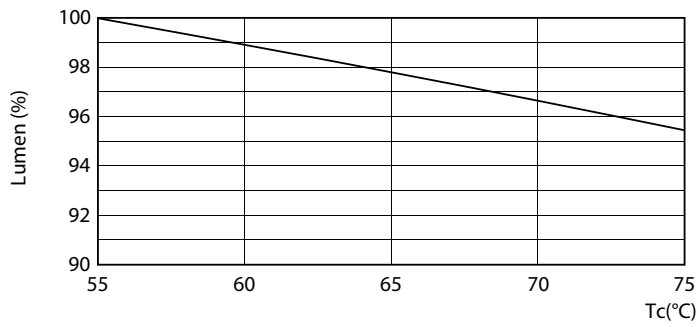
# Master Value LEDtube T8

## Photometric data



LEDtube 220-240V G13 4000k

## Lifetime



LEDtube 220-240V G13 LumenVsTc



LEDtube 220-240V G13



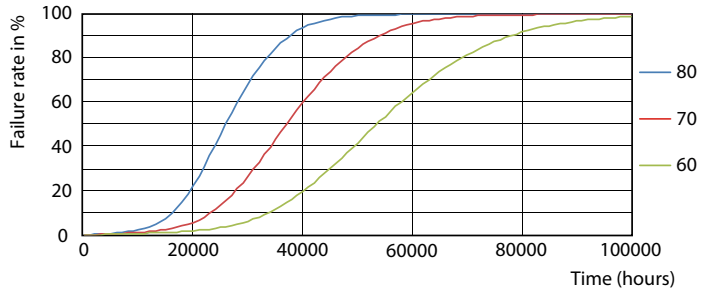
LEDtube 220-240V G13



LEDtube 220-240V G13 LifetimeVsTc

# Master Value LEDtube T8

## Lifetime



LEDtube 220-240V G13 FailureRate

