

# T5

## 25T5HO/COR/46-840/MF35/G 25/1

Philips T5 LED tubes offer an affordable, energy saving retrofit solution. The T5 lamps have been engineered to withstand the test of time with a 50,000-hour lifetime and a limited 5-year warranty to back it up. The lighting performance effectively replaces conventional fluorescent T5 HO or T5 HE lamps. Available in either InstantFit (Type A or Type C) or MainsFit (Type B / Ballast bypass), Philips T5 TLEDs provide a variety of options for any application.

### Product data

General Information	
Cap-Base	G5 [ G5]
EU RoHS compliant	Yes
Nominal Lifetime (Nom)	50000 h
Switching Cycle	50000X
Light Technical	
Color Code	840 [ CCT of 4000K]
Beam Angle (Nom)	200 °
Luminous Flux (Nom)	3500 lm
Color Designation	Cool White (CW)
Correlated Color Temperature (Nom)	4000 K
Luminous Efficacy (rated) (Nom)	140.00 lm/W
Color Consistency	<6
Color Rendering Index (Nom)	80
LLMF At End Of Nominal Lifetime (Nom)	70 %
Operating and Electrical	
Input Frequency	50 to 60 Hz
Power (Nom)	25 W
Lamp Current (Max)	210 mA

Lamp Current (Min)	95 mA
Starting Time (Nom)	0.45 s
Warm Up Time to 60% Light (Nom)	0.5 s
UL Type	Type B - bypass the ballast
Power Factor (Nom)	0.9
Voltage (Nom)	120-277 V

Temperature	
T-Ambient (Max)	45 °C
T-Ambient (Min)	-20 °C
T-Storage (Max)	65 °C
T-Storage (Min)	-40 °C
T-Case Maximum (Nom)	75 °C

Controls and Dimming	
Dimmable	No

Mechanical and Housing	
Product Length	1200 mm

# T5

## Approval and Application

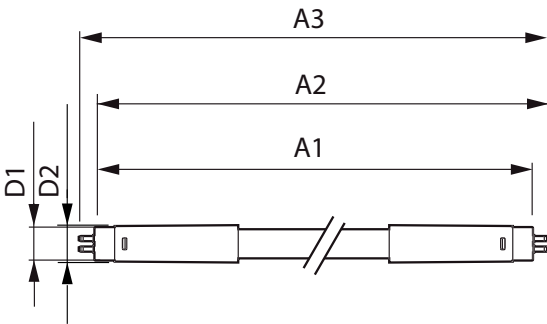
Energy Efficiency Label (EEL)	Not applicable
Energy Saving Product	Yes
Approval Marks	RoHS compliance UL certificate DLC compliance
Energy Consumption kWh/1000 h	- kWh

## Product Data

Order product name	25T5HO/COR/46-840/MF35/G 25/1
--------------------	-------------------------------

EAN/UPC - Product	046677542061
Order code	929001992604
Numerator - Quantity Per Pack	1
Numerator - Packs per outer box	25
Material Nr. (12NC)	929001992604
Net Weight (Piece)	0.215 kg

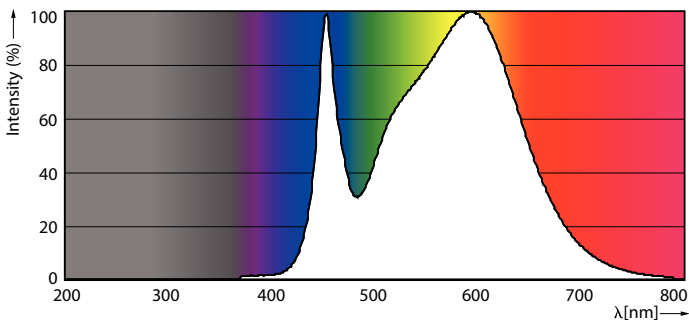
## Dimensional drawing



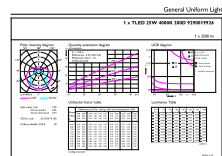
TLED 120-277V25W-54W 3500lm 4000K G5 ND

Product	D1	D2	A1	A2	A3
25T5HO/COR/46-840/MF35/G 25/1	15.3 mm	18.6 mm	1147.8 mm	1154.9 mm	1162 mm

## Photometric data



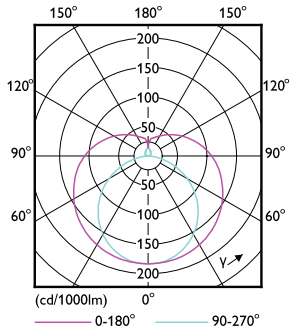
LEDtube G5 4000K



OSRAM Photometric 11 - Strip Lighting 11 - Page 11

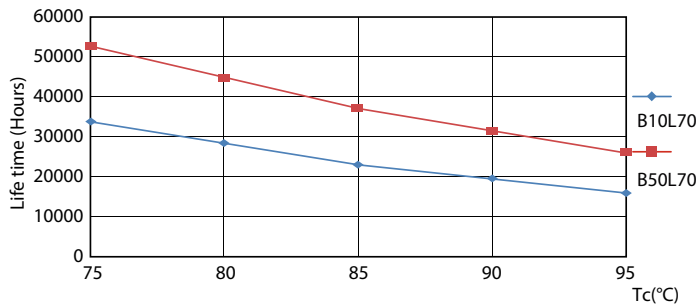
LEDtube G5 4000K

Photometric data

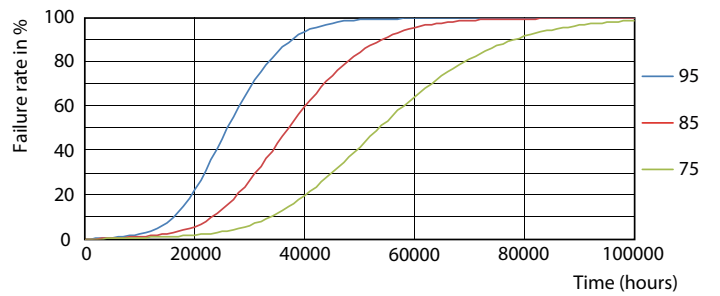


LEDtube G5 25W

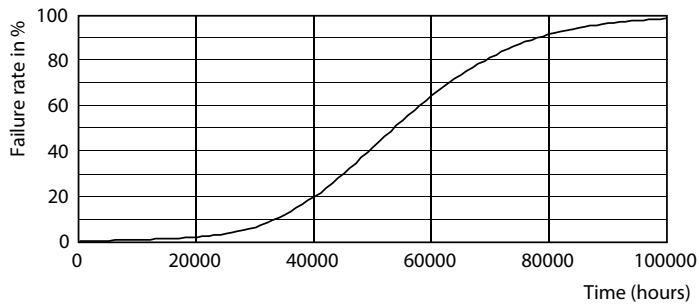
Lifetime



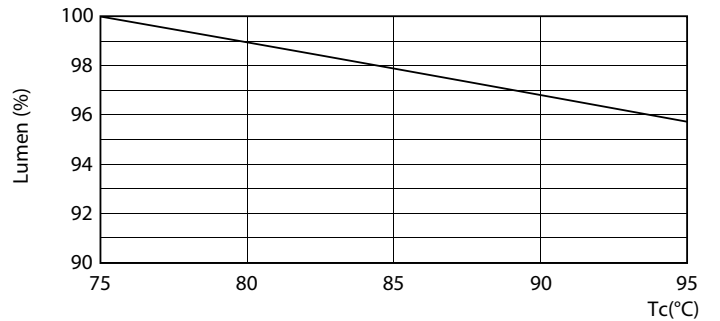
LEDtube G5 25W LifetimeVsTc



LEDtube G5 25W FailureRate



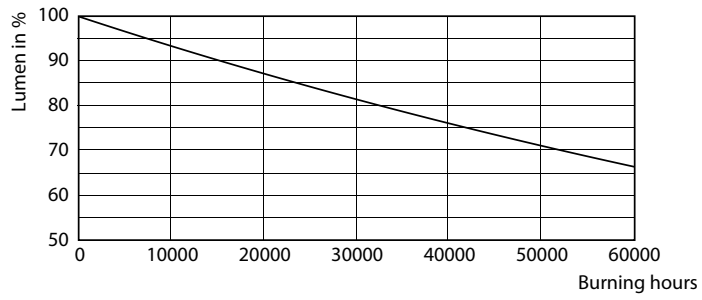
LEDtube G5 25W



LEDtube G5 25W LumenVsTc

# T5

## Lifetime



LEDtube G5 25W

