



T8

10T8/COR/48-850/IF16/G 25/1

Our TLEDs are available in InstantFit (Type A / Type C) or MainsFit (Ballast bypass / Type B) versions. The InstantFit lamps work on a broad variety of ballasts and LED drivers. Only InstantFit has over 15,000 lamp & ballast combinations delivering even light output, energy savings and a long lifetime. Our MainsFit products feature a double-ended design, simplifying installation while a proprietary safety circuit minimizes a shock risk. Lamp sizes range from 2-foot to 8-foot and U-bend with a variety of lumen outputs.

Product data

General Information	
Cap-Base	G13 [Medium Bi-Pin Fluorescent]
EU RoHS compliant	Yes
Nominal Lifetime (Nom)	50000 h
Switching Cycle	50000X
Light Technical	
Color Code	850 [CCT of 5000K]
Beam Angle (Nom)	240 °
Luminous Flux (Nom)	1600 lm
Color Designation	Daylight
Correlated Color Temperature (Nom)	5000 K
Luminous Efficacy (rated) (Nom)	160.00 lm/W
Color Consistency	<5
Color Rendering Index (Nom)	82
LLMF At End Of Nominal Lifetime (Nom)	70 %
Operating and Electrical	
Input Frequency	25000-105000 Hz
Power (Nom)	10 W

Lamp Current (Max)	260 mA
Lamp Current (Min)	100 mA
Starting Time (Nom)	0.5 s
Warm Up Time to 60% Light (Nom)	0.5 s
UL Type	Type A - works on ballast Type C - works with dedicated LED driver Type A+C - works with both ballasts and the LED driver
Power Factor (Nom)	0.9
Voltage (Nom)	120-277, 347 V
Temperature	
T-Ambient (Max)	45 °C
T-Ambient (Min)	-20 °C
T-Storage (Max)	65 °C
T-Storage (Min)	-40 °C
T-Case Maximum (Nom)	50 °C
Controls and Dimming	
Dimmable	No

T8

Mechanical and Housing

Product Length 1200 mm

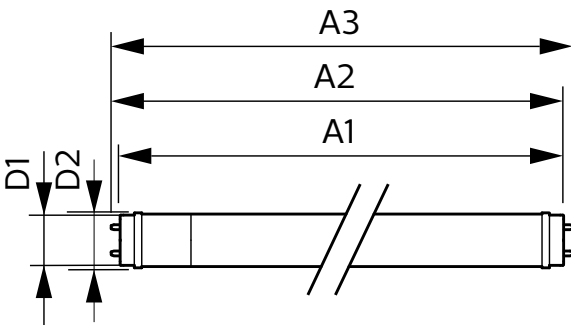
Approval and Application

Energy Efficiency Label (EEL) Not applicable
 Energy Saving Product Yes
 Approval Marks UL certificate RoHS compliance DLC compliance
 Energy Consumption kWh/1000 h - kWh
 Energy Certifications DLC Standard

Product Data

Order product name 10T8/COR/48-850/IF16/G 25/1
 EAN/UPC - Product 046677541996
 Order code 929001991804
 Numerator - Quantity Per Pack 1
 Numerator - Packs per outer box 25
 Material Nr. (12NC) 929001991804
 Net Weight (Piece) 0.215 kg

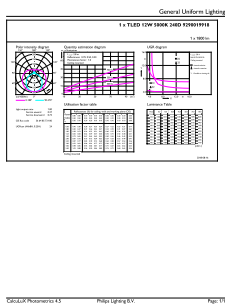
Dimensional drawing



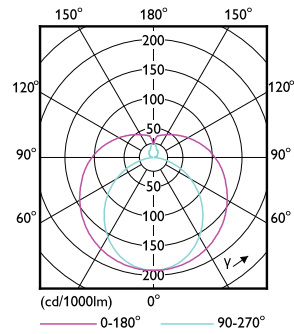
TLED 1200mmT8 120-277 10.5W 1650lm 5000K

Product	D1	D2	A1	A2	A3
10T8/COR/48-850/IF16/G 25/1	25.7 mm	28 mm	1198.1 mm	1205.2 mm	1212.3 mm

Photometric data

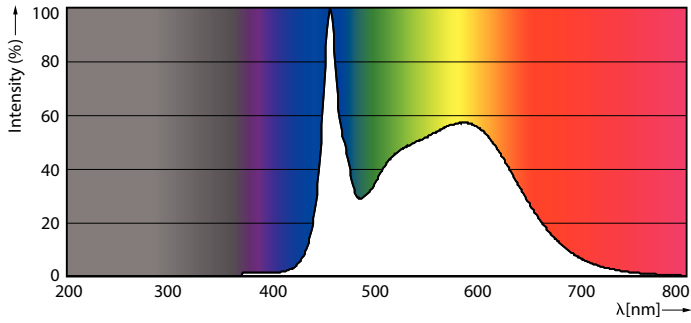


LEDtube 10W G13 850 ND



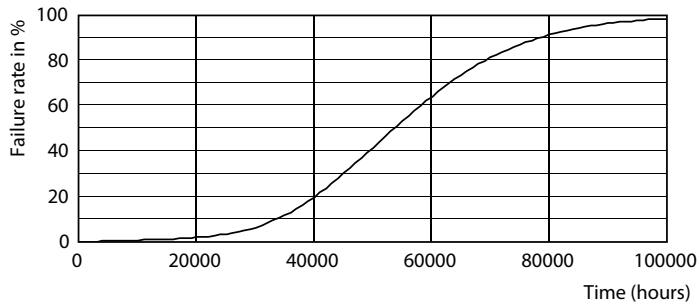
LEDtube 10W G13 850 ND

Photometric data

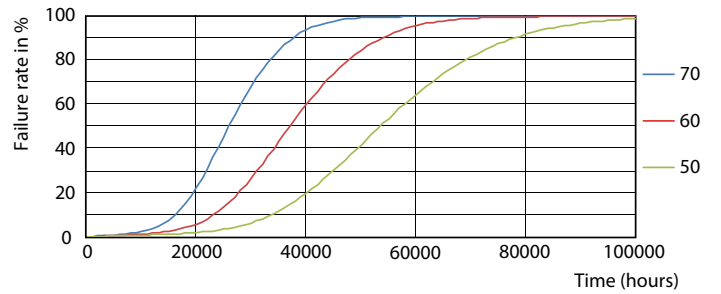


LEDtube 10W G13 850 ND

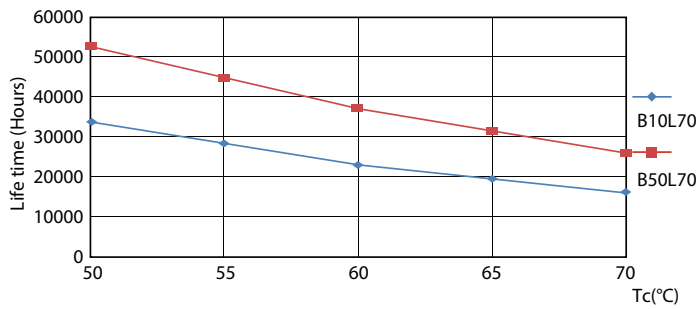
Lifetime



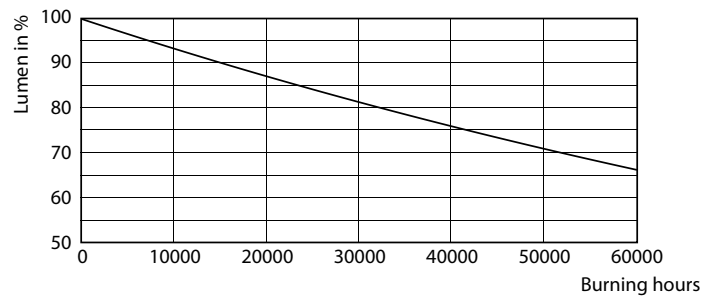
LEDtube 10W G13 850 ND



LEDtube 10W G13 850 ND



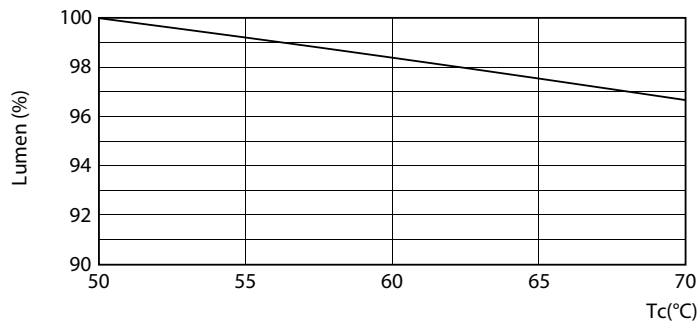
LEDtube 10W G13 850 ND



LEDtube 10W G13 850 ND

T8

Lifetime



LEDtube 10W G13 850 ND

