



MASTER LEDtube EM/ Mains T8

MASTER LEDtube 1050mm 16W 840 T8

The Philips MASTER LEDtube integrates a LED light source into a traditional fluorescent form factor. Its unique design creates a perfectly uniform visual appearance which cannot be distinguished from traditional fluorescent. For those that are looking for value for money within limited budget and re-lamping efforts for better light effect and lifetime.

Warnings and Safety

- NOTES: The overall energy efficiency and light distribution of any installation that uses these lamps are determined by the design of the installation.

Product data

General Information	
Cap-Base	G13 ROT (Rotating) [Medium Bi-Pin Fluorescent]
EU RoHS compliant	Yes
Nominal Lifetime (Nom)	50000 h
Switching Cycle	200000X
Light Technical	
Color Code	840 [CCT of 4000K]
Beam Angle (Nom)	160 °
Luminous Flux (Nom)	2500 lm
Color Designation	Cool White (CW)
Correlated Color Temperature (Nom)	4000 K
Luminous Efficacy (rated) (Nom)	156.00 lm/W
Color Consistency	<6
Color Rendering Index (Nom)	83

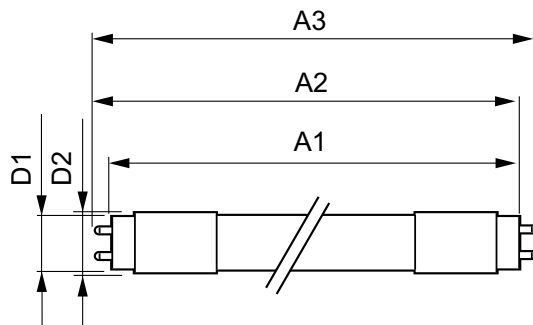
LLMF At End Of Nominal Lifetime (Nom) 70 %	
Operating and Electrical	
Input Frequency	50 to 60 Hz
Power (Nom)	16 W
Lamp Current (Max)	83 mA
Lamp Current (Min)	61 mA
Starting Time (Nom)	0.5 s
Warm Up Time to 60% Light (Nom)	0.5 s
Power Factor (Nom)	0.9
Voltage (Nom)	220-240 V
Temperature	
T-Ambient (Max)	45 °C
T-Ambient (Min)	-20 °C
T-Storage (Max)	65 °C

MASTER LEDtube EM/Mains T8

T-Storage (Min)	-40 °C
T-Case Maximum (Nom)	55 °C
Controls and Dimming	
Dimmable	No
Mechanical and Housing	
Bulb Material	Plastic
Product Length	1100 mm
Approval and Application	
Energy Efficiency Label (EEL)	A++
Energy Saving Product	Yes
Approval Marks	RoHS compliance CE marking KEMA Keur certificate

Energy Consumption kWh/1000 h	16 kWh
Product Data	
Full product code	871869961602100
Order product name	MASTER LEDtube 1050mm 16W 840 T8
EAN/UPC - Product	8718699616021
Order code	929001961102
Numerator - Quantity Per Pack	1
Numerator - Packs per outer box	10
Material Nr. (12NC)	929001961102
Net Weight (Piece)	0.212 kg

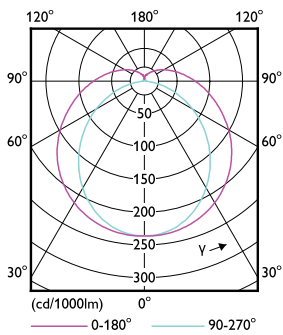
Dimensional drawing



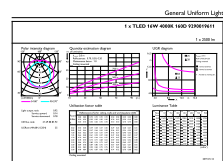
TLED 3.5ft 16-38W 2500lm 4000K G13

Product	D1	D2	A1	A2	A3
MASTER LEDtube 1050mm 16W 840 T8	25.8 mm	28 mm	1045.8 mm	1052.9 mm	1060 mm

Photometric data



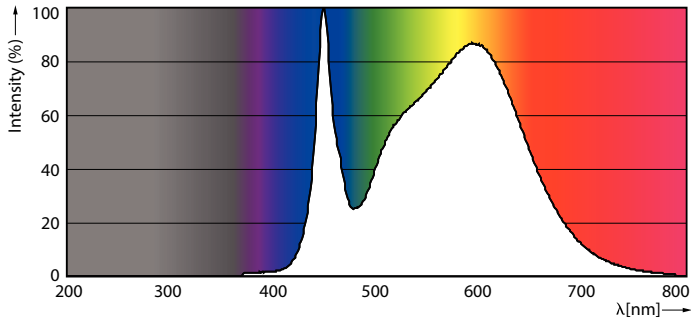
LEDtube 3,5ft G13



LEDtube 3,5ft G13

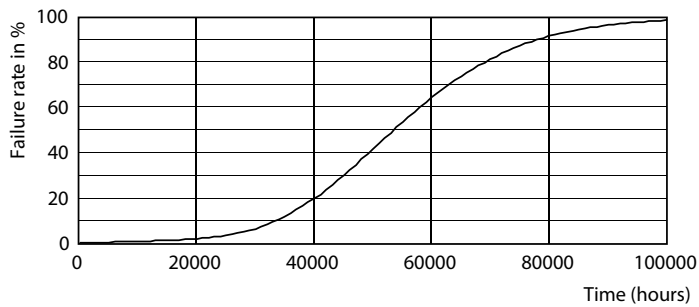
MASTER LEDtube EM/Mains T8

Photometric data

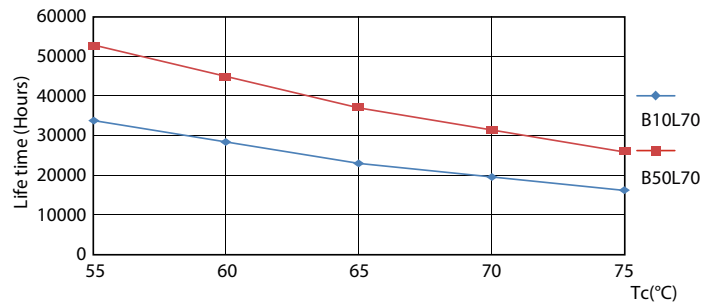


LEDtube 3,5ft G13

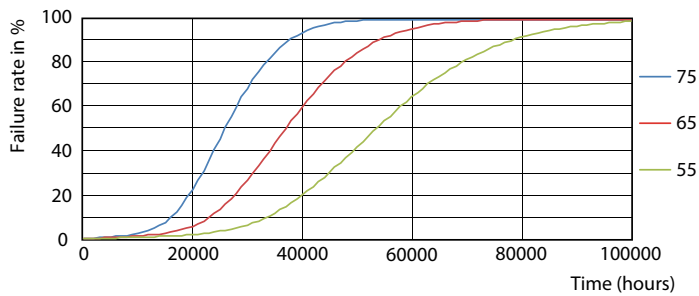
Lifetime



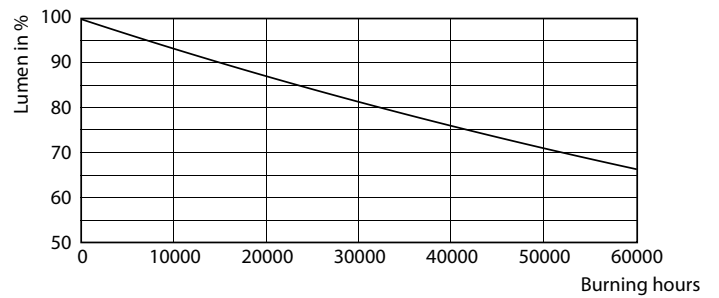
LEDtube MAS 16W G13 830 ND



LEDtube MAS 16W G13 830 ND



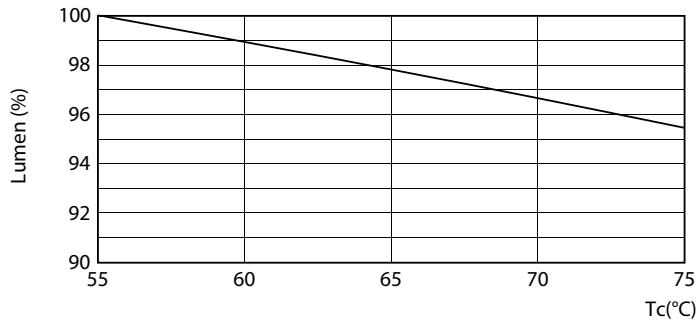
LEDtube MAS 16W G13 830 ND



LEDtube MAS 16W G13 830 ND

MASTER LEDtube EM/Mains T8

Lifetime



LEDtube MAS 16W G13 830 ND

