



T8

15.5T8-6U/COR/24-840/MF21/G 10/1

Our TLEDs are available in InstantFit (Type A / Type C) or MainsFit (Ballast bypass / Type B) versions. The InstantFit lamps work on a broad variety of ballasts and LED drivers. Only InstantFit has over 15,000 lamp & ballast combinations delivering even light output, energy savings and a long lifetime. Our MainsFit products feature a double-ended design, simplifying installation while a proprietary safety circuit minimizes a shock risk. Lamp sizes range from 2-foot to 8-foot and U-bend with a variety of lumen outputs.

Product data

General Information	
Cap-Base	2G13 [2G13]
EU RoHS compliant	Yes
Nominal Lifetime (Nom)	50000 h
Switching Cycle	50000X
Light Technical	
Color Code	840 [CCT of 4000K]
Beam Angle (Nom)	180 °
Luminous Flux (Nom)	2100 lm
Color Designation	Cool White (CW)
Correlated Color Temperature (Nom)	4000 K
Luminous Efficacy (rated) (Nom)	135.00 lm/W
Color Consistency	<6
Color Rendering Index (Nom)	82
LLMF At End Of Nominal Lifetime (Nom)	70 %
Operating and Electrical	
Input Frequency	50 to 60 Hz
Power (Nom)	15.5 W

Lamp Current (Max)	140 mA
Lamp Current (Min)	63 mA
Starting Time (Nom)	0.9 s
Warm Up Time to 60% Light (Nom)	0.9 s
UL Type	Type B - bypass the ballast
Power Factor (Nom)	0.9
Voltage (Nom)	120-277 V
Temperature	
T-Ambient (Max)	45 °C
T-Ambient (Min)	-20 °C
T-Storage (Max)	65 °C
T-Storage (Min)	-40 °C
T-Case Maximum (Nom)	51 °C
Controls and Dimming	
Dimmable	No

T8

Mechanical and Housing

Product Length 600 mm

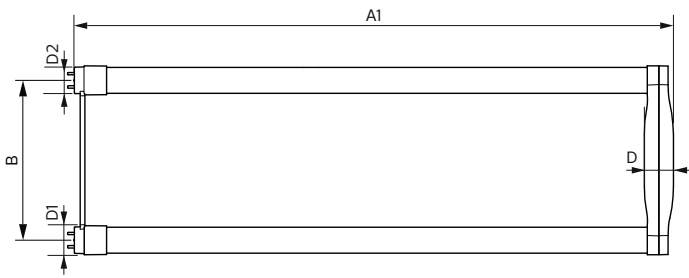
Approval and Application

Energy Efficiency Label (EEL) Not applicable
 Energy Saving Product Yes
 Approval Marks UL certificate RoHS compliance DLC compliance
 Energy Consumption kWh/1000 h - kWh
 Energy Certifications DLC Standard

Product Data

Order product name 15.5T8-6U/COR/24-840/MF21/G 10/1
 EAN/UPC - Product 046677535551
 Order code 929001934804
 Numerator - Quantity Per Pack 1
 Numerator - Packs per outer box 10
 Material Nr. (12NC) 929001934804
 Net Weight (Piece) 0.230 kg

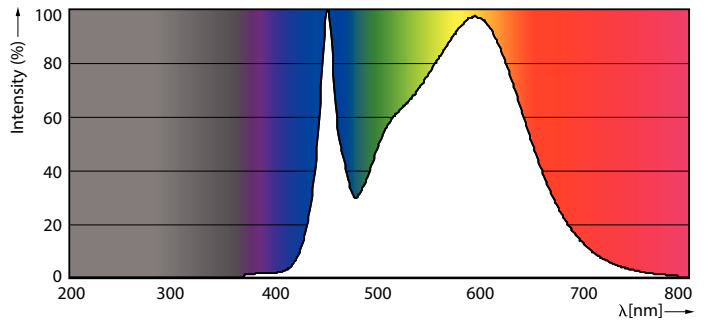
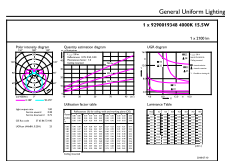
Dimensional drawing



Product	D1	D2	B	A1	D
15.5T8-6U/COR/24-840/MF21/G 10/1	25.7 mm	28.1 mm	152 mm	570 mm	27.9 mm

TLED MF CorePro U bent 2100lm 4000K

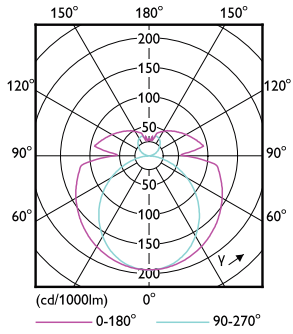
Photometric data



15-5W 2G13 840 4000K

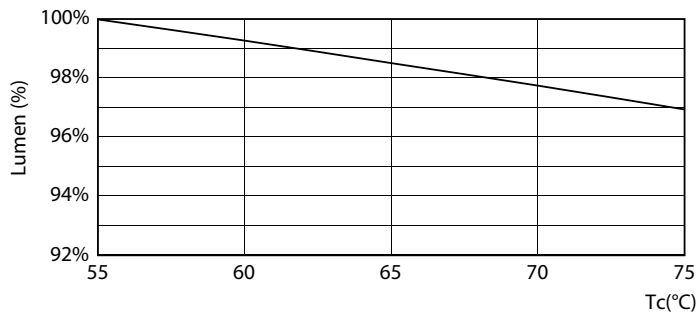
15-5W 2G13

Photometric data

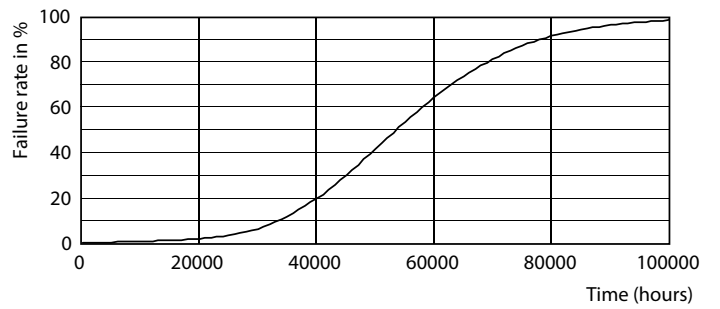


15-5W 2G13 830 3000K

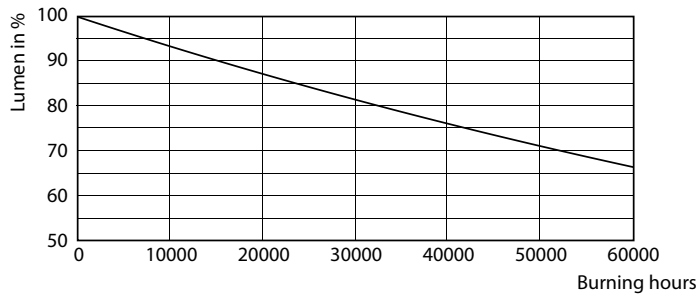
Lifetime



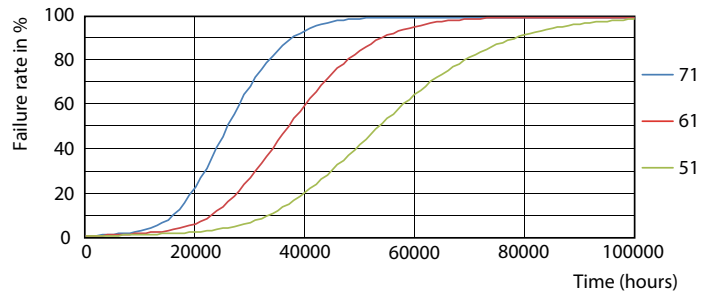
15-5W 2G13



8.5W G13



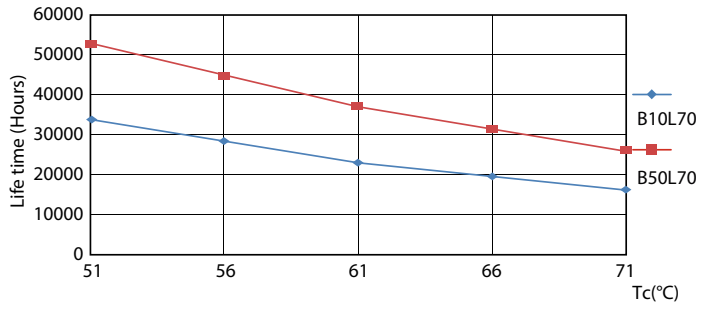
8.5W G13



15-5W 2G13

T8

Lifetime



15-5W 2G13

