



T8

15.5T8-6U/COR/24-835/MF20/G 10/1

Our TLEDs are available in InstantFit (Type A / Type C) or MainsFit (Ballast bypass / Type B) versions. The InstantFit lamps work on a broad variety of ballasts and LED drivers. Only InstantFit has over 15,000 lamp & ballast combinations delivering even light output, energy savings and a long lifetime. Our MainsFit products feature a double-ended design, simplifying installation while a proprietary safety circuit minimizes a shock risk. Lamp sizes range from 2-foot to 8-foot and U-bend with a variety of lumen outputs.

Product data

General Information	
Cap-Base	2G13 [2G13]
EU RoHS compliant	Yes
Nominal Lifetime (Nom)	50000 h
Switching Cycle	50000X
Light Technical	
Color Code	835 [CCT of 3500K]
Beam Angle (Nom)	180 °
Luminous Flux (Nom)	2000 lm
Color Designation	White (WH)
Correlated Color Temperature (Nom)	3500 K
Luminous Efficacy (rated) (Nom)	129.00 lm/W
Color Consistency	<6
Color Rendering Index (Nom)	82
LLMF At End Of Nominal Lifetime (Nom)	70 %
Operating and Electrical	
Input Frequency	50 to 60 Hz
Power (Nom)	15.5 W

Lamp Current (Max)	140 mA
Lamp Current (Min)	63 mA
Starting Time (Nom)	0.9 s
Warm Up Time to 60% Light (Nom)	0.9 s
UL Type	Type B - bypass the ballast
Power Factor (Nom)	0.9
Voltage (Nom)	120-277 V
Temperature	
T-Ambient (Max)	45 °C
T-Ambient (Min)	-20 °C
T-Storage (Max)	65 °C
T-Storage (Min)	-40 °C
T-Case Maximum (Nom)	51 °C
Controls and Dimming	
Dimmable	No

Mechanical and Housing

Product Length	600 mm
----------------	--------

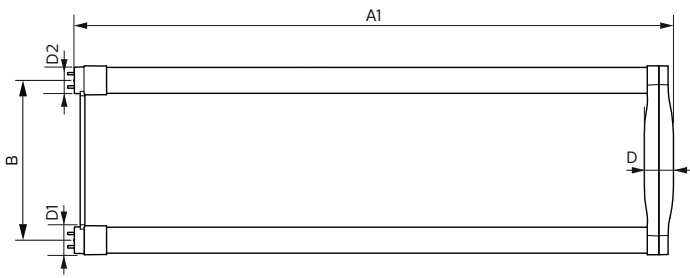
Approval and Application

Energy Efficiency Label (EEL)	Not applicable
Energy Saving Product	Yes
Approval Marks	UL certificate RoHS compliance DLC compliance
Energy Consumption kWh/1000 h	- kWh
Energy Certifications	DLC Standard

Product Data

Order product name	15.5T8-6U/COR/24-835/MF20/G 10/1
EAN/UPC - Product	046677535544
Order code	929001934704
Numerator - Quantity Per Pack	1
Numerator - Packs per outer box	10
Material Nr. (12NC)	929001934704
Net Weight (Piece)	0.230 kg

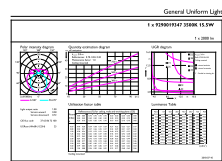
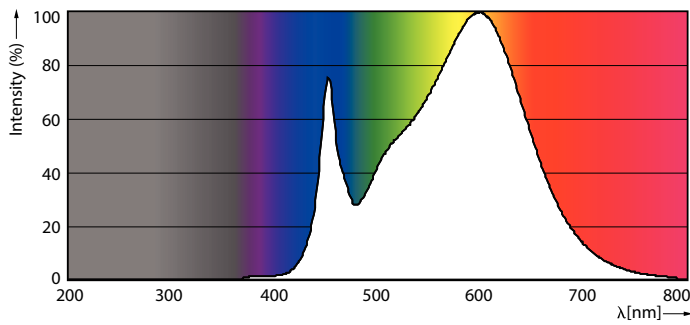
Dimensional drawing



Product	D1	D2	B	A1	D
15.5T8-6U/COR/24-835/MF20/G 10/1	25.7 mm	28.1 mm	152 mm	570 mm	27.9 mm

TLED MF CorePro U bent 2000lm 3500K

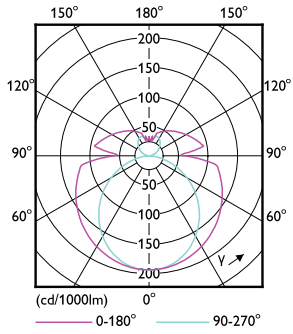
Photometric data



15-5W 2G13

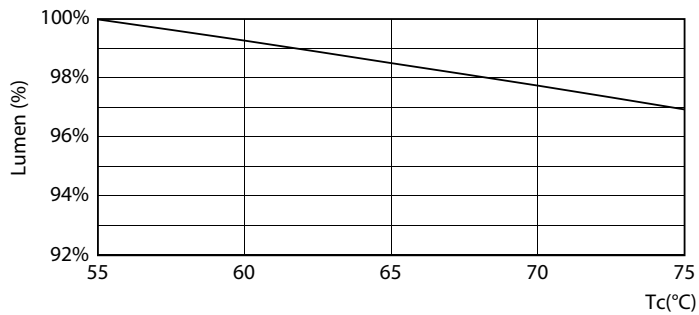
15-5W 2G13 835 3500K

Photometric data

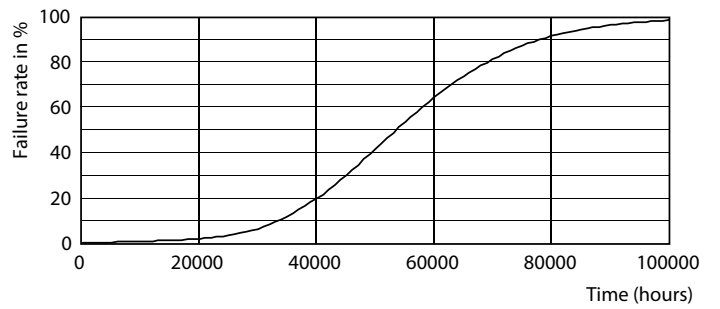


15-5W 2G13 830 3000K

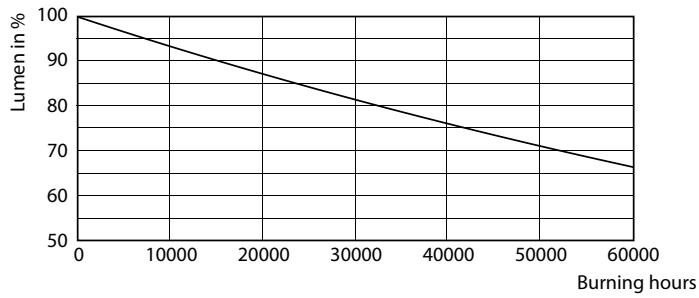
Lifetime



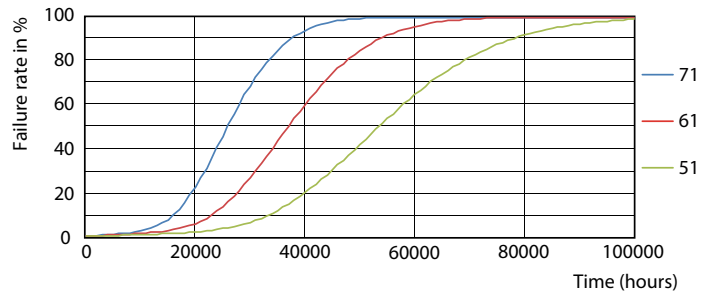
15-5W 2G13



8.5W G13



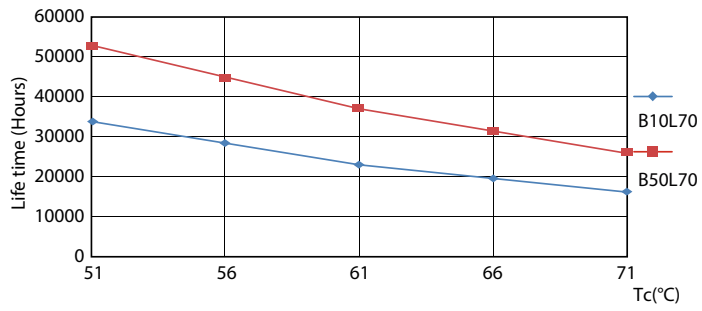
8.5W G13



15-5W 2G13

T8

Lifetime



15-5W 2G13

