



# MASTER LEDtube EM/ Mains T8

## MASTER LEDtube 1200mm UO 16W 865 T8 FF RCA

The Philips MASTER LEDtube integrates a LED light source into a traditional fluorescent form factor. Its unique design creates a perfectly uniform visual appearance which cannot be distinguished from traditional fluorescent. For those that are looking for value for money within limited budget and re-lamping efforts for better light effect and lifetime.

### Warnings and Safety

- NOTES: The overall energy efficiency and light distribution of any installation that uses these lamps are determined by the design of the installation.

### Product data

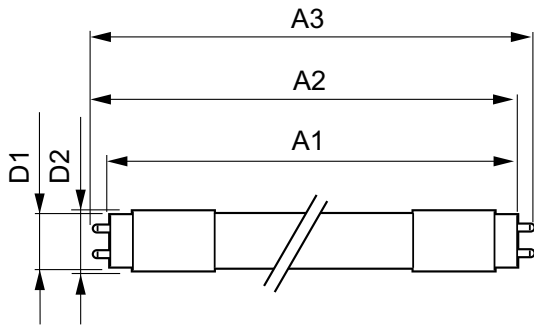
| General Information                |                                  | Color Rendering Index (Nom)                |             |
|------------------------------------|----------------------------------|--|-------------|
| Cap-Base                           | G13 [ Medium Bi-Pin Fluorescent] |  | 83          |
| EU RoHS compliant                  | Yes                              | LLMF At End Of Nominal Lifetime (Nom) 70 % |             |
| Nominal Lifetime (Nom)             | 50000 h                          | Operating and Electrical                   |             |
| Switching Cycle                    | 200000X                          | Input Frequency                            | 50 to 60 Hz |
| Light Technical                    |                                  | Power (Nom)                                | 16 W        |
| Color Code                         | 865 [ CCT of 6500K]              | Lamp Current (Max)                         | 75 mA       |
| Beam Angle (Nom)                   | 160 °                            | Lamp Current (Min)                         | 68 mA       |
| Luminous Flux (Nom)                | 2500 lm                          | Starting Time (Nom)                        | 0.5 s       |
| Color Designation                  | Cool Daylight                    | Warm Up Time to 60% Light (Nom)            | 0.5 s       |
| Correlated Color Temperature (Nom) | 6500 K                           | Power Factor (Nom)                         | 0.9         |
| Luminous Efficacy (rated) (Nom)    | 156.00 lm/W                      | Voltage (Nom)                              | 220-240 V   |
| Color Consistency                  | <6                               |  |             |

# MASTER LEDtube EM/Mains T8

| Temperature                   |         |
|-------------------------------|---------|
| T-Ambient (Max)               | 45 °C   |
| T-Ambient (Min)               | -20 °C  |
| T-Storage (Max)               | 65 °C   |
| T-Storage (Min)               | -40 °C  |
| T-Case Maximum (Nom)          | 55 °C   |
| Controls and Dimming          |         |
| Dimmable                      | No      |
| Mechanical and Housing        |         |
| Product Length                | 1200 mm |
| Approval and Application      |         |
| Energy Efficiency Label (EEL) | A++     |
| Energy Saving Product         | Yes     |

| Approval Marks                  | RoHS compliance TUV CE marking KEMA Keur certificate |
|---------------------------------|--|
| Energy Consumption kWh/1000 h   | 16 kWh   |
| Product Data                    |  |
| Full product code               | 871869681803900                                      |
| Order product name              | MASTER LEDtube 1200mm UO 16W 865 T8 FF RCA           |
| EAN/UPC - Product               | 8718696818039  |
| Order code                      | 929001908108   |
| Numerator - Quantity Per Pack   | 1  |
| Numerator - Packs per outer box | 10   |
| Material Nr. (12NC)             | 929001908108   |
| Net Weight (Piece)              | 0.215 kg   |

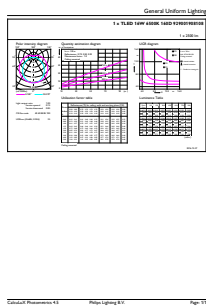
## Dimensional drawing



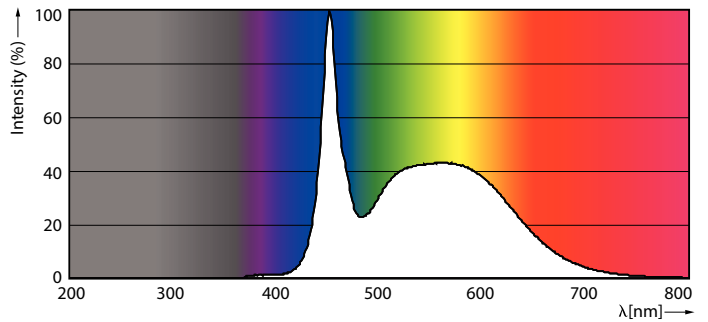
TLED Master UO 4ft low Flicker RCA 6500k

| Product                                    | D1      | D2    | A1        | A2        | A3        |
|--|---------|-------|-----------|-----------|-----------|
| MASTER LEDtube 1200mm UO 16W 865 T8 FF RCA | 25.8 mm | 28 mm | 1198.2 mm | 1205.3 mm | 1198.2 mm |

## Photometric data



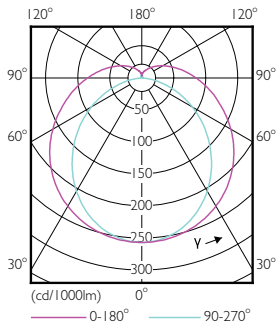
LEDtube G13 16W 6500K 160D



LEDtube G13 16W 6500K 160D

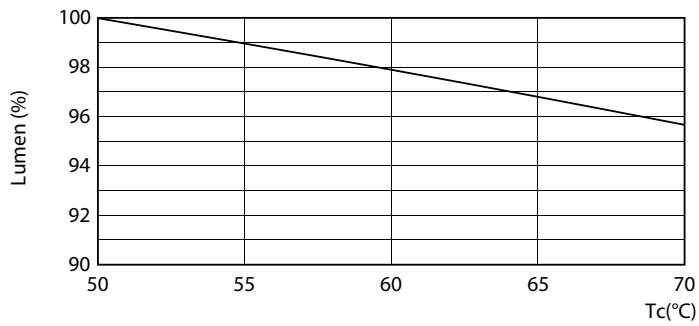
# MASTER LEDtube EM/Mains T8

## Photometric data

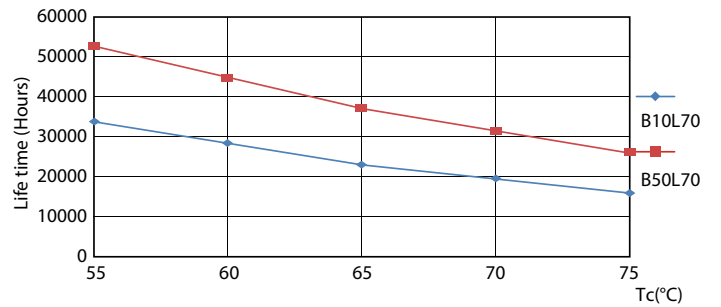


LEDtube G13 16W 3000K 160D

## Lifetime



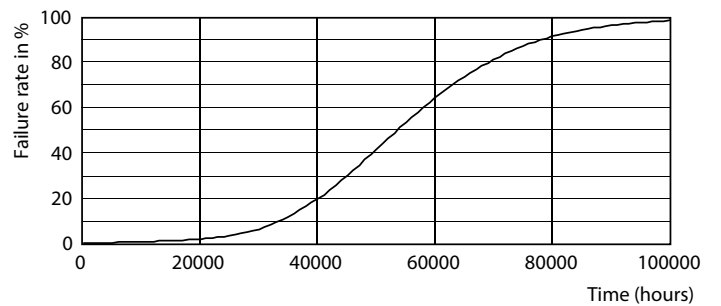
LEDtube G13 16W 3000K 160D LumenVsTc



LEDtube G13 16W 3000K 160D LifetimeVsTc



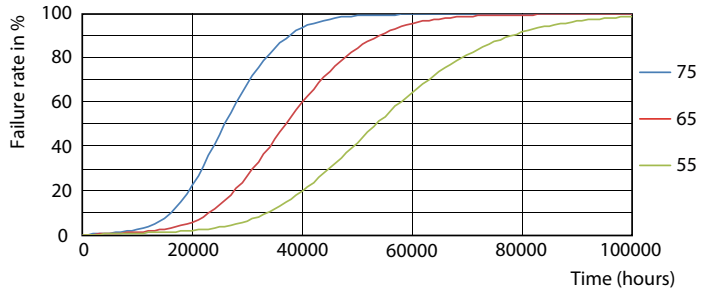
LEDtube G13 16W 3000K 160D



LEDtube G13 16W 3000K 160D

# MASTER LEDtube EM/Mains T8

## Lifetime



LEDtube G13 16W 3000K 160D FailureRate

