



# MASTER LEDtube EM/ Mains T8

## MASTER LEDtube 1200mm UO 16W 840 T8 FF RCA

The Philips MASTER LEDtube integrates a LED light source into a traditional fluorescent form factor. Its unique design creates a perfectly uniform visual appearance which cannot be distinguished from traditional fluorescent. For those that are looking for value for money within limited budget and re-lamping efforts for better light effect and lifetime.

### Warnings and Safety

· NOTES: The overall energy efficiency and light distribution of any installation that uses these lamps are determined by the design of the installation.

### Product data

General Information		Color Rendering Index (Nom)	
Cap-Base	G13 [ Medium Bi-Pin Fluorescent]		83
EU RoHS compliant	Yes	LLMF At End Of Nominal Lifetime (Nom) 70 %	
Nominal Lifetime (Nom)	50000 h	Operating and Electrical	
Switching Cycle	200000X	Input Frequency	50 to 60 Hz
Light Technical		Power (Nom)	16 W
Color Code	840 [ CCT of 4000K]	Lamp Current (Max)	75 mA
Beam Angle (Nom)	160 °	Lamp Current (Min)	68 mA
Luminous Flux (Nom)	2500 lm	Starting Time (Nom)	0.5 s
Color Designation	Cool White (CW)	Warm Up Time to 60% Light (Nom)	0.5 s
Correlated Color Temperature (Nom)	4000 K	Power Factor (Nom)	0.9
Luminous Efficacy (rated) (Nom)	156.00 lm/W	Voltage (Nom)	220-240 V
Color Consistency	<6		

# MASTER LEDtube EM/Mains T8

## Temperature

T-Ambient (Max)	45 °C
T-Ambient (Min)	-20 °C
T-Storage (Max)	65 °C
T-Storage (Min)	-40 °C
T-Case Maximum (Nom)	55 °C

## Controls and Dimming

Dimmable	No
----------	----

## Mechanical and Housing

Product Length	1200 mm
----------------	---------

## Approval and Application

Energy Efficiency Label (EEL)	A++
Energy Saving Product	Yes

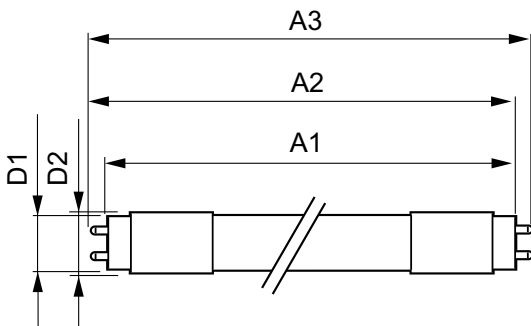
Approval Marks	RoHS compliance TUV CE marking KEMA Keur certificate
----------------	--

Energy Consumption kWh/1000 h	16 kWh
-------------------------------	--------

## Product Data

Full product code	871869681801500
Order product name	MASTER LEDtube 1200mm UO 16W 840 T8 FF RCA
EAN/UPC - Product	8718696818015
Order code	929001908008
Numerator - Quantity Per Pack	1
Numerator - Packs per outer box	10
Material Nr. (12NC)	929001908008
Net Weight (Piece)	0.215 kg

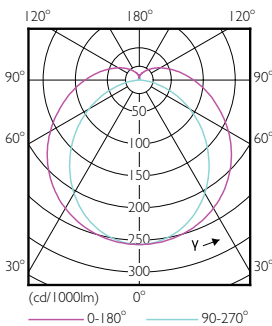
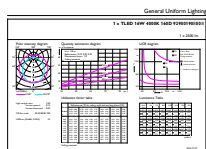
## Dimensional drawing



TLED Master UO 4ft low Flicker RCA 4000k

Product	D1	D2	A1	A2	A3
MASTER LEDtube 1200mm UO 16W 840 T8 FF RCA	25.8 mm	28 mm	1198.2 mm	1205.3 mm	1198.2 mm

## Photometric data

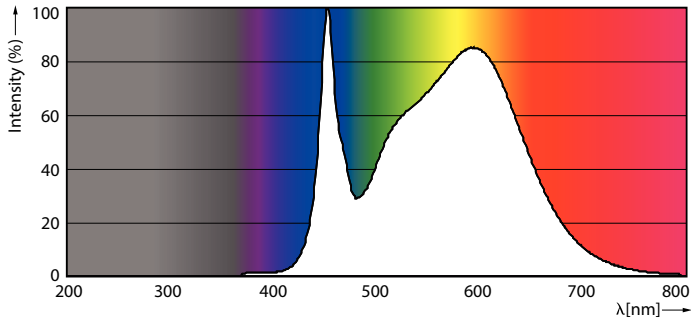


LEDtube G13 16W 4000K 160D

LEDtube G13 16W 3000K 160D

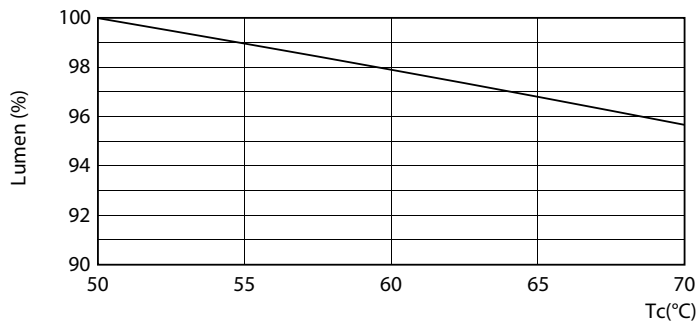
# MASTER LEDtube EM/Mains T8

## Photometric data

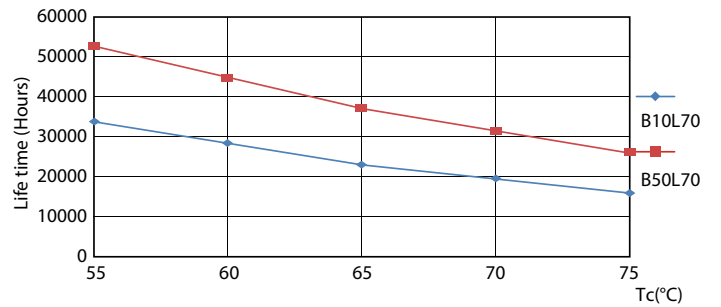


LEDtube G13 16W 4000K 160D

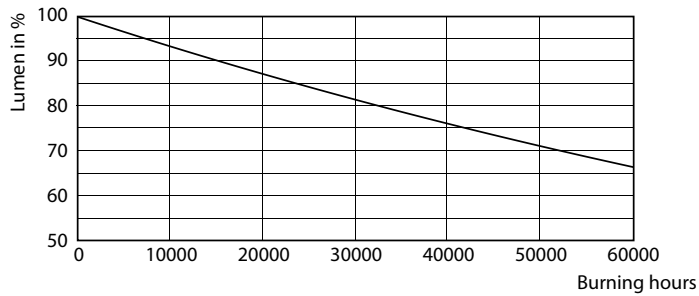
## Lifetime



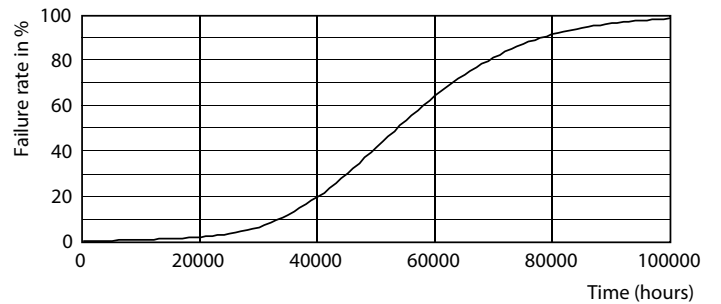
LEDtube G13 16W 3000K 160D LumenVsTc



LEDtube G13 16W 3000K 160D LifetimeVsTc



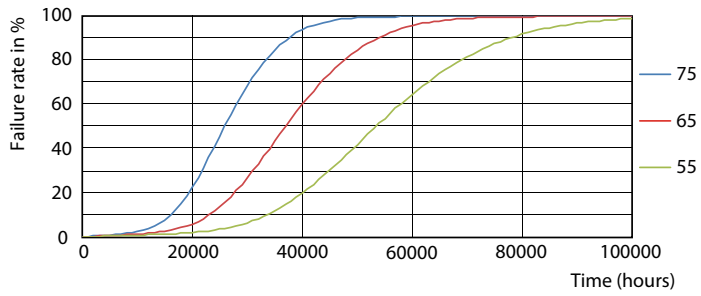
LEDtube G13 16W 3000K 160D



LEDtube G13 16W 3000K 160D

# MASTER LEDtube EM/Mains T8

## Lifetime



LEDtube G13 16W 3000K 160D FailureRate

