

MASTER LEDtube EM/ Mains T8

MASTER LEDtube Sensor 1200mm HO 16.5W840 T8

The Philips MASTER LEDtube integrates a LED light source into a traditional fluorescent form factor. Its unique design creates a perfectly uniform visual appearance which cannot be distinguished from traditional fluorescent. For those that are looking for value for money within limited budget and re-lamping efforts for better light effect and lifetime.

Warnings and Safety

• NOTES: The overall energy efficiency and light distribution of any installation that uses these lamps are determined by the design of the installation.

Product data

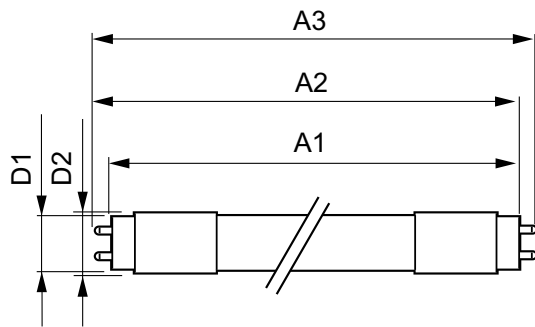
General Information		Color Rendering Index (Nom)		83
Cap-Base	G13 [Medium Bi-Pin Fluorescent]	LLMF At End Of Nominal Lifetime (Nom)		70 %
EU RoHS compliant	Yes	Operating and Electrical		
Nominal Lifetime (Nom)	50000 h	Input Frequency	50 to 60 Hz	
Switching Cycle	200000X	Power (Nom)	16.5 W	
Light Technical		Lamp Current (Max)	85 mA	
Color Code	840 [CCT of 4000K]	Lamp Current (Min)	65 mA	
Beam Angle (Nom)	240 °	Starting Time (Nom)	0.5 s	
Luminous Flux (Nom)	2100 lm	Warm Up Time to 60% Light (Nom)	0.5 s	
Color Designation	Cool White (CW)	Power Factor (Nom)	0.9	
Correlated Color Temperature (Nom)	4000 K	Voltage (Nom)	220-240 V	
Luminous Efficacy (rated) (Nom)	127.00 lm/W			
Color Consistency	<6			

MASTER LEDtube EM/Mains T8

Temperature	
T-Ambient (Max)	45 °C
T-Ambient (Min)	-20 °C
T-Storage (Max)	65 °C
T-Storage (Min)	-40 °C
T-Case Maximum (Nom)	55 °C
Controls and Dimming	
Dimmable	Yes
Mechanical and Housing	
Bulb Material	Glass
Product Length	1200 mm
Approval and Application	
Energy Efficiency Label (EEL)	A++
Energy Saving Product	Yes

Approval Marks	CE marking RoHS compliance KEMA Keur certificate
Energy Consumption kWh/1000 h	17 kWh
Product Data	
Full product code	871869680602900
Order product name	MASTER LEDtube Sensor 1200mm HO 16.5W840 T8
EAN/UPC - Product	8718696806029
Order code	929001878502
Numerator - Quantity Per Pack	1
Numerator - Packs per outer box	10
Material Nr. (12NC)	929001878502
Net Weight (Piece)	0.215 kg

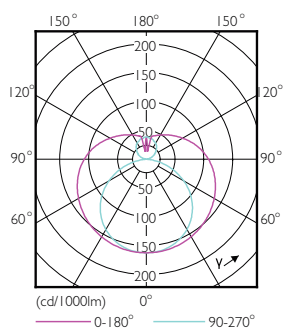
Dimensional drawing



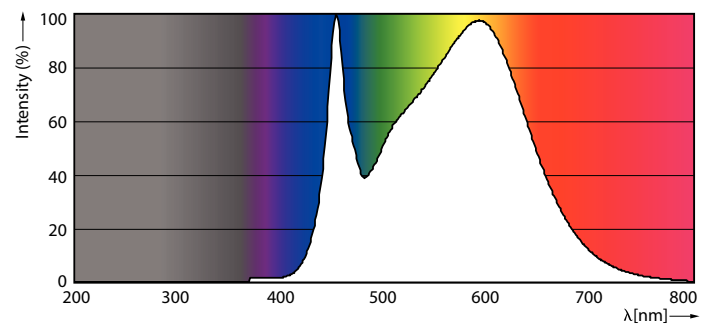
TLED 1200mm 16.5-36W 2100lm 4000K G13 D

Product	D1	D2	A1	A2	A3
MASTER LEDtube Sensor 1200mm HO 16.5W840 T8	25.8 mm	28 mm	1199.4 mm	1206.5 mm	1213.6 mm

Photometric data



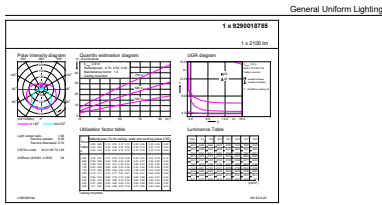
16-5W G13 840 4000K



16-5W G13

MASTER LEDtube EM/Mains T8

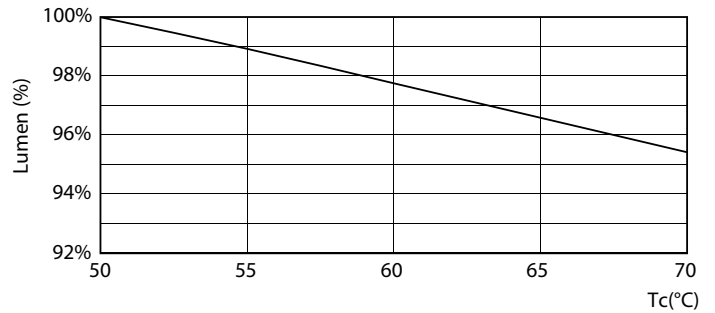
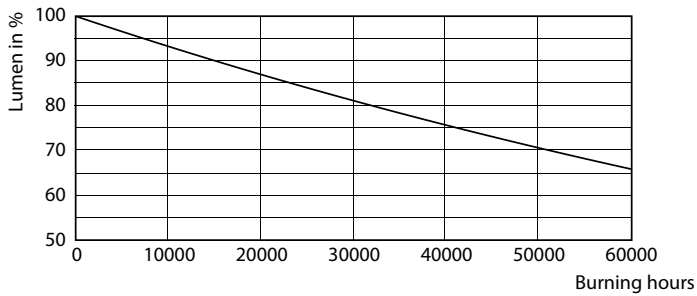
Photometric data



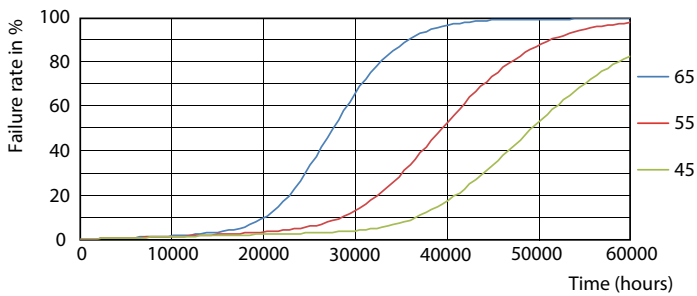
Kalux Photometric 4.5 Philips Lighting B.V. Page 1/1

16-5W G13 840 4000K

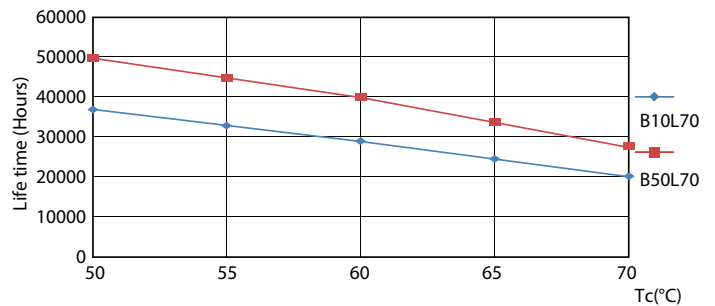
Lifetime



16-5W G13



16-5W G13

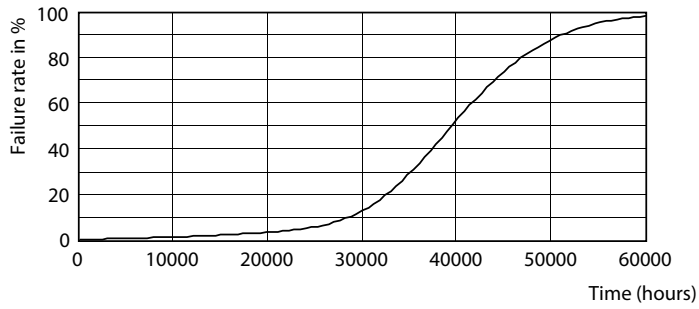


16-5W G13

16-5W G13

MASTER LEDtube EM/Mains T8

Lifetime



16-5W G13

