

MasterConnect LEDtube EM/Mains T8

MASTERConnect LEDtube IA 1200mm UO 16.5W840 T8

Philips MasterConnect LEDtube EM/Mains T8 means easy upgrade to a connected lighting system. Its 2.4GHz mesh networking technology enables wireless integration with a variety of control devices, such as sensor and switch. The result? Even more energy saving and enhanced flexibility in your space. Through dimming, occupancy sensing and/or daylight harvesting, lamps deliver 50% or more energy saving thanks to MasterConnect technology.

Product data

General Information	
Cap-Base	G13 [Medium Bi-Pin Fluorescent]
EU RoHS compliant	Yes
Nominal Lifetime (Nom)	50000 h
Switching Cycle	200000X
Light Technical	
Color Code	840 [CCT of 4000K]
Beam Angle (Nom)	160 °
Luminous Flux (Nom)	2500 lm
Color Designation	Cool White (CW)
Correlated Color Temperature (Nom)	4000 K
Luminous Efficacy (rated) (Nom)	151.52 lm/W
Color Consistency	<6
Color Rendering Index (Nom)	83
LLMF At End Of Nominal Lifetime (Nom)	70 %

Operating and Electrical	
Input Frequency	50 to 60 Hz
Power (Nom)	16.5 W
Lamp Current (Max)	76 mA
Lamp Current (Min)	69 mA
Starting Time (Nom)	0.5 s
Warm Up Time to 60% Light (Nom)	0.5 s
Power Factor (Nom)	0.9
Voltage (Nom)	220-240 V
Temperature	
T-Ambient (Max)	45 °C
T-Ambient (Min)	-20 °C
T-Storage (Max)	65 °C
T-Storage (Min)	-40 °C
T-Case Maximum (Nom)	45 °C

MasterConnect LEDtube EM/Mains T8

Controls and Dimming

Dimmable Wireless Dim

Mechanical and Housing

Product Length 1200 mm

Approval and Application

Energy Efficiency Label (EEL) A++

Energy Saving Product Yes

Approval Marks TUV CE marking RoHS compliance KEMA Keur certificate

Energy Consumption kWh/1000 h 17 kWh

Product Data

Full product code 871869677344400

Order product name MASTERConnect LEDtube IA 1200mm UO 16.5W840 T8

EAN/UPC - Product 8718696773444

Order code 929001813802

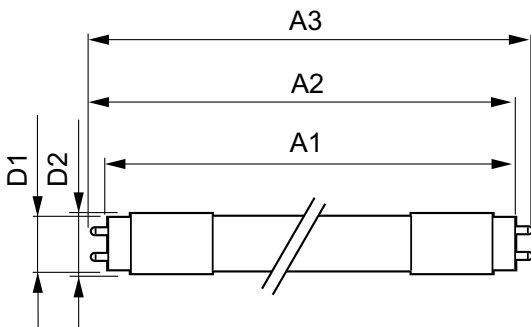
Numerator - Quantity Per Pack 1

Numerator - Packs per outer box 10

Material Nr. (12NC) 929001813802

Net Weight (Piece) 0.251 kg

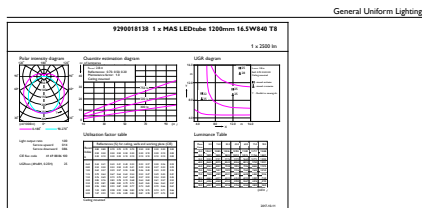
Dimensional drawing



TLED 1200mm 16.5W 2500lm 4000K G13 D

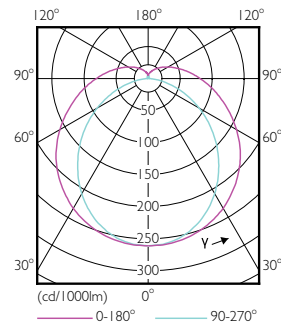
Product	D1	D2	A1	A2	A3
MASTERConnect LEDtube	25.7	28 mm	1199.4	1205.3	1212.4
IA 1200mm UO 16.5W840 T8	mm		mm	mm	mm

Photometric data



CadaluX Proometrics 4.5 Philips Lighting B.V. Page 1/7

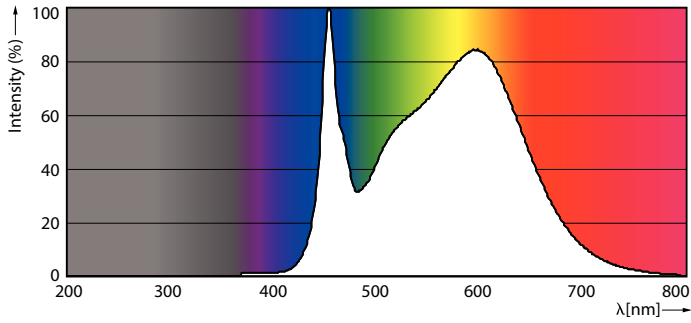
16-5W G13 840 4000K



16-5W G13 830 3000K

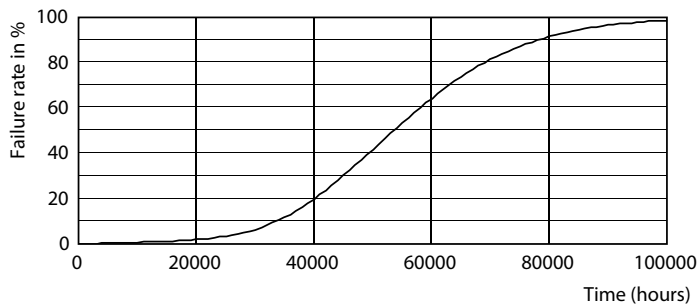
MasterConnect LEDtube EM/Mains T8

Photometric data

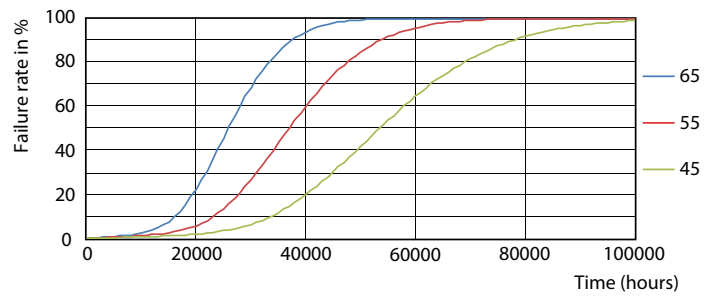


16-5W G13

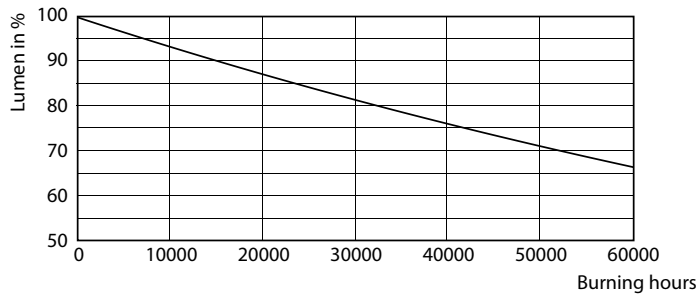
Lifetime



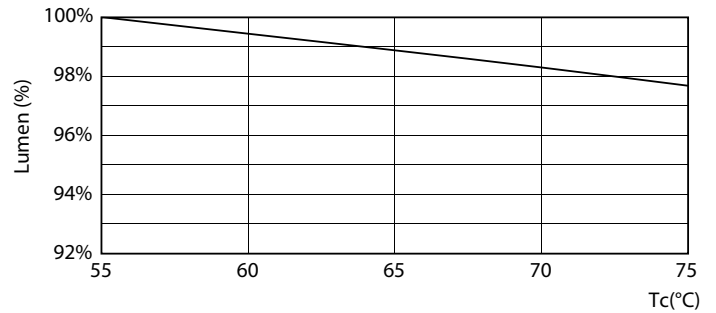
16-5W G13



16-5W G13



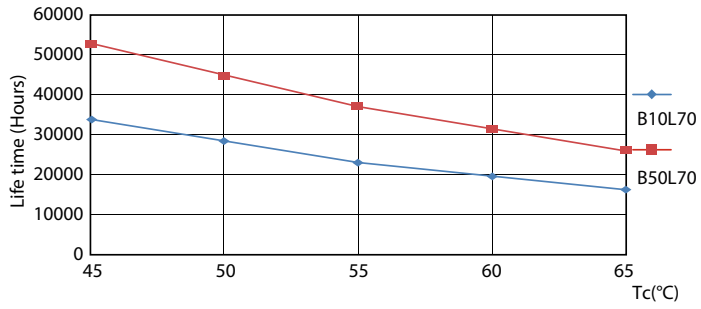
16-5W G13



16-5W G13

MasterConnect LEDtube EM/Mains T8

Lifetime



16-5W G13

