



MasterConnect T8

8T8/24-850/IF12/MAScon IA 10/1

Philips MasterConnect LEDtube InstantFit T8, which is Interact Ready, enables an easy upgrade to a connected lighting system without re-wiring the fixtures. The 2.4GHz mesh networking technology allows wireless integration with a variety of control devices, such as sensor and switch, for easy light automation. It also offers secure and reliable communication towards the Interact IoT platform or verified third party systems. The result? Greater energy savings, various control possibilities and a more adaptable space!

Product data

General Information	
Cap-Base	G13 [Medium Bi-Pin Fluorescent]
EU RoHS compliant	Yes
Nominal Lifetime (Nom)	50000 h
Switching Cycle	50000X
Light Technical	
Color Code	850 [CCT of 5000K]
Beam Angle (Nom)	160 °
Luminous Flux (Nom)	1200 lm
Color Designation	Daylight
Correlated Color Temperature (Nom)	5000 K
Luminous Efficacy (rated) (Nom)	150.00 lm/W
Color Consistency	<6
Color Rendering Index (Nom)	80
LLMF At End Of Nominal Lifetime (Nom)	70 %
Operating and Electrical	
Input Frequency	40000-85000 Hz
Power (Nom)	8 W

Lamp Current (Max)	280 mA
Lamp Current (Min)	70 mA
Starting Time (Nom)	0.5 s
Warm Up Time to 60% Light (Nom)	0.5 s
Power Factor (Nom)	0.9
Voltage (Nom)	200-380 V
Temperature	
T-Ambient (Max)	45 °C
T-Ambient (Min)	-20 °C
T-Storage (Max)	65 °C
T-Storage (Min)	-40 °C
T-Case Maximum (Nom)	35 °C
Controls and Dimming	
Dimmable	Wireless Dim
Mechanical and Housing	
Product Length	600 mm

MasterConnect T8

Approval and Application

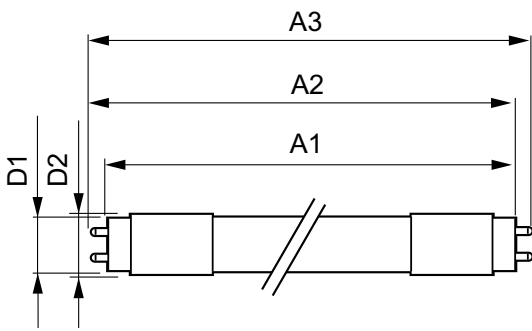
Energy Efficiency Label (EEL)	Not applicable
Energy Saving Product	Yes
Approval Marks	UL certificate RoHS compliance DLC compliance
Energy Consumption kWh/1000 h	- kWh
Energy Certifications	DLC Standard

Product Data

Order product name	8T8/24-850/IF12/MAScon IA 10/1
--------------------	--------------------------------

EAN/UPC - Product	046677537289
Order code	929001398764
Numerator - Quantity Per Pack	1
Numerator - Packs per outer box	10
Material Nr. (12NC)	929001398764
Net Weight (Piece)	0.080 kg

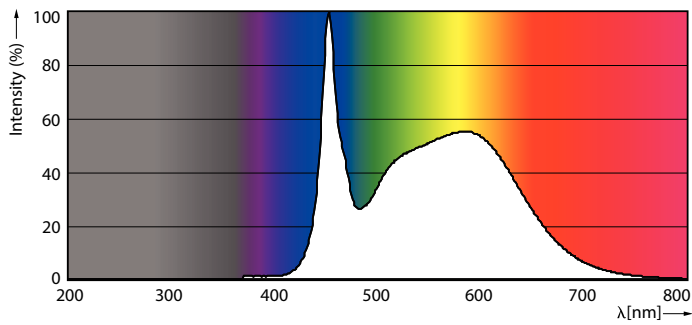
Dimensional drawing



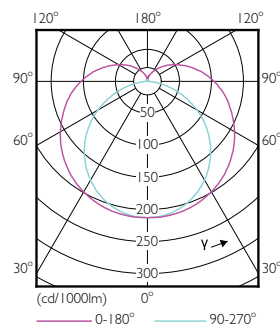
TLED SMART 2ft HF 8-18W 1050lm 5000K

Product	D1	D2	A1	A2	A3
8T8/24-850/IF12/MAScon IA 10/1	25.6 mm	27.8 mm	588.6 mm	595.7 mm	602.8 mm

Photometric data

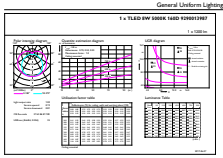


LEDtube 8W G13 850 160D IF EasySmart



LEDtube 8W G13 830 160D IF EasySmart

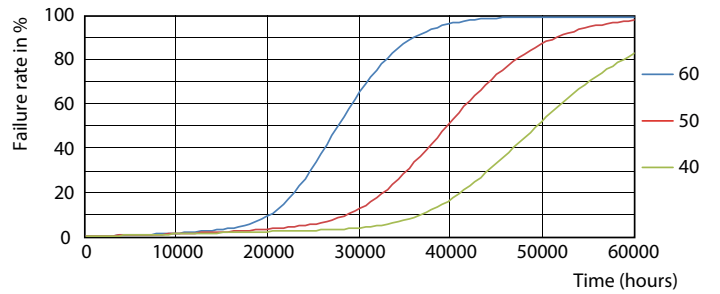
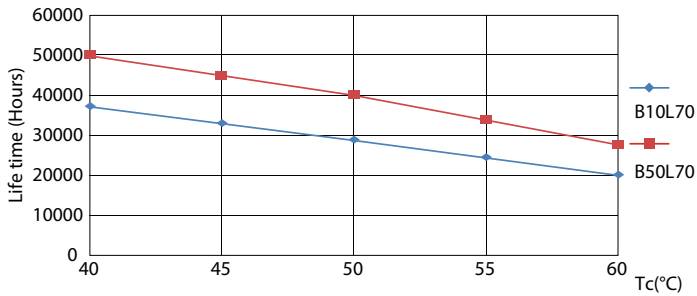
Photometric data



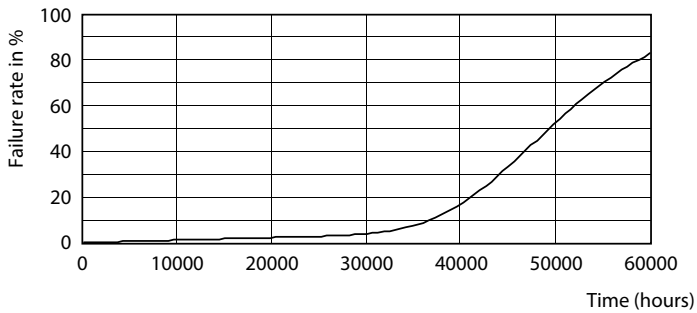
General Information 01 Page Lighting 01 Page 11

LEDtube 8W G13 850 160D IF EasySmart

Lifetime

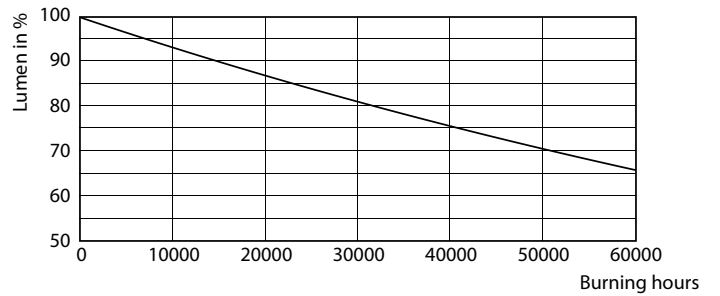


LEDtube 15W G13 830-850 160D IF 6U EasySmart



LEDtube 15W G13 830-850 160D IF 6U EasySmart

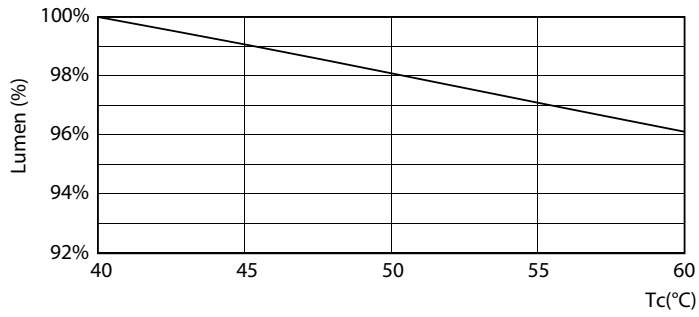
LEDtube 15W G13 830-850 160D IF 6U EasySmart



LEDtube 15W G13 830-850 160D IF 6U EasySmart

MasterConnect T8

Lifetime



LEDtube 15W G13 830-850 160D IF 6U EasySmart

