

MasterConnect

15T8/24-850/IF21-6U/MAScon IA 10/1

Philips MasterConnect LEDtube InstantFit T8, which is Interact Ready, enables an easy upgrade to a connected lighting system without re-wiring the fixtures. The 2.4GHz mesh networking technology allows wireless integration with a variety of control devices, such as sensor and switch, for easy light automation. It also offers secure and reliable communication towards the Interact IoT platform or verified third party systems. The result? Greater energy savings, various control possibilities and a more adaptable space!

Product data

| General Information | |
|---------------------------------------|----------------------------------|
| Cap-Base | G13 [Medium Bi-Pin Fluorescent] |
| EU RoHS compliant | Yes |
| Nominal Lifetime (Nom) | 50000 h |
| Switching Cycle | 50000X |
| Light Technical | |
| Color Code | 850 [CCT of 5000K] |
| Beam Angle (Nom) | 160 ° |
| Luminous Flux (Nom) | 2100 lm |
| Color Designation | Daylight |
| Correlated Color Temperature (Nom) | 5000 K |
| Luminous Efficacy (rated) (Nom) | 140.00 lm/W |
| Color Consistency | <6 |
| Color Rendering Index (Nom) | 80 |
| LLMF At End Of Nominal Lifetime (Nom) | 70 % |
| Operating and Electrical | |
| Input Frequency | 40000-80000 Hz |
| Power (Nom) | 15 W |

| Lamp Current (Max) | 350 mA |
|---------------------------------|--------------|
| Lamp Current (Min) | 120 mA |
| Starting Time (Nom) | 0.5 s |
| Warm Up Time to 60% Light (Nom) | 0.5 s |
| Power Factor (Nom) | 0.9 |
| Voltage (Nom) | 160-380 V |
| Temperature | |
| T-Ambient (Max) | 45 °C |
| T-Ambient (Min) | -20 °C |
| T-Storage (Max) | 65 °C |
| T-Storage (Min) | -40 °C |
| T-Case Maximum (Nom) | 40 °C |
| Controls and Dimming | |
| Dimmable | Wireless Dim |
| Mechanical and Housing | |
| Product Length | 600 mm |

Approval and Application

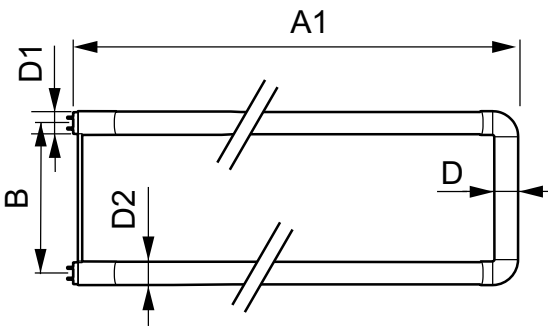
| | |
|-------------------------------|---|
| Energy Efficiency Label (EEL) | Not applicable |
| Energy Saving Product | Yes |
| Approval Marks | UL certificate RoHS compliance DLC compliance |
| Energy Consumption kWh/1000 h | - kWh |
| Energy Certifications | DLC Standard |

Product Data

| | |
|--------------------|------------------------------------|
| Order product name | 15T8/24-850/IF21-6U/MAScon IA 10/1 |
|--------------------|------------------------------------|

| | |
|---------------------------------|--------------|
| EAN/UPC - Product | 046677537241 |
| Order code | 929001398364 |
| Numerator - Quantity Per Pack | 1 |
| Numerator - Packs per outer box | 10 |
| Material Nr. (12NC) | 929001398364 |
| Net Weight (Piece) | 0.270 kg |

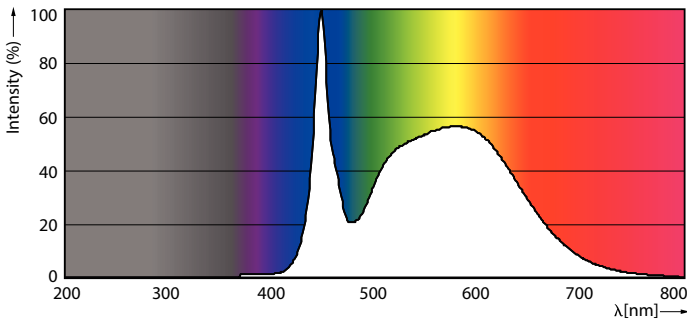
Dimensional drawing



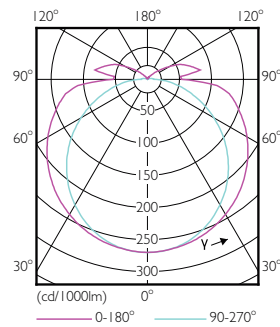
TLED SMART 4ft HF 14-32W 2100lm 5000K

| Product | D1 | D2 | B | A1 | D |
|------------------------------------|---------|---------|--------|--------|---------|
| 15T8/24-850/IF21-6U/MAScon IA 10/1 | 25.4 mm | 27.8 mm | 152 mm | 570 mm | 27.8 mm |

Photometric data

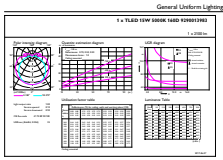


LEDtube 15W G13 850 160D IF 6U EasySmart



LEDtube 15W G13 830 160D IF 6U EasySmart

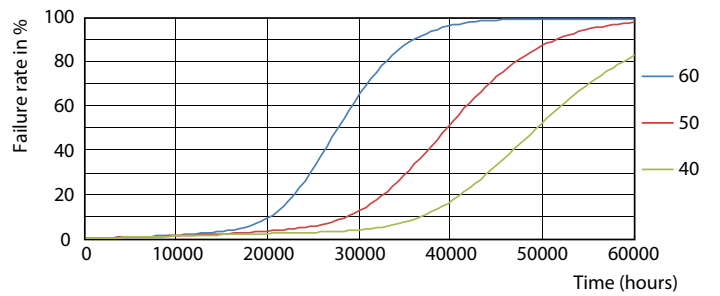
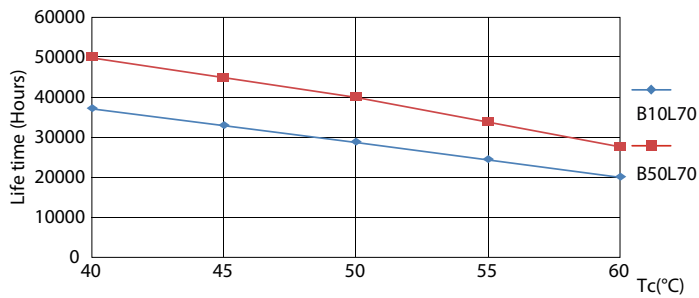
Photometric data



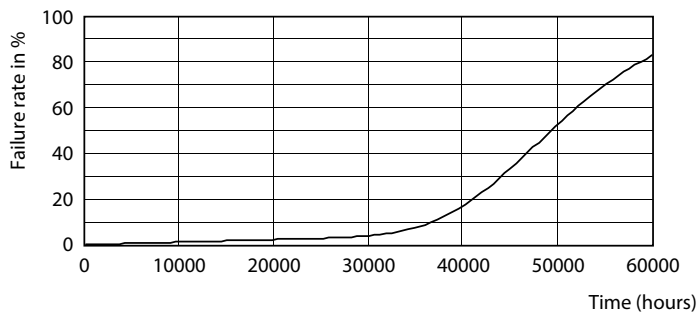
General Photometric Data Page Lighting 01 Page 11

LEDtube 15W G13 850 160D IF 6U EasySmart

Lifetime

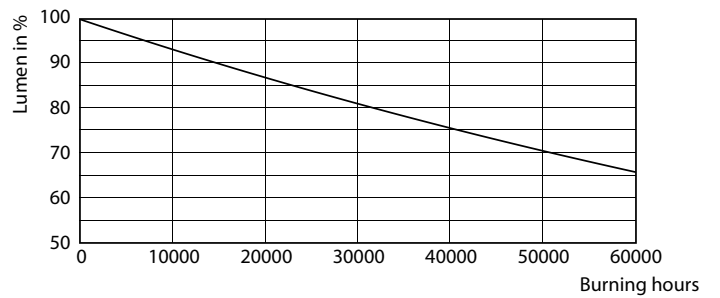


LEDtube 15W G13 830-850 160D IF 6U EasySmart



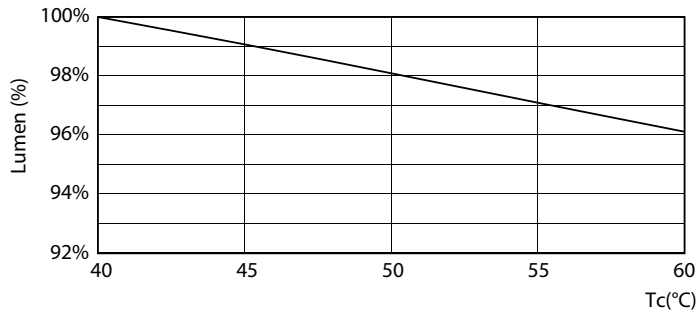
LEDtube 15W G13 830-850 160D IF 6U EasySmart

LEDtube 15W G13 830-850 160D IF 6U EasySmart



LEDtube 15W G13 830-850 160D IF 6U EasySmart

Lifetime



LEDtube 15W G13 830-850 160D IF 6U EasySmart

