

MASTER LEDtube InstantFit HF T8

MASTER LEDtube HF 600mm HO 8W865 T8

Philips MASTER LEDtube InstantFit T8 integrates a LED light source into a traditional fluorescent form factor. Its unique design creates a perfectly uniform visual appearance which cannot be distinguished from traditional fluorescent. Philips MASTER LEDtube InstantFit T8 is the ideal solution for customers who have higher light requirements and want to maximize value over lifetime.; Full energy savings & longer lifetime result in attractive payback times and TCO benefits.

Warnings and Safety

- NOTES: The overall energy efficiency and light distribution of any installation that uses these lamps are determined by the design of the installation.

Product data

General Information	
Cap-Base	G13 ROT (Rotating) [Medium Bi-Pin Fluorescent]
EU RoHS compliant	Yes
Nominal Lifetime (Nom)	60000 h
Switching Cycle	50000X
Light Technical	
Color Code	865 [CCT of 6500K]
Beam Angle (Nom)	160 °
Luminous Flux (Nom)	1050 lm
Color Designation	Cool Daylight
Correlated Color Temperature (Nom)	6500 K
Luminous Efficacy (rated) (Nom)	131.00 lm/W
Color Consistency	<6

Color Rendering Index (Nom)	83
LLMF At End Of Nominal Lifetime (Nom)	70 %
Operating and Electrical	
Input Frequency	20000-80000 Hz
Power (Nom)	8 W
Lamp Current (Max)	500 mA
Lamp Current (Min)	150 mA
Starting Time (Nom)	0.5 s
Warm Up Time to 60% Light (Nom)	0.5 s
Power Factor (Nom)	0.9
Voltage (Nom)	20-50 V
Temperature	
T-Ambient (Max)	45 °C

MASTER LEDtube InstantFit HF T8

T-Ambient (Min)	-20 °C
T-Storage (Max)	65 °C
T-Storage (Min)	-40 °C
T-Case Maximum (Nom)	60 °C

Controls and Dimming

Dimmable	No
----------	----

Mechanical and Housing

Bulb Material	Plastic
Product Length	600 mm

Approval and Application

Energy Efficiency Label (EEL)	A+
Energy Saving Product	Yes

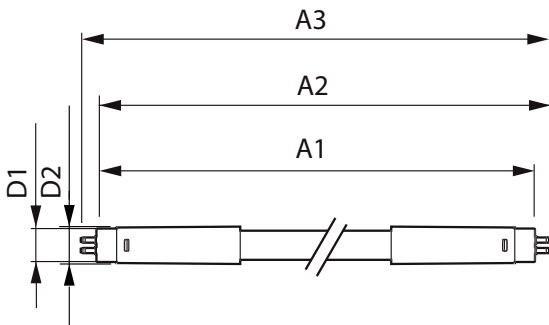
Approval Marks	RoHS compliance TUV CE marking KEMA Keur certificate
----------------	--

Energy Consumption kWh/1000 h	10 kWh
-------------------------------	--------

Product Data

Full product code	871869674367600
Order product name	MASTER LEDtube HF 600mm HO 8W865 T8
EAN/UPC - Product	8718696743676
Order code	929001393302
Numerator - Quantity Per Pack	1
Numerator - Packs per outer box	10
Material Nr. (12NC)	929001393302
Net Weight (Piece)	0.160 kg

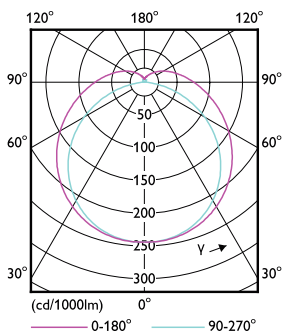
Dimensional drawing



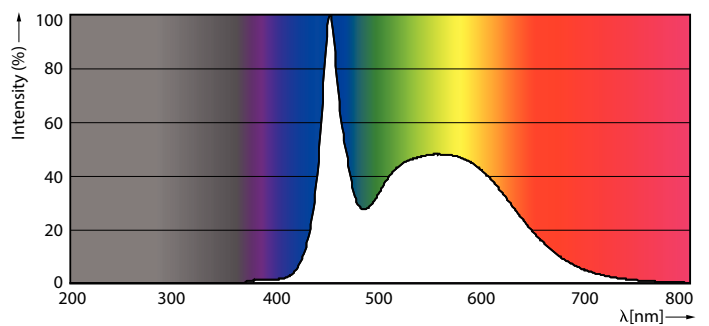
MAS LEDtube HF 600mm 10.5W865 T8

Product	D1	D2	A1	A2	A3
MASTER LEDtube HF 600mm HO 8W865 T8	25.6 mm	28 mm	588.6 mm	595.7 mm	602.8 mm

Photometric data



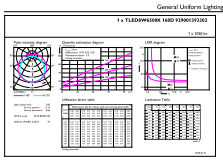
8W G13 830 3000K



8W G13

MASTER LEDtube InstantFit HF T8

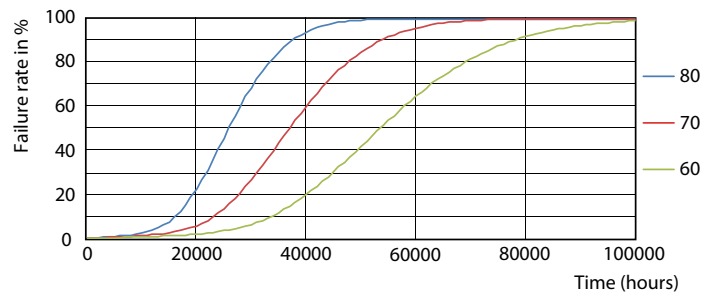
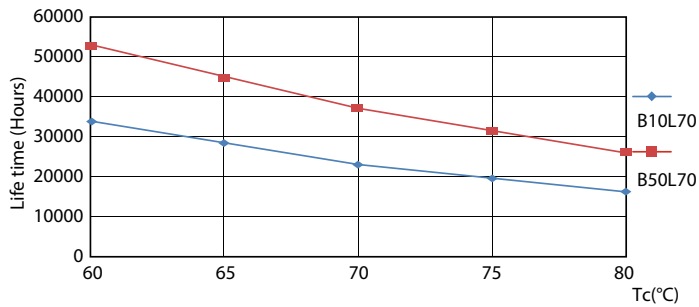
Photometric data



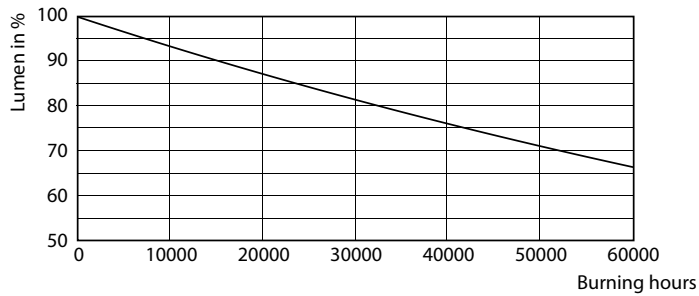
© 2020 Philips Lighting B.V. Page 11 of 11

8W G13 865 6500K

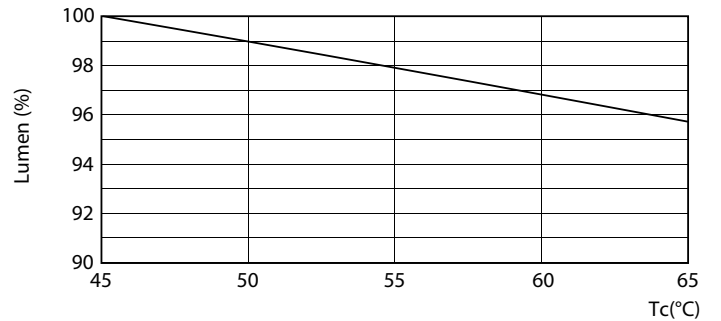
Lifetime



8W G13



8W G13

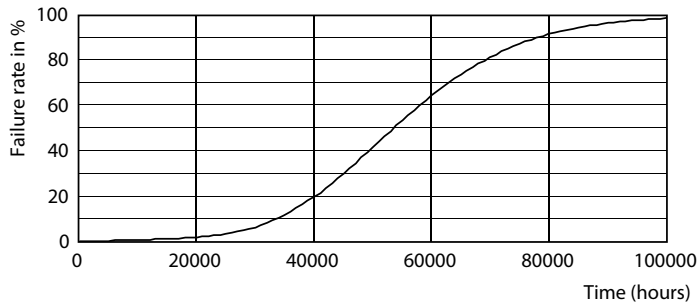


8W G13

8W G13

MASTER LEDtube InstantFit HF T8

Lifetime



8W G13

