



# MASTER LEDtube InstantFit HF T5

## Master LEDtube HF 1500mm HE 20W 840 T5

Philips MASTER LEDtube InstantFit T5 integrates a LED light source into a traditional fluorescent form factor. Its unique design creates a perfectly uniform visual appearance which cannot be distinguished from traditional fluorescents. The Philips MASTER LEDtube InstantFit T5 is the ideal solution for customers who have higher light output requirements and want to maximise value over the lifetime. The full energy savings & longer lifetime result in attractive payback times and TCO benefits.

### Product data

#### General Information

Cap base	G5 [ G5]
EU RoHS compliant	Yes
Nominal lifetime (nom.)	50000 h
Switching cycle	50,000X

#### Light Technical

Colour Code	840 [ CCT of 4,000 K]
Beam Angle (Nom)	200 °
Luminous flux (nom.)	3000 lm
Colour designation	Cool White (CW)
Correlated Colour Temperature (Nom)	4000 K
Luminous efficacy (rated) (nom.)	150.00 lm/W
Colour consistency	<6
Colour rendering index (nom.)	83
LLMF at end of nominal lifetime (nom.)	70 %

#### Operating and Electrical

Input frequency	35000-70000 Hz
-----------------	----------------

Power (Rated) (Nom)	20 W
Lamp current (max.)	350 mA
Lamp current (min.)	150 mA
Starting time (nom.)	0.5 s
Warm-up time to 60% light (nom.)	0.5 s
Power factor (nom.)	0.9
Voltage (Nom)	120-160 V

#### Temperature

T-ambient (max.)	45 °C
T-ambient (min.)	-20 °C
T storage (max.)	65 °C
T storage (min.)	-40 °C
T-Case maximum (nom.)	65 °C

#### Controls and Dimming

Dimmable	No
----------	----

# MASTER LEDtube InstantFit HF T5

## Mechanical and Housing

Bulb material	Glass
Product length	1500 mm

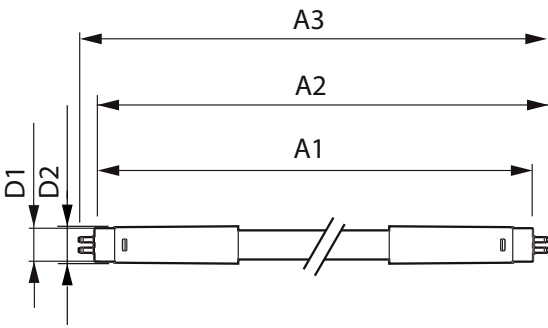
## Approval and Application

Energy efficiency label (EEL)	A++
Energy-saving product	Yes
Approval marks	CE marking RoHS compliance KEMA Keur certificate
Energy consumption kWh/1,000 hours	24 kWh

## Product Data

Full product code	871869674337900
Order product name	Master LEDtube HF 1500mm HE 20W 840 T5
EAN/UPC – product	8718696743379
Order code	74337900
Numerator – quantity per pack	1
SAP numerator – packs per outer box	10
Material no. (12 NC)	929001391402
SAP net weight (piece)	0.196 kg

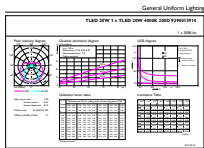
## Dimensional drawing



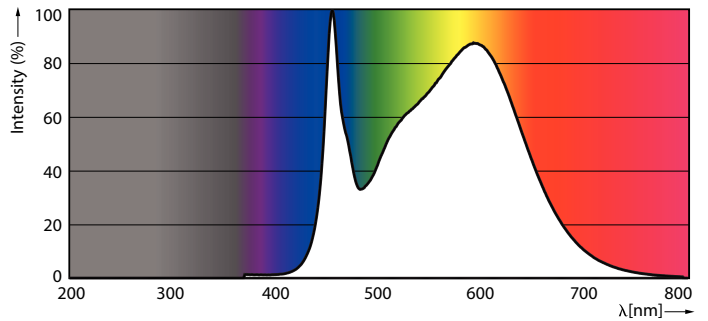
TLED 1500mm 230V17W-35W 2600lm 160D 400

Product	D1	D2	A1	A2	A3
Master LEDtube HF 1500mm HE 20W 840 T5	15.5 mm	18.8 mm	1449 mm	1456.1 mm	1463.2 mm

## Photometric data



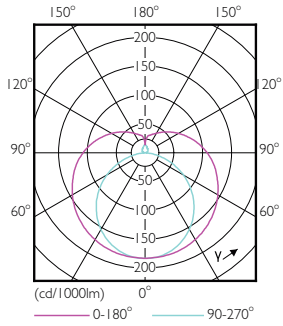
LEDtube 1500mm 20W G5 840 3000lm



LEDtube 1500mm 20W G5 840 3000lm

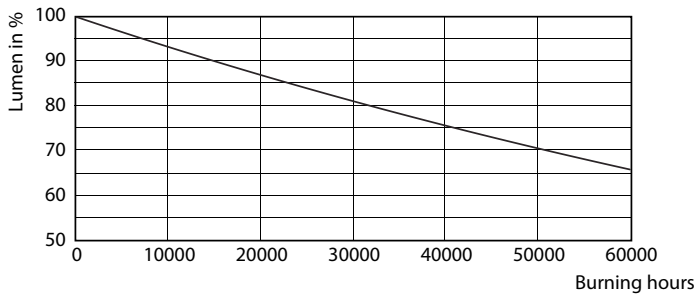
# MASTER LEDtube InstantFit HF T5

## Photometric data

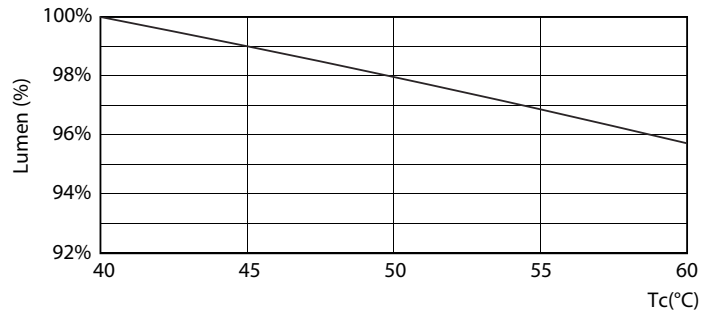


LEDtube 600mm 8W G5 830 1000lm

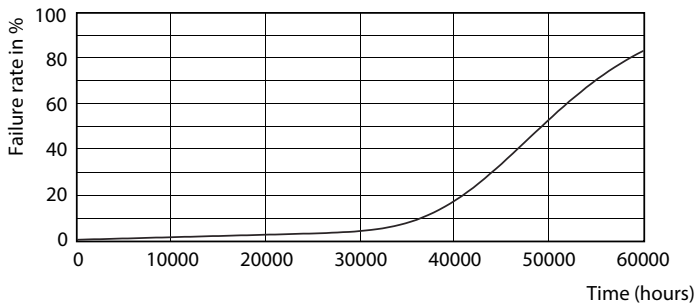
## Lifetime



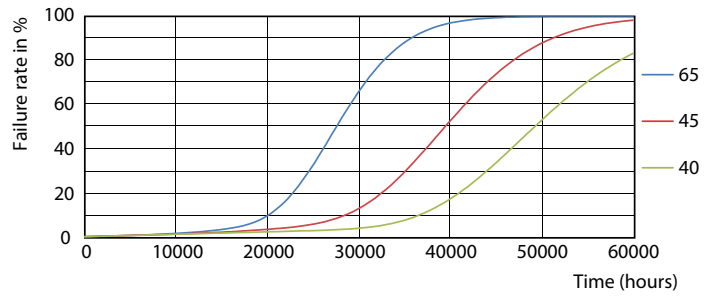
LEDtube 600mm 8W G5 830 1000lm



LEDtube 600mm 8W G5 830 1000lm



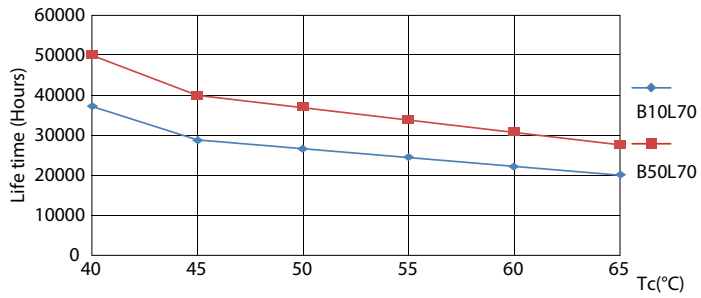
LEDtube 600mm 8W G5 830 1000lm



LEDtube 600mm 8W G5 830 1000lm

# MASTER LEDtube InstantFit HF T5

## Lifetime



LEDtube 600mm 8W G5 830 1000lm

