



# MASTER LEDtube InstantFit HF T5

## Master LEDtube HF 1200mm HO 26W 840 T5

Philips MASTER LEDtube InstantFit T5 integrates a LED light source into a traditional fluorescent form factor. Its unique design creates a perfectly uniform visual appearance which cannot be distinguished from traditional fluorescent. The Philips MASTER LEDtube InstantFit T5 is the ideal solution for customers who have higher light output requirements and want to maximize value over lifetime. Full energy savings & longer lifetime result in attractive payback times and TCO benefits.

### Product data

General Information		Power (Nom)	
Cap-Base	G5 [ G5]		26 W
EU RoHS compliant	Yes	Lamp Current (Max)	700 mA
Nominal Lifetime (Nom)	50000 h	Lamp Current (Min)	450 mA
Switching Cycle	50000X	Starting Time (Nom)	0.5 s
		Warm Up Time to 60% Light (Nom)	0.5 s
		Power Factor (Nom)	0.9
		Voltage (Nom)	50-60 V
Light Technical		Temperature	
Color Code	840 [ CCT of 4000K]	T-Ambient (Max)	45 °C
Beam Angle (Nom)	160 °	T-Ambient (Min)	-20 °C
Luminous Flux (Nom)	3900 lm	T-Storage (Max)	65 °C
Color Designation	Cool White (CW)	T-Storage (Min)	-40 °C
Correlated Color Temperature (Nom)	4000 K	T-Case Maximum (Nom)	45 °C
Luminous Efficacy (rated) (Nom)	150.00 lm/W		
Color Consistency	<6	Controls and Dimming	
Color Rendering Index (Nom)	83	Dimmable	No
LLMF At End Of Nominal Lifetime (Nom)	70 %		
Operating and Electrical			
Input Frequency	35000-80000 Hz		

# MASTER LEDtube InstantFit HF T5

## Mechanical and Housing

Bulb Material	Plastic
Product Length	1200 mm

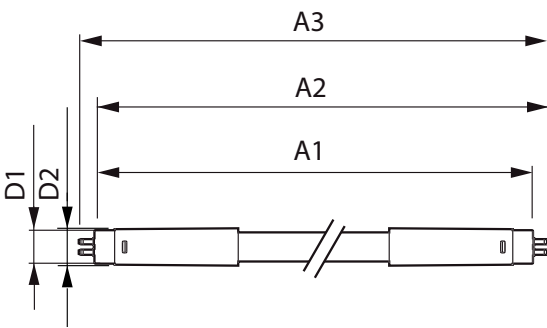
## Approval and Application

Energy Efficiency Label (EEL)	A++
Energy Saving Product	Yes
Approval Marks	RoHS compliance TUV CE marking KEMA Keur certificate
Energy Consumption kWh/1000 h	31 kWh

## Product Data

Full product code	871869670529200
Order product name	Master LEDtube HF 1200mm HO 26W 840 T5
EAN/UPC - Product	8718696705292
Order code	929001338402
Numerator - Quantity Per Pack	1
Numerator - Packs per outer box	10
Material Nr. (12NC)	929001338402
Net Weight (Piece)	0.155 kg

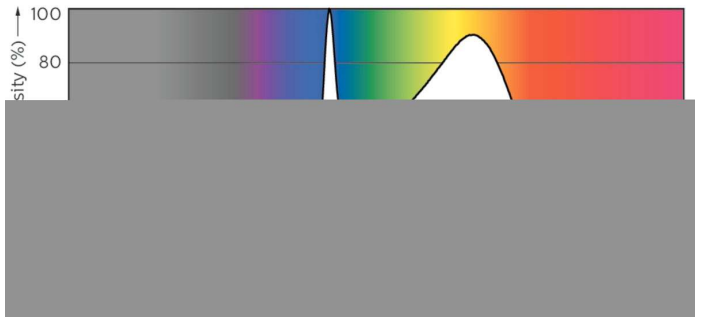
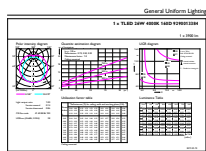
## Dimensional drawing



TLED 1200mm 26-49W 3900lm 4000K G5 ND

Product	D1	D2	A1	A2	A3
Master LEDtube HF 1200mm HO 26W 840 T5	15.2 mm	21 mm	1147.8 mm	1154.9 mm	1162 mm

## Photometric data



LEDtube 1200mm 26W G5 840 3900lm

LEDtube 1200mm 26W G5 840 3900lm

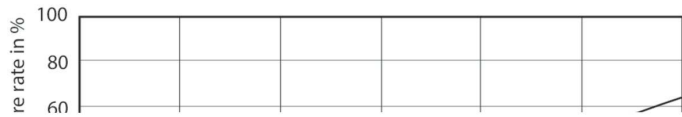
# MASTER LEDtube InstantFit HF T5

## Photometric data



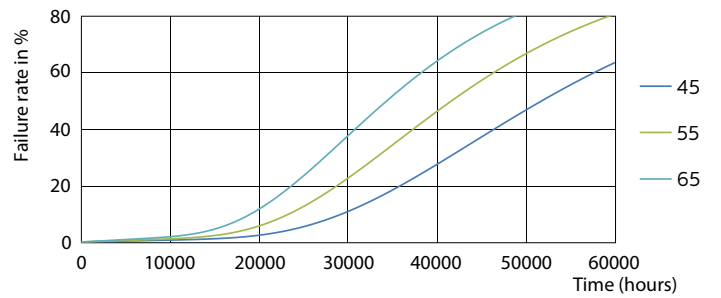
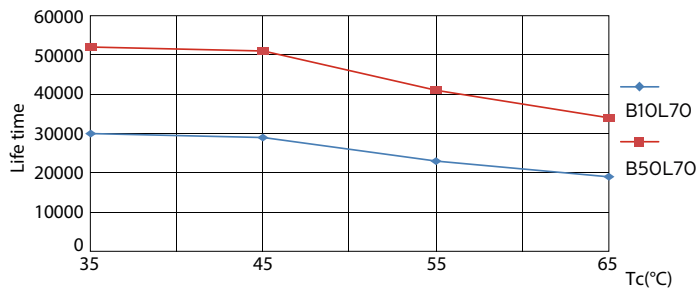
LEDtube 1200mm 26W G5

## Lifetime



LEDtube 1200mm 26W G5 3900lm

LEDtube 1200mm 26W G5 3900lm

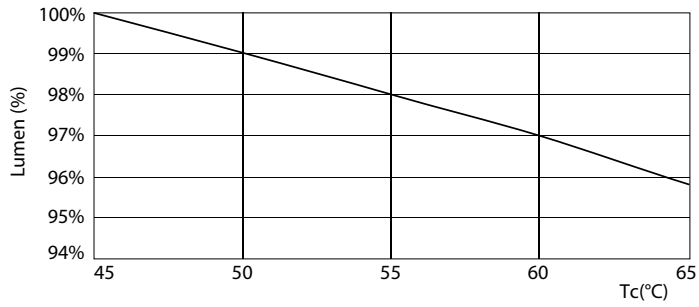


LEDtube 1200mm 26W G5 3900lm

LEDtube 1200mm 26W G5 3900lm

# MASTER LEDtube InstantFit HF T5

## Lifetime



LEDtube 1200mm 26W G5 3900lm

