



# MasterClass LEDtube InstantFit T8

## 7T8 LED/24-4000 IF 10/1

The Masterclass LED Type A - Ballast Driven (Plug and Play) InstantFit TLED is a great LED solution suitable for replacing T8 fluorescent lamps, using an existing ballast. Specific lamps can also be used on Philips Xitanium driver for Type C applications.

### Product data

General Information	
Cap-Base	G13 [ Medium Bi-Pin Fluorescent]
Nominal Lifetime (Nom)	50000 h
Switching Cycle	50000X
B50L70	50000 h

Light Technical	
Color Code	840 [ CCT of 4000K]
Luminous Flux (Nom)	1150 lm
Luminous Flux (Rated) (Nom)	1150 lm
Correlated Color Temperature (Nom)	4000 K
Color Consistency	<6
Color Rendering Index (Nom)	82
LLMF At End Of Nominal Lifetime (Nom)	70 %

Operating and Electrical	
Input Frequency	20000-120000 Hz
Power (Rated) (Nom)	7 W
Lamp Current (Max)	240 mA
Lamp Current (Min)	80 mA

Starting Time (Nom)	0.5 s
Warm Up Time to 60% Light (Nom)	0.1 s
Power Factor (Nom)	0.9
Voltage (Nom)	120-277, 347 V

Temperature	
T-Ambient (Max)	45 °C
T-Ambient (Min)	-20 °C
T-Storage (Max)	65 °C
T-Storage (Min)	-40 °C
T-Case Maximum (Nom)	50 °C

Controls and Dimming	
Dimmable	No

Mechanical and Housing	
Product Length	600 mm

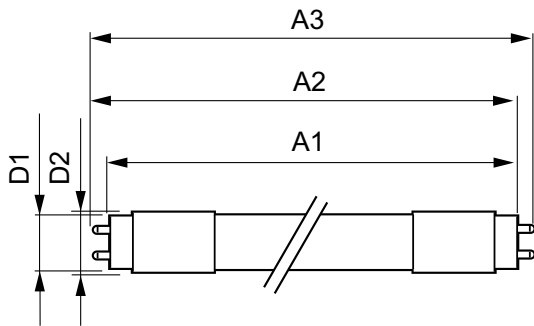
Approval and Application	
Energy Saving Product	Yes

# MasterClass LEDtube InstantFit T8

Approval Marks	UL certificate RoHS compliance DLC compliance
<b>Product Data</b>	
Order product name	7T8 LED/24-4000 IF 10/1
EAN/UPC - Product	046677472290
Order code	929001311004

Numerator - Quantity Per Pack	1
Numerator - Packs per outer box	10
Material Nr. (12NC)	929001311004
Net Weight (Piece)	0.090 kg

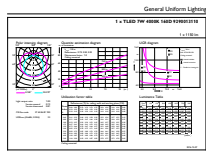
## Dimensional drawing



TLED 2ft 600mm 6-17W 1050lm 4000K G13 ND

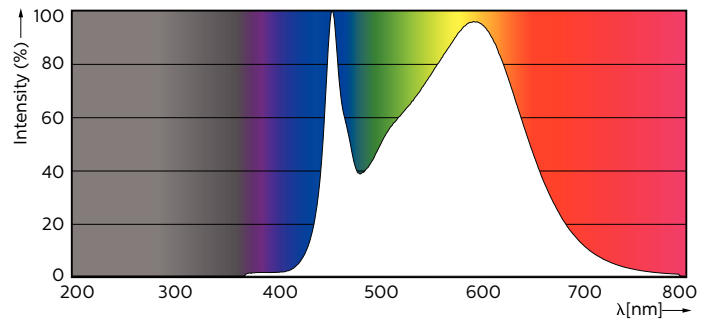
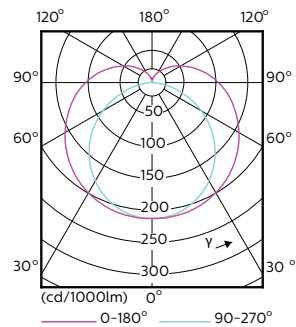
Product	D1	D2	A1	A2	A3
7T8 LED/24-4000 IF 10/1	25.7 mm	26.3 mm	588.6 mm	595.7 mm	602.8 mm

## Photometric data



General Information 11 Photo Lighting 11 Page 117

LEDtube 600mm 7W G13 840 1150lm



LEDtube 600mm 7W G13 840 1150lm

# MasterClass LEDtube InstantFit T8

## Lifetime

