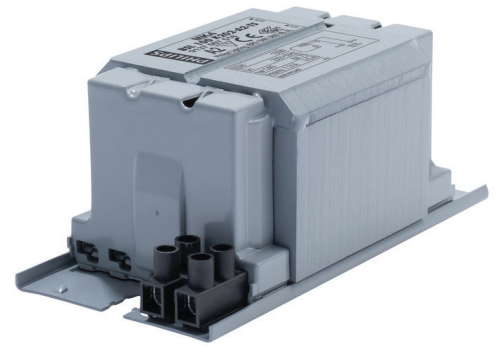


PHILIPS

Lighting



Gear for SDW-T lamps

BSL 100 K202-A2-TS 230V 50Hz

CSLS electronic control unit with impregnated (HID 'BASIC') or encapsulated (HID 'Heavy Duty') electromagnetic ballasts

Warnings and Safety

- Climatic suitability CSLS and HID BASIC: restricted to built in situations under normal conditions
- Climatic suitability CSLS and HID Heavy Duty: use in luminaires under humid conditions (not drip-proof)

Product data

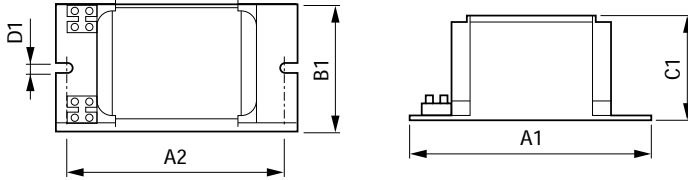
General Information		Connector Type	
Application Code	K202-A2-TS	Screw	
Design	BC1-118	System characteristics	
Lamp Type	SDW-T	Capacitor	14µF/250V
Number of Lamps	1 piece/unit	Rated Ballast-Lamp Power	150/100 W
Operating and Electrical		Recommended Ignitor	only CSLS 100 (913619189966)
Input Voltage	230 V	Temperature	
Input Frequency	50 Hz	T-Storage (Max)	130 °C
Power Factor 100% Load (Nom)	0.85	T-Storage (Min)	-30 °C
Mains Voltage Performance (AC)	-8%~+6%	T-Winding (Max)	140 °C
Mains Voltage Safety (AC)	-10%~+10%	Delta-T Normal Conditions	70 °C
Input Current with PF Correction	0.55 A	Approval and Application	
Input Current without PF Correction	1.31 A	Active Temperature Protection	Yes
Power Factor without PF Compensation (Nom)	0.4	Approval Marks	CE marking ENEC certificate
Power Losses (Nom)	15 W	Product Data	
Wiring		Full product code	871869674076700
Wire Striplength	6.0 mm	Order product name	BSL 100 K202-A2-TS 230V 50Hz
Ballast Contact Wire Cross Section	2.5 mm ²	EAN/UPC - Product	8718696740767

Gear for SDW-T lamps

Order code	913700751826
Numerator - Quantity Per Pack	1
Numerator - Packs per outer box	6
Material Nr. (12NC)	913700751826

Net Weight (Piece)	1.400 kg
--------------------	----------

Dimensional drawing



Product	A1	A2	B1	C1	D1
BSL 100 K202-A2-TS 230V 50Hz	123 mm	98 mm	61 mm	52 mm	6.2 mm

BSL 100 K202-A2-TS 230V 50Hz

