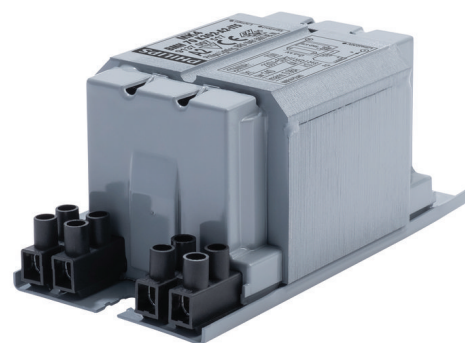


PHILIPS

Lighting



HID-Basic BSN/BMH semi-parallel for SON/CDO/CDM/MH/ HPI

BMH 70 K302-A2-ITS 230V 50Hz

Impregnated electromagnetic copper ballasts for use with an external semi-parallel ignitor for CDM, CDO, MH, HPI (Plus) and SON lamps

Product data

General Information	
Application Code	K302-A2-ITS
Design	BC1-118
Lamp Type	MH
Number of Lamps	1 piece/unit
Operating and Electrical	
Input Voltage	230 V
Input Frequency	50 Hz
Power Factor 100% Load (Nom)	0.85
Mains Voltage Performance (AC)	-8%+6%
Mains Voltage Safety (AC)	-10%+10%
Input Current with PF Correction	0.45 A
Input Current without PF Correction	0.98 A
Power Factor without PF Compensation (Nom)	0.35

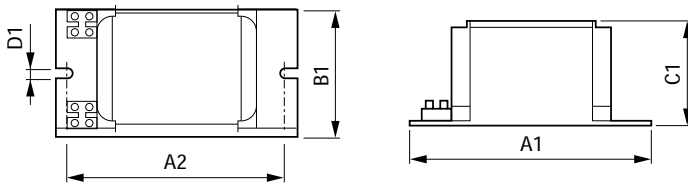
Power Losses (Nom)	11.7 W
Wiring	
Wire Striplength	6.0 mm
Ballast Contact Wire Cross Section	2.5 mm ²
Connector Type	Screw
System characteristics	
Capacitor	12μF/250V
Rated Ballast-Lamp Power	70 W
Recommended Ignitor	for SON/CDO/CDM lamps ignitor SKD 578 (913700655366) or series digital SUD40 (913700193591)
Temperature	
T-Storage (Max)	130 °C
T-Storage (Min)	-30 °C

HID-Basic BSN/BMH semi-parallel for SON/CDO/CDM/MH/HPI

T-Winding (Max)	140 °C
Delta-T Normal Conditions	55 °C
Approval and Application	
Active Temperature Protection	Yes
Approval Marks	CE marking ENEC certificate
Product Data	
Full product code	871869674074300

Order product name	BMH 70 K302-A2-ITS 230V 50Hz
EAN/UPC - Product	8718696740743
Order code	913700751726
Numerator - Quantity Per Pack	1
Numerator - Packs per outer box	6
Material Nr. (12NC)	913700751726
Net Weight (Piece)	1.260 kg

Dimensional drawing



Product	A1	A2	B1	C1	D1
BMH 70 K302-A2-ITS 230V 50Hz	118 mm	94 mm	61 mm	52 mm	6.2 mm

BMH 70 K302-A2-ITS 230V 50Hz

