

PrimaVision Mini for CDM

HID-PV m 35 /S CDM 220-240V 50/60Hz

Miniature HID electronic gear for PGJ5 CDM lamps – freeing up the boundaries of creativity and innovation in luminaire design

Product data

General Information	
Application Code	HPF
Type Version	mk2
Lamp Type	CDM
Number of Lamps	1 piece/unit
Suitable For Outdoor Use	No
Number of Products on MCB (16A Type B) (Nom)	24
Automatic Restart	Yes

Operating and Electrical	
Input Voltage	220 to 240 V
Input Frequency	50 to 60 Hz
Minimum Mains Voltage Operation (Min)	198 V
Power Factor 100% Load (Nom)	0.95
Ignition Voltage (Max)	4.5 kV
Ignition Voltage (Min)	3.3 kV
Ignition Switch-Off Time (Nom)	21 min
Mains Voltage Performance (AC)	198-254V
Mains Voltage Safety (AC)	180-264V
Earth Leakage Current (Max)	0.5 mA
Inrush Current Width	0.25 ms

Constant Wattage Deviation	-3%/+3%
Power Losses (Nom)	5 W
Inrush Current Peak (Max)	25 A

Wiring	
Cable Capacity Output Wires Mutual (Nom)	50 pF
Cable Length From Device to Lamp	0.5 m
Wire Striplength	8.5-9.5 mm
Ballast Contact Wire Cross Section	0.75-1.50 mm ²
Connector Type	Insert

System characteristics	
Rated Ballast-Lamp Power	39 W

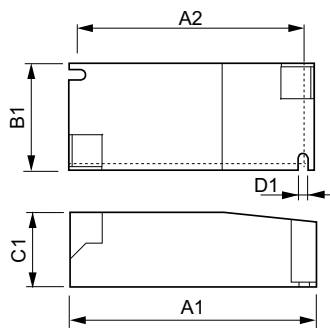
Temperature	
T-Ambient (Max)	50 °C
T-Ambient (Min)	-20 °C
T-Storage (Max)	80 °C
T-Storage (Min)	-25 °C
T-Case Lifetime (Nom)	85 °C
T-Case Maximum (Max)	85 °C

PrimaVision Mini for CDM

Mechanical and Housing	
Housing	/S
Approval and Application	
Active Temperature Protection	Yes
EMI 9 kHz ... 300 MHz	CISPR 15 ed 7.2 / 2009
Vibration Standard	IEC68-2-6 F c
Bumps Standard	IEC 68-2-29 Eb
Approval Marks	CE marking ENEC certificate VDE certificate
Hum And Noise Level	< 25 dB(A)

Product Data	
Full product code	871829167161900
Order product name	HID-PV m 35 /S CDM 220-240V 50/60Hz
EAN/UPC - Product	8718291671619
Order code	913700696166
Numerator - Quantity Per Pack	1
Numerator - Packs per outer box	12
Material Nr. (12NC)	913700696166
Net Weight (Piece)	0.115 kg

Dimensional drawing



HID-PV m 35 /S CDM HPF 220-240V 50/60Hz

Product	D1	C1	A1	A2	B1
HID-PV m 35 /S CDM 220-240V 50/60Hz	4.2 mm	30.2 mm	97.3 mm	88.3 mm	43.3 mm

