



LuxSpace, surface mounted

DN570C LED40S/830 PSU-E C WH

LUXSPACE 2 COMPACT LOW HEIGHT - LED Module, system flux 4000 lm - 830 warm white - Power supply unit DC compatible, external - High-gloss mirror - Push-in connector and pull relief - White RAL 9003

Customers are looking to optimize all their resources, and that means not just their running costs (energy, etc.) but also their human resources. Energy savings are therefore a priority, but they must not have an adverse effect on the well-being of employees, who need a pleasant environment in order to be more productive, or on customers, who want to enjoy their shopping experience. LuxSpace provides the perfect combination of efficiency, light comfort and design, without compromising on lighting performance (color rendering and color uniformity). It offers a wide choice of options for creating the desired ambience, no matter the application.

Product data

General Information			
Lamp family code	LED40S [LED Module, system flux 4000 lm]	Luminaire light beam spread	80°
Light source color	830 warm white	Connection	Push-in connector and pull relief
Cap-Base	- [-]	Cable	-
Light source replaceable	No	Protection class IEC	Safety class I
Number of gear units	1 unit	Glow-wire test	Temperature 850 °C, duration 5 s
Gear	-	Flammability mark	For mounting on normally flammable surfaces
Driver/power unit/transformer	Power supply unit DC compatible, external	CE mark	CE mark
Driver included	Yes	ENEC mark	ENEC mark
Optic type	High-gloss mirror	UL mark	-
		Warranty period	5 years

LuxSpace, surface mounted

Remarks	*-Per Lighting Europe guidance paper "Evaluating performance of LED based luminaires - January 2018": statistically there is no relevant difference in lumen maintenance between B50 and for example B10. Therefore, the median useful life (B50) value also represents the B10 value.
Constant light output	No
Number of products on MCB of 16 A type B	32
EU RoHS compliant	No
Service tag	Yes
Product family code	DN570C [LUXSPACE 2 COMPACT LOW HEIGHT]
Unified glare rating CEN	22

Operating and Electrical

Input Voltage	220-240 V
Input Frequency	50 Hz
Inrush current	14.5 A
Inrush time	0.220 ms
Power Factor (Min)	0.9

Controls and Dimming

Dimmable	No
----------	----

Mechanical and Housing

Housing Material	Aluminum die cast
Reflector material	Polycarbonate aluminum coated
Optic material	Polycarbonate
Optical cover/lens material	Polycarbonate
Fixation material	Steel
Optical cover/lens finish	Frosted
Overall height	217 mm
Overall diameter	250 mm
Diameter	250 mm
Color	White RAL 9003
Dimensions (Height x Width x Depth)	217 x NaN x NaN mm (8.5 x NaN x NaN in)

Approval and Application

Ingress protection code	IP20 [Finger-protected]
Mech. impact protection code	IK02 [0.2 J standard]

Initial Performance (IEC Compliant)

Initial luminous flux (system flux)	4200 lm
Luminous flux tolerance	+/-10%
Initial LED luminaire efficacy	124 lm/W
Init. Corr. Color Temperature	3000 K
Init. Color Rendering Index	>80
Initial chromaticity	(0.43, 0.40) SDCM <3
Initial input power	34 W
Power consumption tolerance	+/-10%

Over Time Performance (IEC Compliant)

Control gear failure rate at median useful life 50000 h	5 %
Lumen maintenance at median useful life* 50000 h	L90

Application Conditions

Ambient temperature range	+10 to +25 °C
Performance ambient temperature Tq	25 °C
Suitable for random switching	Yes

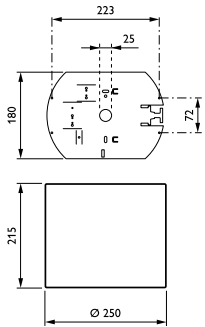
Product Data

Full product code	871829194484300
Order product name	DN570C LED40S/830 PSU-E C WH
EAN/UPC - Product	8718291944843
Order code	910503706709
Numerator - Quantity Per Pack	1
Numerator - Packs per outer box	1
Material Nr. (12NC)	910503706709
Net Weight (Piece)	1.930 kg



LuxSpace, surface mounted

Dimensional drawing



LuxSpace gen2 DN570B-DN572B

