



New generation of specialty LEDtube

Specialty LEDtube

Philips specialty LEDtube integrates a LED light source into a traditional fluorescent form factor. This product is the ideal solution for relamping to serve multi-purpose usage: it meets general lighting requirements, offers significant energy savings, and special function such as Visible Light Communication.

Benefits

- Highly energy-efficient
- Conventional form factor to fit into existing luminaires
- Easy installation
- No mercury

Features

- Reduced operational cost thanks to lower energy consumption
- Fastest and easiest way to upgrade existing luminaires to LED technology, completely safe product and installation process
- Lower maintenance cost thanks to 2-3 times longer lifetime than conventional lamps

Application

- Hospitality, retail, office, industrial applications

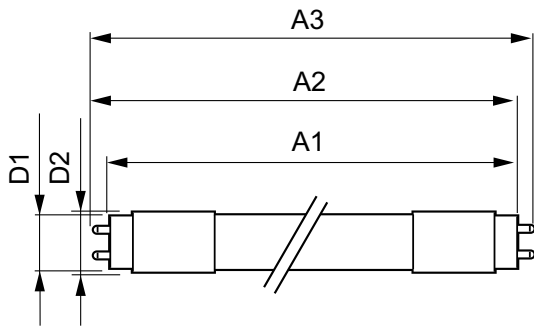
Specialty LEDtube

Versions



G13

Dimensional drawing



Product	D1	D2	A1	A2	A3
14T8/48-840/1F21/VLC 10/1	25.7 mm	26.3 mm	1198.1 mm	1205.2 mm	1212.3 mm
14T8/48-835/1F20/VLC 10/1	25.7 mm	26.3 mm	1198.1 mm	1205.2 mm	1212.3 mm

Specialty LEDtube

Approval and Application

Energy Consumption kWh/1000 h	- kWh
Energy Efficiency Label (EEL)	Not applicable

Controls and Dimming

Dimmable	No
----------	----

Operating and Electrical

Input Frequency	20000-120000 Hz
Voltage (Nom)	120-277, 347 V
Power (Rated) (Nom)	14 W
Starting Time (Nom)	0.5 s

General Information

Cap-Base	G13
Nominal Lifetime (Nom)	70000 h
Switching Cycle	50000X

Light Technical

Beam Angle (Nom)	160 °
Color Rendering Index (Nom)	82
Llmf At End Of Nominal Lifetime (Nom)	70 %

Mechanical and Housing

Bulb Shape	Tube, double-ended
------------	--------------------

Temperature

T-Ambient (Max)	45 °C
T-Ambient (Min)	-20 °C
T-Case Maximum (Nom)	50 °C
T-Storage (Max)	65 °C
T-Storage (Min)	-40 °C

Light Technical

Order Code	Full Product Name	Color Code	Correlated Color	
			Temperature (Nom)	Luminous Flux (Nom)
929001870104	14T8/48-835/IF20/VLC 10/1	835	3500 K	2000 lm
929001870204	14T8/48-840/IF21/VLC 10/1	840	4000 K	2100 lm

