



The new generation of energy saving and affordable T8 Mains tube lighting

Essential LED tubes T8 Mains

The Essential LEDtube is an affordable LED solution suitable for an easy replacement of T8 fluorescent lamps. Thanks to a unique design, Philips Essential LED tube T8 Mains can be directly installed in luminaires operating on mains power connection. The product provides a natural lighting effect for use in general lighting applications, as well as instant energy savings – an environmentally friendly solution.

Benefits

- Up to 50% energy saving compared with conventional fluorescent systems
- Easy installation: retrofit replacement of existing T8 lamps improving the quality of light
- Lower maintenance costs

Features

- Retrofit solution with Long lifetime of 25.000hs
- Excellent quality of light with CRI >80
- Instant on, no flicker or buzz

Application

- Parking lots and covered car parks, warehouses
- Retail, offices
- Public areas

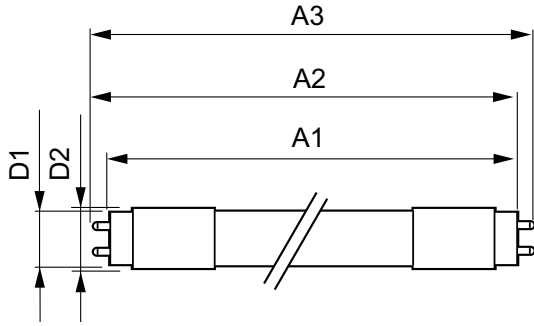
Essential LED tubes T8 Mains

Versions



LEDtube 600 mm 8 W, 9 W, 1200 mm 16 W, 18 W

Dimensional drawing



Product	D1	D2	A1	A2	A3
CorePro LEDtube 600mm	25.6 mm	27.8 mm	589.8 mm	595.7 mm	604.0 mm
9W 840 T8 C W G					

