



TubeLine LED unit - Optimized comfort with linear LED solution

TubeLine

Fluorescent linear lighting has traditionally been the preferred choice for customers demanding a high level of visual comfort. With excellent lighting uniformity on the road and walls, perfect visual guidance and high color recognition, linear lighting offers the driver superior lighting quality and safety as well as high system redundancy compared to point-source lighting solutions. With TubeLine, the same lighting quality can be achieved but with the advantages of LED technology.

TubeLine is a state-of-the-art LED tunnel luminaire which offers all the benefits of linear lighting. With the latest LED technology, optimized dimensions and attractive pricing, linear lighting has never been more achievable within the constraints of limited budgets.

Benefits

- Optimal traffic flow due to increased visual comfort and safety compared to point-source lighting
- Quick return to investment
- Flexible, easy-to-install solution
- Equipped with Service tag, a QR-based identification system that makes each luminaire uniquely identifiable and provides maintenance, installation and spare part information

Features

- Robust, corrosion-resistant aluminum build
- Standard length 2 m
- Smooth design, easy to clean
- Remote driver designed to prevent lane closures
- Lumen packages up to 14,400 lm
- Flexible mounting and connectivity
- Compatible with Philips Lighting controls

Application

- Traffic tunnels
- Underpasses

Specifications

Type	BGP360
Light source	Integral LED-module
Power	21-108 W (21/44/72/82/108 W system power)
Luminous flux	3000 up to 14,400 lm (3000/6000/10,000/11,400/14,400 lm)
Luminaire efficacy	> 120 lm/W (129/124/126/125/120 Lm/W)
Correlated Color	NW (4000 K)
Temperature	Optional CW (5700 K)
Color Rendering Index	Minimal 70
Lumen maintenance at median useful life* 100000 h	L95
Performance Ambient Temperature Tq	+25 °C
Operating temperature range	-30 to +45 °C
Driver	Separate (non-self ballasted LED-module)
Options	Flying lead length Flying lead cable type Through wiring Cable gland metal Connector type
Optic	DTS, DTS-NB, DTS-WB, DTA, DTA-NB, DTA-WB
Optical element	Lenses
Optical cover	Glass flat
Material	Housing: extruded aluminum with diecasted endcaps and glass cover Extruded aluminum profiles: AlMg Si 0.5 anodized 25 um Endcaps: diecaster aluminum, LM-6 powder coated 65 um Glass cover: 5mm, thermally toughened

Color	Extruded aluminum: natural Diecaster aluminum endcaps
Connection	Flying lead with plug fitted
Maintenance	NOT openable on site
Installation	Can be mounted with various mounting brackets: Standard, Ceiling and Cable tray mounting brackets. A trunking solution is available: trunking profiles and cabling/connectivity solution. No integrated driver, a separate driver unit needs to be connected to power the led unit. Operating temperature: -30 to +40 °C Recommended mounting height: > 4 m Mounting orientation: horizontal length wise in the tunnel
Cable gland	M12
Accessories	Mounting brackets: Standard, Ceiling and Cable tray mounting brackets. Trunking profiles (at 2/4/6 mtr length) and cabling/connectivity solution. Special driver units to power the TubeLine locally and units for remote powersupply.
Remarks	All accessories need to be ordered seperately.

TubeLine

Versions



BGP360

Product details

TubeLine_BGP360-DP01.tif



TubeLine_BGP360-DP02.tif



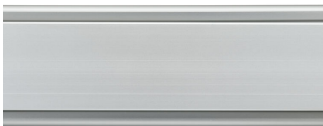
TubeLine_BGP360-DP03.tif



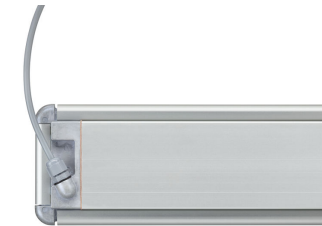
TubeLine_BGP360-DP04.tif



TubeLine_BGP360-DP05.tif



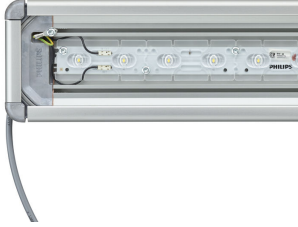
TubeLine_BGP360-DP06.tif



TubeLine

Product details

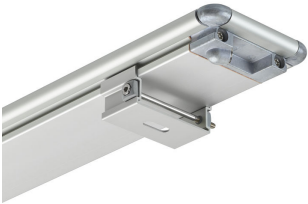
TubeLine_BGP360-DP07.tif



TubeLine_BGP360-DP08.tif



TubeLine_BGP360_ZGP360-DP09.tif



Accessories

TubeLine Acc.

Ordercode 912300023728



TubeLine Acc.

Ordercode 912300023729



TubeLine Acc.

Ordercode 912300023730



Tubeline Driver Unit

Ordercode 912300024709,
912300024710, 912300024711,
912300024848



Approval and Application

Mech. impact protection code	IK08
Surge Protection (Common/Differential)	-

Controls and Dimming

Dimmable	No
----------	----

General Information

Luminaire light beam spread	150°
CE mark	CE mark
Light source color	740 neutral white
Optical cover/lens type	Flat glass
Driver included	No
Flammability mark	-
Gear	-
Gland material	Cable gland plastic
Light source replaceable	No
Number of gear units	1 unit
Optic type	Distribution tunnel symmetrical
Product Family Code	BGP360
UL mark	-

Initial Performance (IEC Compliant)

Init. Corr. Color Temperature	4000 K
Init. Color Rendering Index	≥80

Light Technical

Standard tilt angle side entry	-
Standard tilt angle posttop	-
Upward light output ratio	0

Mechanical and Housing

Color	Aluminum
-------	----------

Operating and Electrical

Order Code	Full Product Name	Driver current
912300023650	BGP360 LED30/740 DTS CFW C250WM GP	310 mA
912300023651	BGP360 LED60/740 DTS CFW C250WM GP	289 mA
912300023653	BGP360 LED120/740 DTS CFW C250WM GP	550 mA
912300023654	BGP360 LED159/740 DTS CFW C250WM GP	700 mA
912300023655	BGP360 LED30/740 II DTS CFW C250WM GP	310 mA
912300023656	BGP360 LED60/740 II DTS CFW C250WM GP	289 mA
912300023658	BGP360 LED120/740 II DTS CFW C250WM GP	550 mA
912300023659	BGP360 LED159/740 II DTS CFW C250WM GP	700 mA

General Information

Order Code	Full Product Name	Lamp family code	Number of light sources
912300023650	BGP360 LED30/740 DTS CFW C250WM GP	LED30	24 pcs
912300023651	BGP360 LED60/740 DTS CFW C250WM GP	LED60	48 pcs
912300023653	BGP360 LED120/740 DTS CFW C250WM GP	LED120	48 pcs
912300023654	BGP360 LED159/740 DTS CFW C250WM GP	LED159	48 pcs

Order Code	Full Product Name	Lamp family code	Number of light sources
912300023655	BGP360 LED30/740 II DTS CFW C250WM GP	LED30	24 pcs
912300023656	BGP360 LED60/740 II DTS CFW C250WM GP	LED60	48 pcs
912300023658	BGP360 LED120/740 II DTS CFW C250WM GP	LED120	48 pcs
912300023659	BGP360 LED159/740 II DTS CFW C250WM GP	LED159	48 pcs

Initial Performance (IEC Compliant)

TubeLine

Order Code	Full Product Name	Initial luminous flux
912300023650	BGP360 LED30/740 DTS CFW C250WM GP	2700 lm
912300023651	BGP360 LED60/740 DTS CFW C250WM GP	5400 lm
912300023653	BGP360 LED120/740 DTS CFW C250WM GP	10680 lm
912300023654	BGP360 LED159/740 DTS CFW C250WM GP	14240 lm

Order Code	Full Product Name	Initial luminous flux
912300023655	BGP360 LED30/740 II DTS CFW C250WM GP	2700 lm
912300023656	BGP360 LED60/740 II DTS CFW C250WM GP	5400 lm
912300023658	BGP360 LED120/740 II DTS CFW C250WM GP	10680 lm
912300023659	BGP360 LED159/740 II DTS CFW C250WM GP	14240 lm

