

Magnetic dimmable controller

Step Dim controllers for SON lamps

The Step Dim controller is an electronic controller for Step Dim lighting systems. Dimming is realized by switching to a lower wattage during non-peak hours to save electricity.

Benefits

- Great flexibility
- Dim-down and step-up function for early morning
- Black-out resistance function (ESC03)

Features

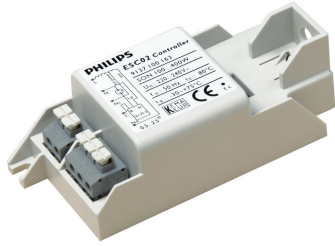
- 16 options for setting the timer
- Strong patent position

Application

- For use with SON, SON-T and SON-T PIA Plus lamps, mainly in road lighting and public lighting applications
- For use in environments with different levels of traffic during peak and non-peak hours
- HID-Basic ballasts should be restricted to built-in situations where relative humidity is limited.

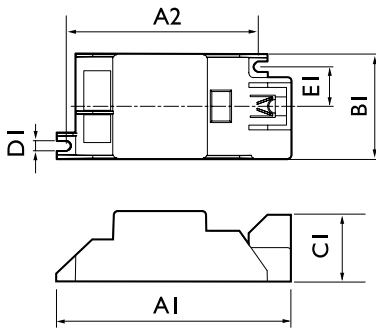
Step Dim controllers for SON lamps

Versions



ESC 02

Dimensional drawing



Product	C1	A1	A2	B1
ESC 02	30 mm	100 mm	81.5 mm	45.0 mm
ESC 02	30 mm	100 mm	81.5 mm	45.0 mm

