

Project:	_____
Location:	_____
Cat. No:	_____
Type:	_____
Lamps:	Qty: _____
Notes:	_____

SiteWise is a complete area lighting management system for parking lot lighting featuring patented central dimming technology. Combine the flexibility, and energy-saving benefits of your in-store control to your parking lot lighting by:

- Providing a sense of security for visitors while saving energy
- Adhering to local code requirements
- Helping you to meet your business objectives



Introduction

- SiteWise communicates through a patented technology, Coded Mains. Luminaires are controlled by a dimming signal sent from the dimming SiteWise cabinet on electrical wires already used for powering the luminaires with:
 - No additional low voltage cables required
 - No wireless communication required to provide optimal energy savings / ROI over traditional HID technology.

Benefits

1. **Peace of mind**
2. **Ease of use**
3. **Energy efficiency**

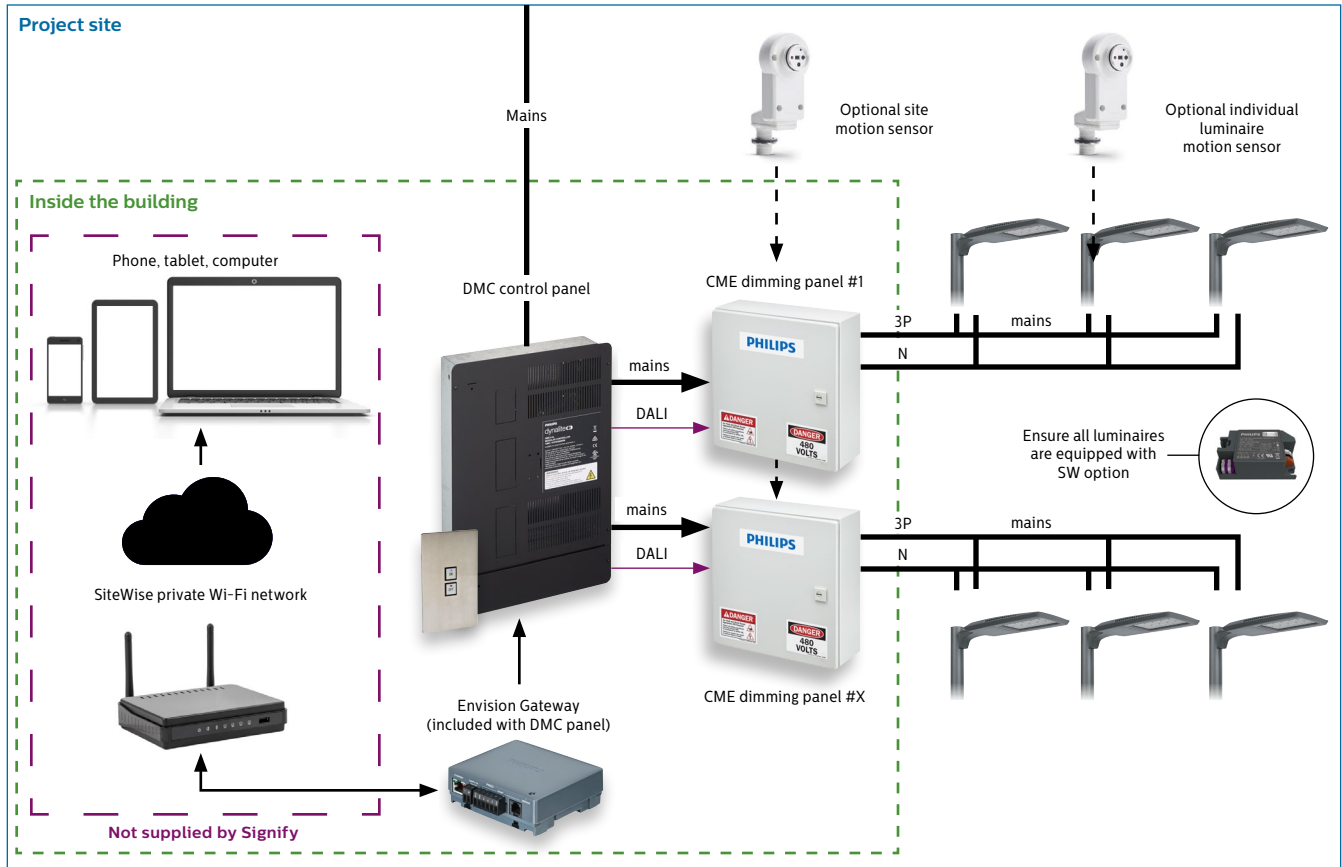
Standard and optional features

- Motion sensors can be added to the system, either site or individual luminaire
- Photocells can be paired with system panel astronomical clock for more site accurate light level reading
- Easy integration into interior lighting control systems
- Highly intuitive user interface on any device (phone, tablet, or computer)
- Secure communication (not wireless based between luminaires and cabinets)
- Aesthetically pleasing with embedded hardware in luminaire (all form factors)
- Create dimming schedules around your needs, and update them at any time
- Easily meet local regulations and energy code requirements
- Variety of luminaires available from site/area, wall, flood, and bollard categories
- Cloud based connection ready (for future needs)

SiteWise

Area lighting management system

System Overview



Description

- SiteWise system provides the capability to dim and turn on/off lights at the circuit level based on a predetermined schedule, and if desired, can be combined with motion sensing. The non-wireless communication system shall operate without the need for any control wires from the dimming signal transmitter cabinet to the dimming signal receiver located in the luminaire.
- The system is supplied including all devices with basic settings to enable the system to operate in a default way immediately upon installation.
- Upon power failure to the control system, controlled lights will operate at 100% output until power is restored. Upon power restoration and without user intervention the schedule once again takes over system operation based on that point in time of day.

- Two different motion sensor scenarios can occur with SiteWise – luminaire-based motion sensors and non-luminaire based motion sensors. With the luminaire-based motion sensor, the sensor comes pre-installed in the luminaire, so no additional wiring is required. For the non-luminaire-based motion sensor, the sensor is mounted outside of the luminaire and is field wired. If the sensor is pole mounted, the wiring goes back to the luminaire or, if mounted at a non-pole location, the sensor is wired back to the CME dimming panel.
- The system does not require commissioning for basic operation. If advanced operation not included with SiteWise is required, a trained Signify technician should be requested.

- Installing contractor shall receive, place, connect, and mount all equipment per the manufacturer's instructions.
- Installing contractor shall furnish all accessory hardware, including, but not limited to wire, conduit, connectors, and other necessary items as required for a complete and functional lighting control system. The wireless router, user interface tablet are not provided by Signify.

SiteWise

Area lighting management system

Components

- Used in a standalone application or as part of a Philips Dynalite networked lighting control system in a building, the control system provides the ability to control the exterior lighting. The control system architecture consists of the following components: DMC (Dynalite) control panel used to provide relay control of the luminaires and signal the dimming cabinet via a DALI signal, the CME dimming cabinet (Coded Mains emitter) used to signal the controlled luminaires, Luminaires with SiteWise (Coded Mains Receiver) located in the luminaire to translate the dimming signal, Envision Gateway (included with DMC panel) to provide time clock functionality and house the webpages used by the tablet user interface, and a keypad for override control (included on the DMC panel). An optional central motion sensor can also be added to individual luminaires or to the dimming cabinet. A optional transformer option is also available for 347V projects.



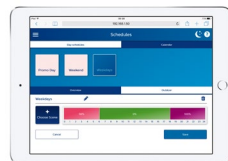
Control panel

- The **SiteWise-DMC2** hosts system data including schedule, user access, alarms etc. There are 2 options:
DMC2-DMD-FR1-Kit (16A) and **DMC2-DMD-FR2-Kit (32A)** including 1 or 2 load controller(s), gateway to connect to customer SiteWise dedicated WIFI router and a override switch (as shown above in picture).



Wireless access point

- A Wireless (WIFI) access point allows the user to access the system without any need of cabling or standalone computer. It establishes the communication between tablet user interface and Ethernet Gateway (PDEG).



Tablet

- Tablets add flexibility to the user for easy control and arrangement of project settings without depending on static/dedicated devices

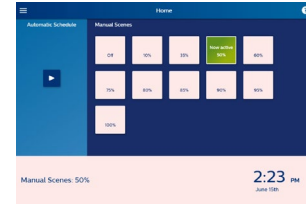


Dimming panel

- The **CME-03**, Dimming Signal Transmitter Cabinet enables communication between control panel and luminaires, using Signify patented technology, Coded Mains, on neutral lines. In order to control the dimming of the luminaires, the Dimming Signal Transmitter cabinet is required. Utilizing patented communication technology, the cabinet transmits signals to the Dimming Signal Receivers located in each luminaire. Additionally, the transmitter device located in the cabinet can accept a signal from an external motion sensor to provide a central override of the operational schedule.

Luminaires

- Luminaires with SiteWise control options (**SW or SIWI**) receive Coded Mains communication from the dimming panel. Can be ordered with a motion sensor (optional). Please see SiteWise webpage or e-catalogue for a complete list.



User interface

- The **SiteWise User Interface** allows the user to configure and reconfigure scheduling depending on site needs as well as manually selecting scenes for temporary override of the schedule until placed back in automatic mode.

Note: The tablet and wireless access point required for utilizing the user interface are NOT provided by Signify.

Dimming panel motion sensor

- External motion sensor (optional). If circuit level / site motion response is desired, an external central motion sensor may be utilized.



Other components (not provided by Signify)

SiteWise

Area lighting management system

Functionalities

Light Level Control

- Switching: The system is capable of implementing basic switching control to turn lights ON and OFF from a flexible choice of networked user interface devices.
- Dimming: capable of converting a DALI broadcast signal to a digital powerline signal through a Dimming Signal Transmitter cabinet.

Personal/Override Control

- Manual Light Control: enables manual user controls to change the behavior of automated functions such as time of day scheduling.
- Dedicated User Interfaces: enable lockout manual override control to be implemented via the provision of a keypad on the control bus located where appropriate.
- Virtual User Interfaces: for manual user control by tablet.

Time Control Scheduling

- It is possible for lights to be switched ON, OFF, dimmed, or behave differently according to a specific schedule. Schedules can be adjusted for weekends, public holidays, or other shut down periods.

Installation Procedure

- 1 Confirm that the luminaires being installed were ordered/shipped with the SiteWise option (Dimming Signal Receiver) and motion sensors (if that option was chosen). Once confirmed install luminaires.



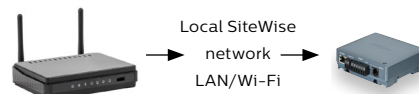
- 3 Install the ethernet gateway and override keypad on cabinet



- 2 Install the control system by first installing the DMC2 and CME-03 panels.

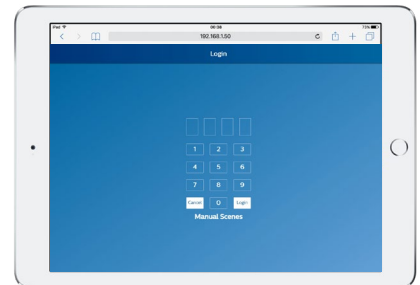


- 4 Connect customer wireless access point to the SiteWise Envision Ethernet Gateway.



- 5 Finally, set-up the user interface by connecting the tablet to the SiteWise dedicated wireless router page using device browsers (we recommend Chrome or Safari) and typing the IP address following address 192.168.1.50. Once connected to SiteWise to login use the advanced user default PIN code which is 4321. Remember to change default pincode to a new one in order to secure the system access and share with admin user(s).

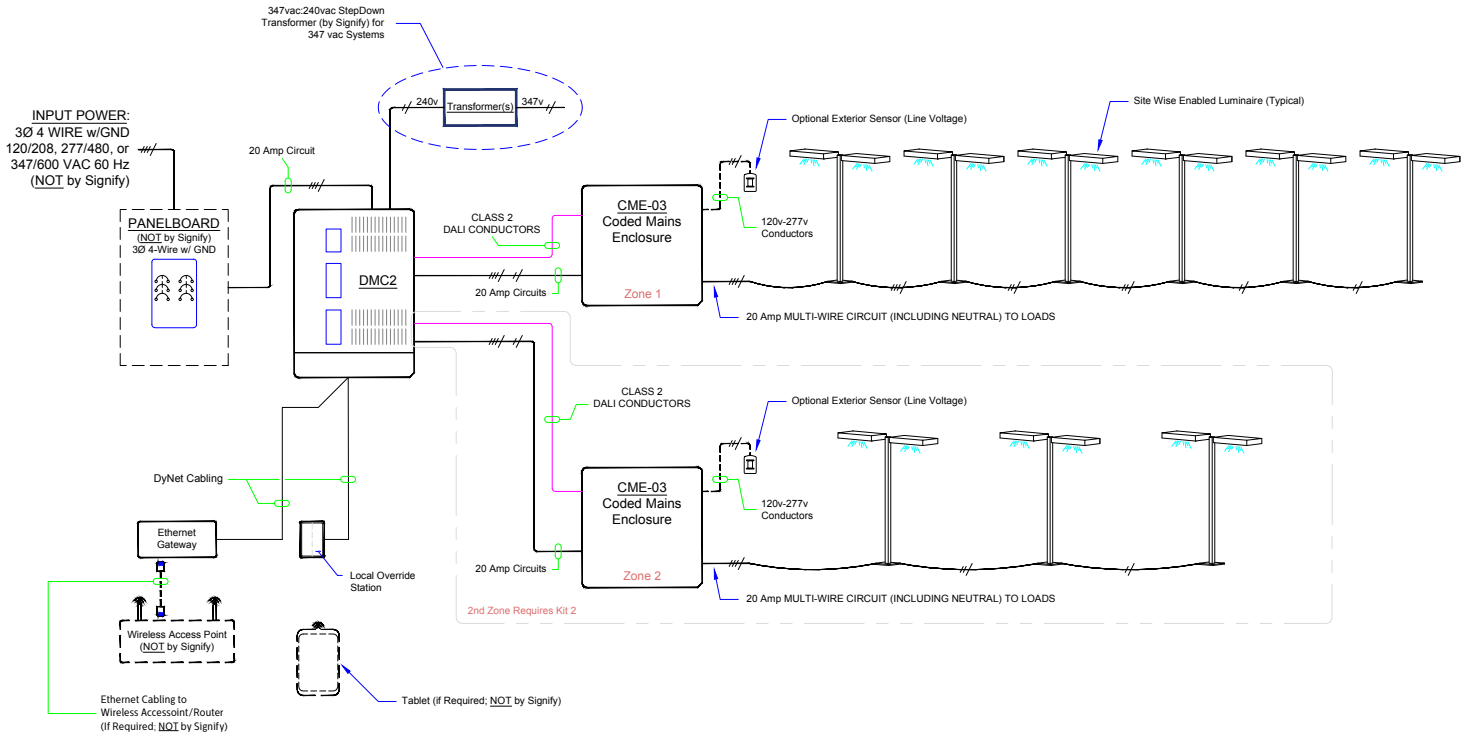
If you need more information on step 5, please refer to SiteWise Quick Start-up guide.



SiteWise

Area lighting management system

System Electrical Schematic

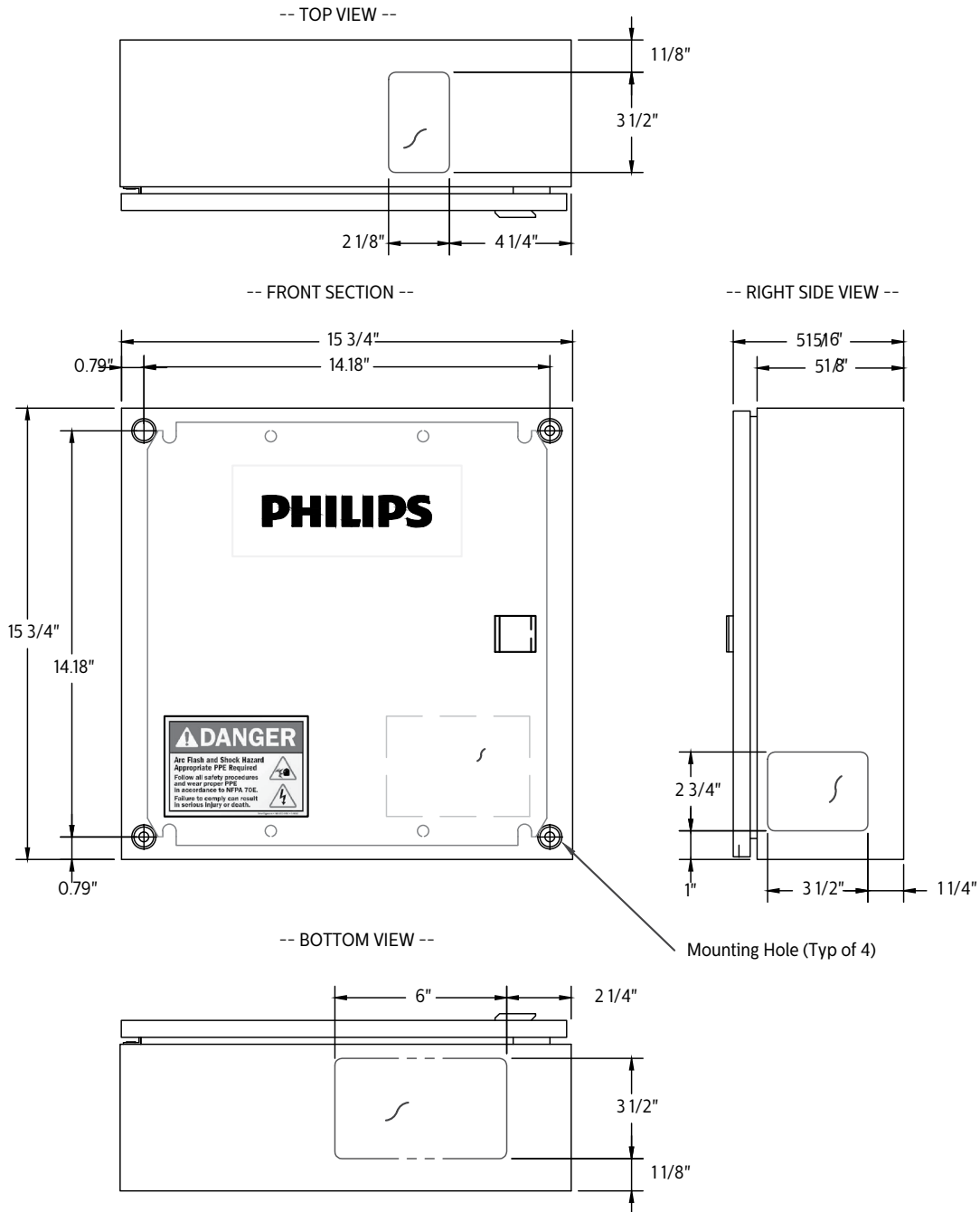


SiteWise

Area lighting management system

System Components Drawings

CME-03

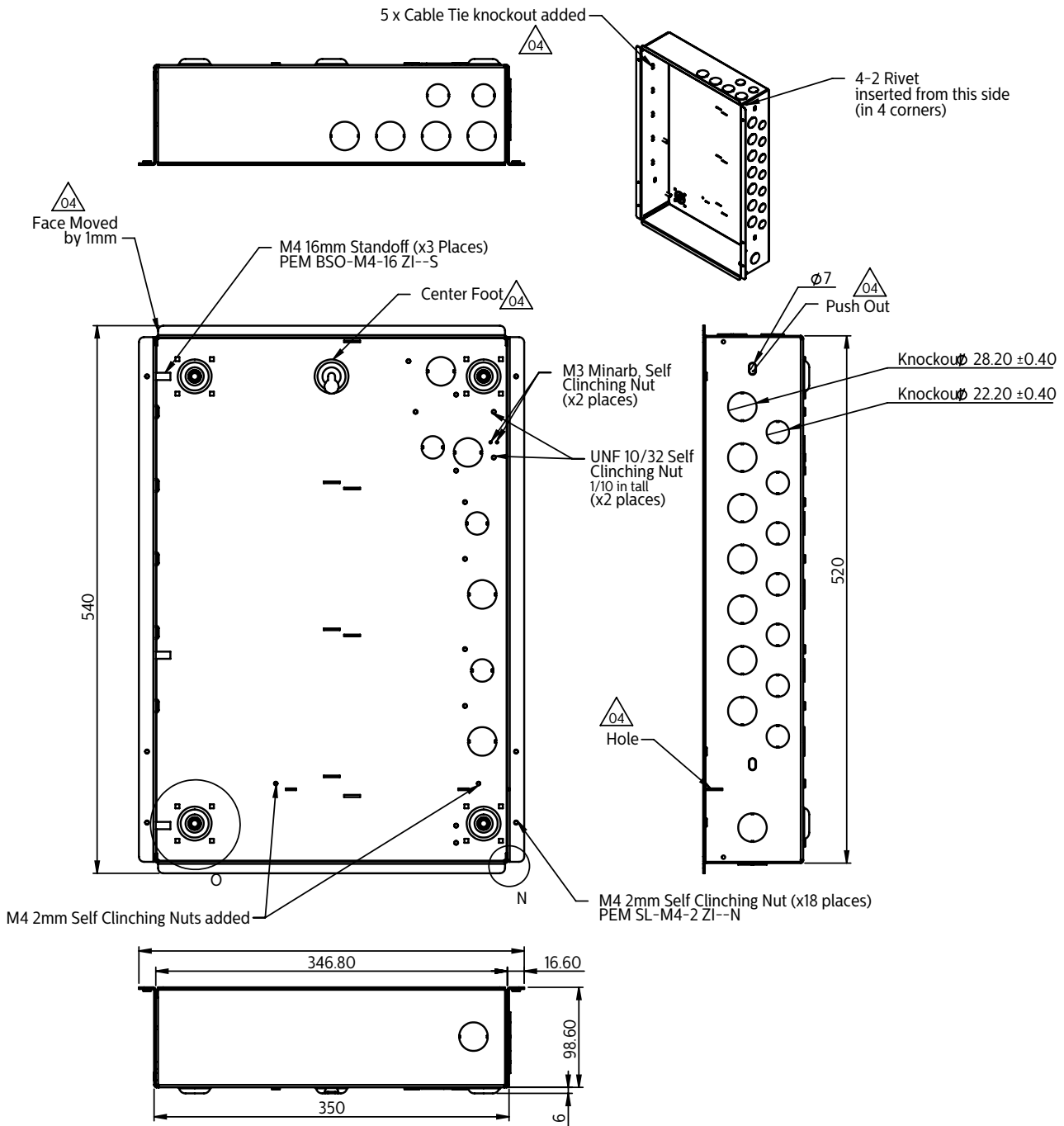


SiteWise

Area lighting management system

System Components Drawings

DMC2

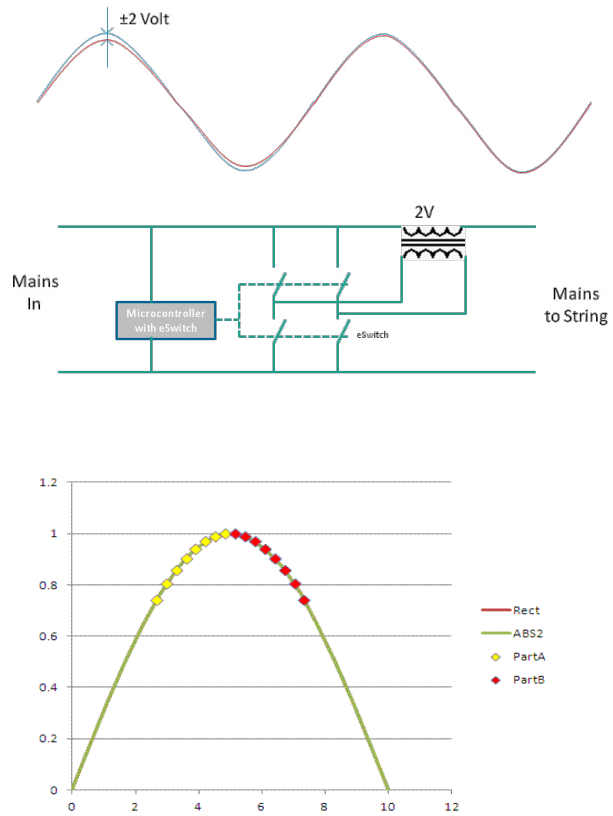


SiteWise

Area lighting management system

The Technology - Coded Mains

- Our Signify patented technology used to dim the luminaire with SiteWise system:
 - Signify patented communication technology Coded Mains is an innovative way of communicating dimming signals over a parking on power electrical wiring to many luminaires, without disruption other powered devices on the line.
 - A transmitter in the SiteWise dimming cabinet (option CME) sends a coded signal over the neutral wiring, which consists of a low communication frequency (150 to 180Hz) with small voltage pulse that can reach several more than one mile with a low power factor, no EMC issues and no wireless communication (WIFI etc.) disturbance on site. Coded Mains is similar to “phase-cut dimming” but without the limitations.
 - Our Signify luminaire equipped with SiteWise receiver (option SW) decode the Coded Mains signal and control the dimming on 0-10V or DALI LED drivers. An override input is also available for luminaire motion sensors.



Code compliance

- SiteWise can comply with the controls strategies and meets the lighting power allowances in the relevant codes required for:

Parking lot applications	ASHRAE 90.1-2013	CAT Title 24 2016
Outdoor astronomical time-clock to prevent "day-burners"	✓	✓
Occupancy-based bi-level motion sensor to reduce power by at least 30% after 15 minutes of vacancy OR	✓	n/a
Time-based part-night control to reduce power by at least 30% between 12 midnight and 6 AM	✓	n/a
Automatic schedule control for all installed outdoor luminaires	n/a	✓
Automatic schedule control to automatically turn lights off	n/a	✓
Auto-on occupancy-based bi-level motion sensors to reduce power by 40-90% (applies to pole-mounted 24ft or less)	n/a	✓
Code prescribed site-lighting power densities supported	✓	✓

SiteWise

Area lighting management system

Marketing and references

• Available material on website and e-catalog:

SiteWise System Guide

SiteWise Quick Start Guide

SiteWise Dimming Panel Instructions (Including panels wiring diagrams)

SiteWise Dimming Panel Data Sheet

SiteWise Luminaire Specification Sheet

SiteWise Made Easy & ROI Calculator

SiteWise Div 26 **NEW!**

SiteWise System Overview **NEW!**

Website:

<http://www.lightingproducts.signify.com/our-brands/philips-controls/sitewise-area-lighting-management-system.html>

E-catalog

<http://www.usa.lighting.philips.com/products/product-highlights/sitewise>

The information presented in this document is not intended as any commercial offer and does not form part of any quotation or contract.

