

MASTER LEDtube EM/ Mains T8

MAS LEDtube 1050mm 14W865 T8 TW

The Philips MASTER LEDtube integrates a LED light source into a traditional fluorescent form factor. Its unique design creates a perfectly uniform visual appearance, which cannot be distinguished from traditional fluorescent. These T8 LED tubes are the right choice for absolute performance and are designed to stand up to everyday conditions. Unparalleled savings thanks to low energy consumption and an exceptionally long lifetime ensure this tube masters every demanding application.

Warnings and Safety

- NOTE: The overall energy efficiency and light distribution of any installation that uses these lamps will be determined by the design of the installation.

Product data

General Information	
Cap-Base	G13 [Medium Bi-Pin Fluorescent]
Nominal lifetime	50,000 hour(s)
Switching Cycle	200,000
Lighting Technology	LED
EU RoHS compliant	Yes

Light Technical	
Color Code	865 [CCT of 6500K]
Beam Angle (Nom)	160 degree(s)
Luminous Flux	2,300 lumen
Color Designation	Cool Daylight
Correlated Color Temperature (Nom)	6500 K
Luminous Efficacy (rated) (Nom)	164 lm/W

Color Consistency	<6
Color rendering index (CRI)	80
LLMF At End Of Nominal Lifetime (Nom)	70 %

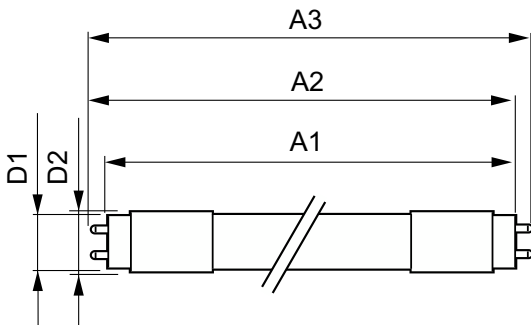
Operating and Electrical	
Input Frequency	50 to 60 Hz
Power Consumption	14 W
Wattage Equivalent	38 W
Starting Time (Nom)	0.5 s
Warm-up time to 60% light	0.5 s
Power Factor (Fraction)	0.9
Voltage (Nom)	100-277 V

MASTER LEDtube EM/Mains T8

Temperature	
Ambient temperature range	-20 to +45 °C
T-Case Maximum (Nom)	52 °C
Controls and Dimming	
Dimmable	No
Mechanical and Housing	
Bulb Finish	Frosted
Bulb Material	Plastic
Product Length	1,100 mm
Bulb Shape	Tube, double-ended
Approval and Application	
Energy Saving Product	Yes

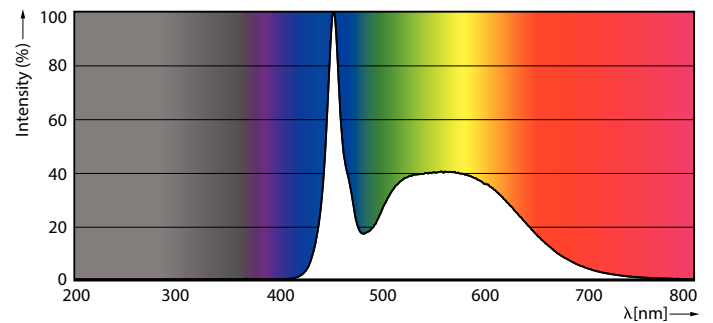
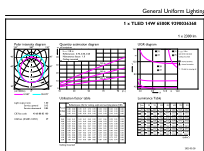
Approval Marks	RoHS compliance
Product Data	
Full product code	872016919473100
Order product name	MAS LEDtube 1050mm 14W865 T8 TW
Order code	929003636808
Numerator - Quantity Per Pack	1
Numerator - Packs per outer box	20
Material Nr. (12NC)	929003636808
Full product name	MAS LEDtube 1050mm 14W865 T8 TW
EAN/UPC - Case	8720169194748
EAN/UPC - Product/Case	8720169194731

Dimensional drawing



Product	D1	D2	A1	A2	A3
MAS LEDtube 1050mm 14W865 T8 TW	25.6 mm	28 mm	1,046 mm	1,053 mm	1,060 mm

Photometric data

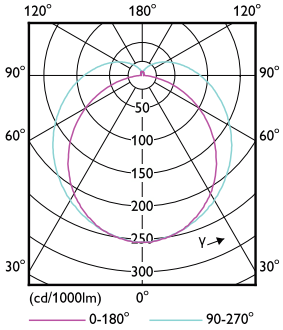


General uniform lighting - MAS LEDtube 1050mm 14W865 T8 TW

Spectral Power Distribution Colour - MAS LEDtube 1050mm 14W865 T8 TW

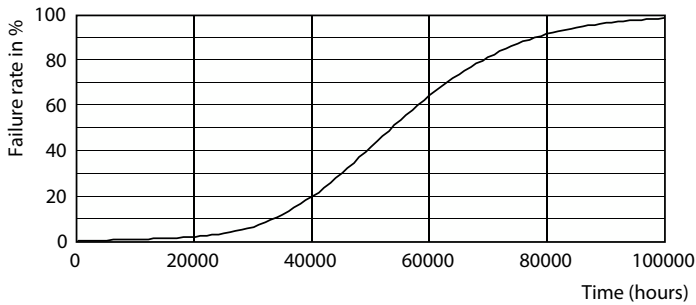
MASTER LEDtube EM/Mains T8

Photometric data

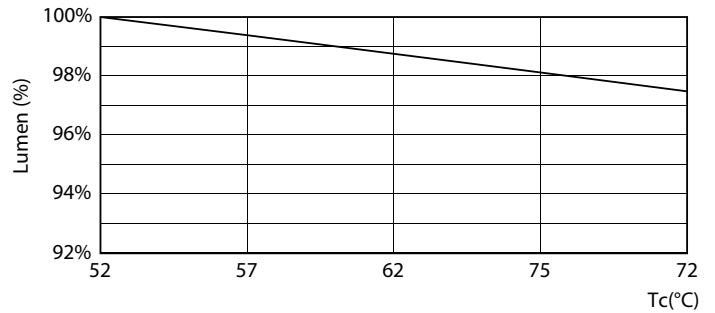


Light Distribution Diagram - MAS LEDtube 1050mm 14W865 T8 TW

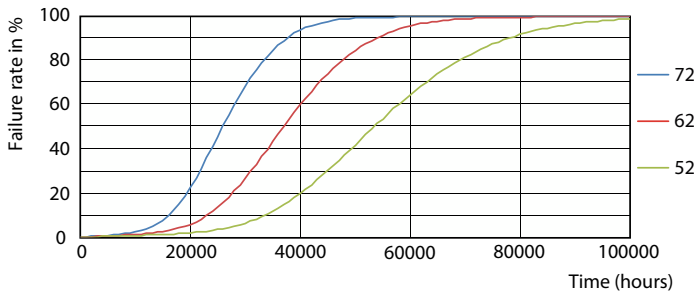
Lifetime



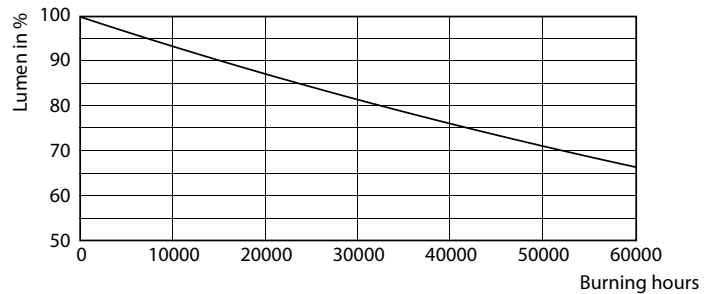
Life Expectancy Diagram - MAS LEDtube 1050mm 14W865 T8 TW



Lumen Maintenance Diagram - MAS LEDtube 1050mm 14W865 T8 TW



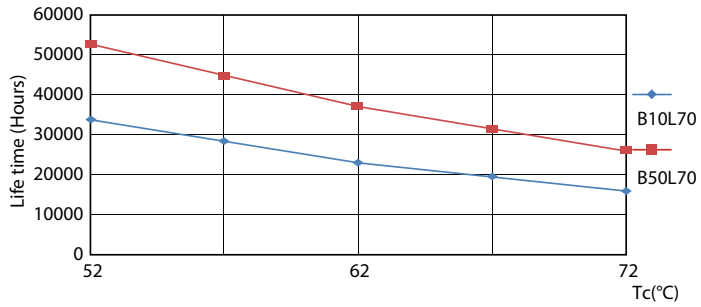
Life Expectancy Diagram - MAS LEDtube 1050mm 14W865 T8 TW



Lumen Maintenance Diagram - MAS LEDtube 1050mm 14W865 T8 TW

MASTER LEDtube EM/Mains T8

Lifetime



Life Expectancy Diagram - MAS LEDtube 1050mm 14W865 T8 TW

