



# MASTER LEDtube EM/ Mains T8

## MAS LEDtube 1200mm HO 14W830 T8

The Philips MASTER LEDtube integrates a LED light source into a traditional fluorescent form factor. Its unique design creates a perfectly uniform visual appearance which cannot be distinguished from traditional fluorescent. This product is the ideal solution for up lighting in general lighting applications.

### Warnings and Safety

- 
- 

### Product data

General Information	
Cap-Base	G13 [Medium Bi-Pin Fluorescent]
Nominal lifetime	60,000 hour(s)
Switching Cycle	200,000
Lighting Technology	LED
EU RoHS compliant	Yes
Light Technical	
Color Code	830 [CCT of 3000K]
Beam Angle (Nom)	190 degree(s)
Luminous Flux	2,000 lm
Color Designation	White (WH)
Correlated Color Temperature (Nom)	3000 K
Luminous Efficacy (rated) (Nom)	142.00 lm/W
Color Consistency	<6
Color rendering index (CRI)	80

LLMF At End Of Nominal Lifetime (Nom)	70 %
Operating and Electrical	
Line Frequency	50 to 60 Hz
Input Frequency	50 to 60 Hz
Power Consumption	14 W
Lamp Current (Nom)	70 mA
Starting Time (Nom)	0.5 s
Warm-up time to 60% light	0.5 s
Power Factor (Fraction)	0.9
Voltage (Nom)	220-240 V
Temperature	
Ambient temperature range	-20 °C to 45 °C
T-Case Maximum (Nom)	50 °C

# MASTER LEDtube EM/Mains T8

## Controls and Dimming

Dimmable	No
----------	----

## Mechanical and Housing

Bulb Finish	Frosted
Bulb Material	Plastic
Product Length	1,200 mm
Bulb Shape	T8

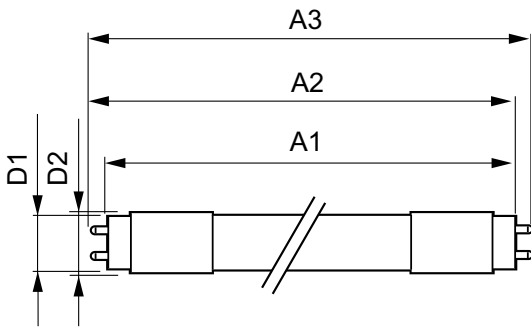
## Approval and Application

Energy Saving Product	Yes
Approval Marks	RoHS compliance KEMA Keur certificate

## Product Data

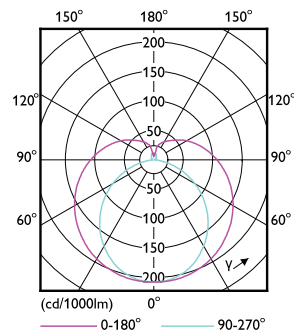
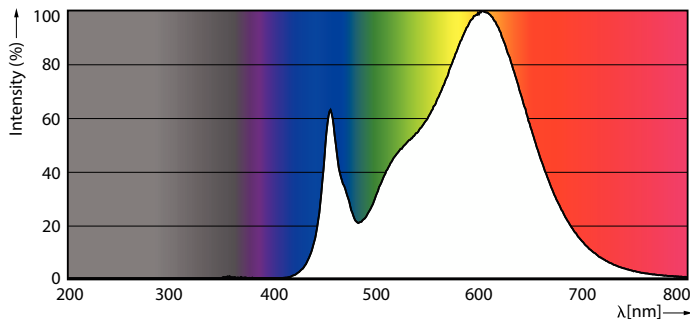
Order product name	MAS LEDtube 1200mm HO 14W830 T8
Full product name	MAS LEDtube 1200mm HO 14W830 T8
Full product code	871951446846700
Order code	929003556008
Material Nr. (12NC)	929003556008
Numerator - Quantity Per Pack	1
EAN/UPC - Product/Case	8719514468467
Numerator - Packs per outer box	20
EAN/UPC - Case	8719514468474

## Dimensional drawing



Product	D1	D2	A1	A2	A3
MAS LEDtube 1200mm HO 14W830 T8	25.8 mm	28 mm	1,198.2 mm	1,205.3 mm	1,212.4 mm

## Photometric data

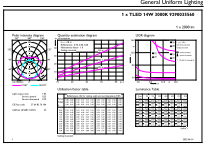


Spectral Power Distribution Colour - MAS LEDtube 1200mm HO 14W830 T8

Light Distribution Diagram - MAS LEDtube 1200mm HO 14W830 T8

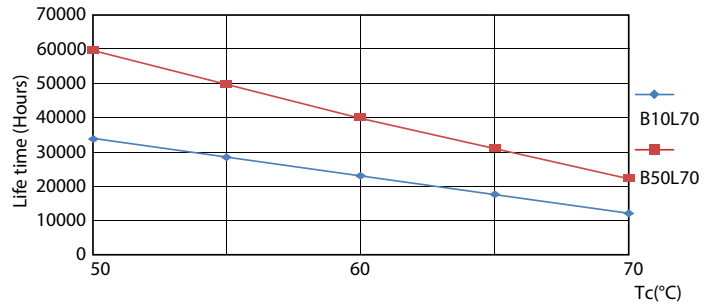
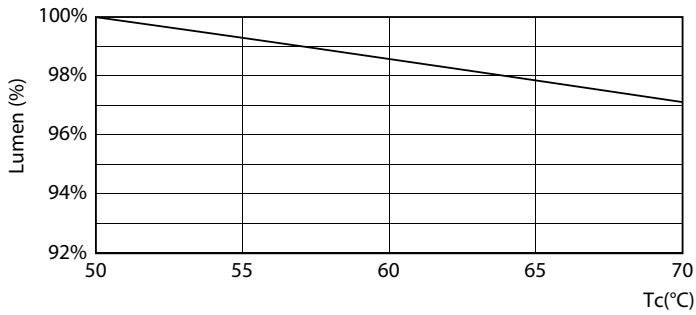
# MASTER LEDtube EM/Mains T8

## Photometric data



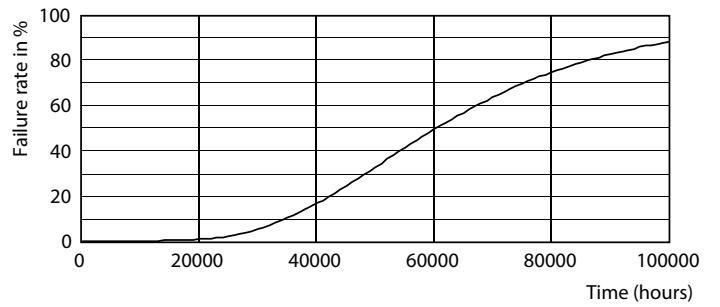
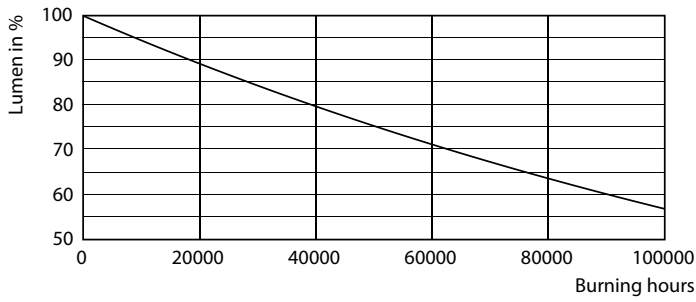
General uniform lighting - MAS LEDtube 1200mm HO 14W830 T8

## Lifetime



Lumen Maintenance Diagram - MAS LEDtube 1200mm HO 14W830 T8

Life Expectancy Diagram - MAS LEDtube 1200mm HO 14W830 T8

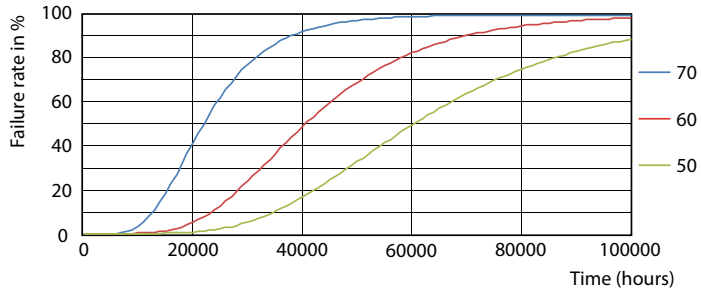


Lumen Maintenance Diagram - MAS LEDtube 1200mm HO 14W830 T8

Life Expectancy Diagram - MAS LEDtube 1200mm HO 14W830 T8

# MASTER LEDtube EM/Mains T8

## Lifetime



Life Expectancy Diagram - MAS LEDtube 1200mm HO 14W830 T8

