

MASTER LEDtube EM/ Mains T8

MAS LEDtube STD 1200mm 10.5W865 T8

The Philips MASTER LEDtube integrates a LED light source into a traditional fluorescent form factor. Its unique design creates a perfectly uniform visual appearance, which cannot be distinguished from traditional fluorescent. These T8 LED tubes are the right choice for absolute performance and are designed to stand up to everyday conditions. Unparalleled savings thanks to low energy consumption and an exceptionally long lifetime ensure this tube masters every demanding application.

Warnings and Safety

- NOTE: The overall energy efficiency and light distribution of any installation that uses these lamps will be determined by the design of the installation.

Product data

General Information	
Cap-Base	G13 [Medium Bi-Pin Fluorescent]
Nominal lifetime	60,000 hour(s)
Switching Cycle	200,000
Lighting Technology	LED

Light Technical	
Color Code	865 [CCT of 6500K]
Beam Angle (Nom)	190 degree(s)
Luminous Flux	1,600 lumen
Color Designation	Cool Daylight
Correlated Color Temperature (Nom)	6500 K
Luminous Efficacy (rated) (Nom)	152.00 lm/W
Color Consistency	<6

Color rendering index (CRI)	80
LLMF At End Of Nominal Lifetime (Nom)	70 %

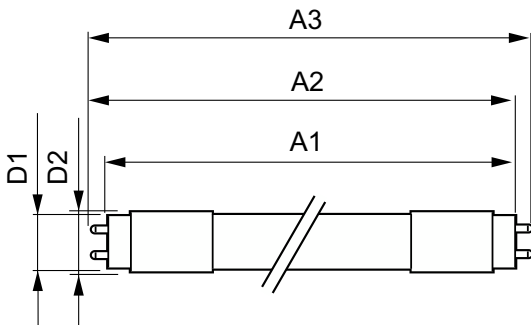
Operating and Electrical	
Line Frequency	50 to 60 Hz
Input Frequency	50 to 60 Hz
Power Consumption	10.5 W
Lamp Current (Nom)	53 mA
Starting Time (Nom)	0.5 s
Warm-up time to 60% light	0.5 s
Power Factor (Fraction)	0.9
Voltage (Nom)	220-240 V

MASTER LEDtube EM/Mains T8

Temperature	
Ambient temperature range	-20 °C to 45 °C
T-Case Maximum (Nom)	50 °C
Controls and Dimming	
Dimmable	No
Mechanical and Housing	
Bulb Finish	Frosted
Bulb Material	Plastic
Product Length	1,200 mm
Bulb Shape	Tube, double-ended
Approval and Application	
Energy Saving Product	Yes

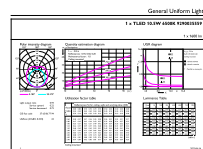
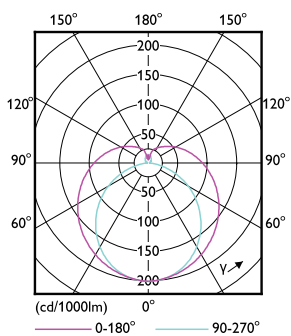
Approval Marks	RoHS compliance KEMA Keur certificate
EU RoHS compliant	Yes
Product Data	
Full product code	871951446844300
Order product name	MAS LEDtube STD 1200mm 10.5W865 T8
Order code	929003555908
Numerator - Quantity Per Pack	1
Numerator - Packs per outer box	20
Material number (12NC)	929003555908
Full product name	MAS LEDtube STD 1200mm 10.5W865 T8
EAN/UPC - Case	8719514468450

Dimensional drawing



Product	D1	D2	A1	A2	A3
MAS LEDtube STD 1200mm 10.5W865 T8	25.8 mm	28 mm	1,198.2 mm	1,205.3 mm	1,212.4 mm

Photometric data

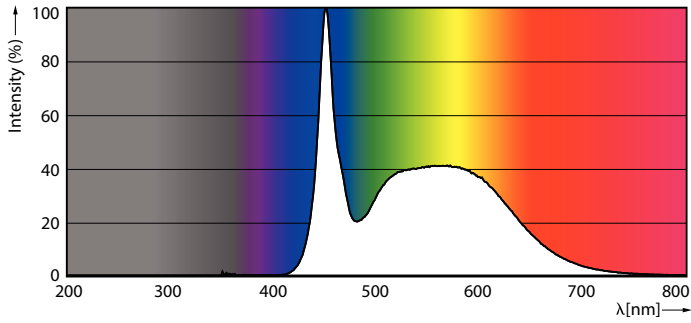


Light Distribution Diagram - MAS LEDtube STD 1200mm 10.5W865 T8

General uniform lighting - MAS LEDtube STD 1200mm 10.5W865 T8

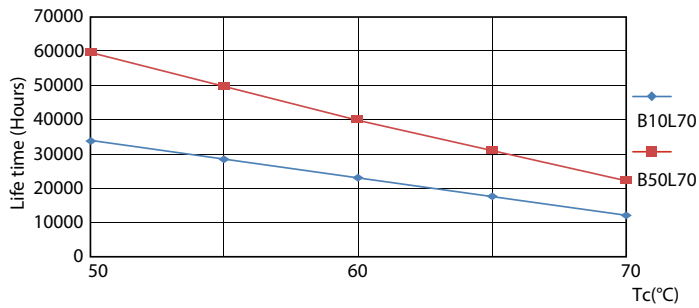
MASTER LEDtube EM/Mains T8

Photometric data

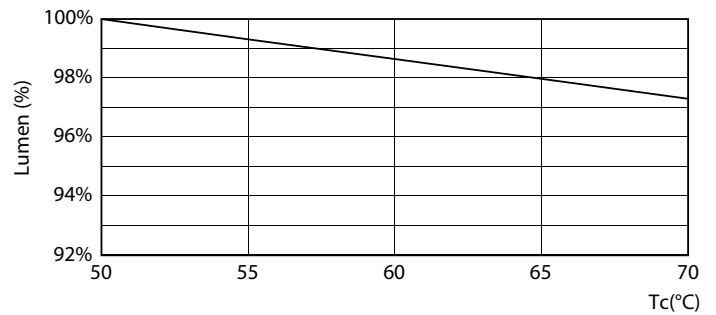


Spectral Power Distribution Colour - MAS LEDtube STD 1200mm 10.5W865 T8

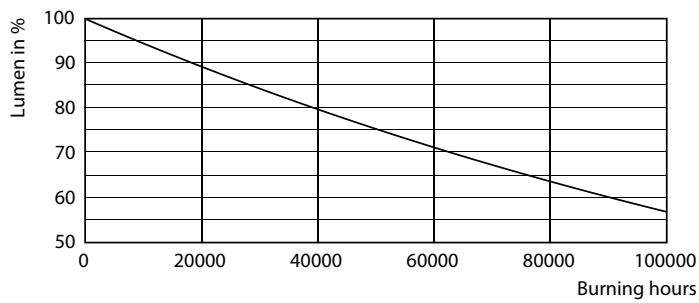
Lifetime



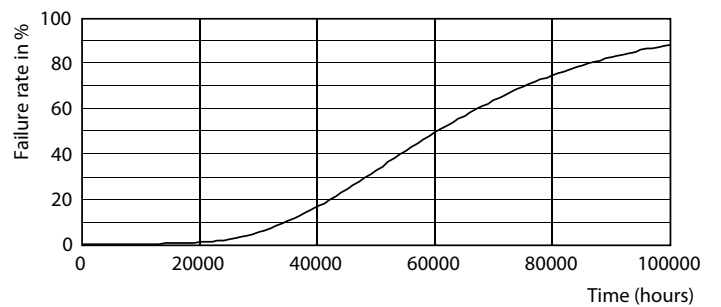
Life Expectancy Diagram - MAS LEDtube STD 1200mm 10.5W865 T8



Lumen Maintenance Diagram - MAS LEDtube STD 1200mm 10.5W865 T8



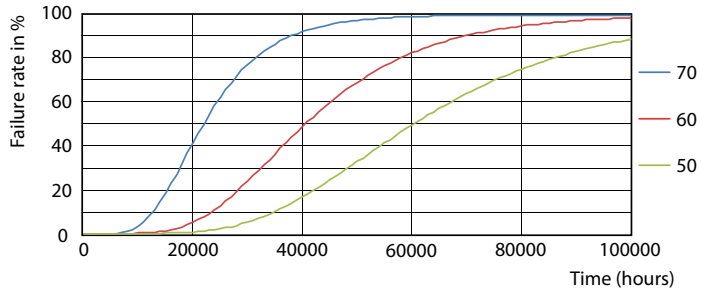
Lumen Maintenance Diagram - MAS LEDtube STD 1200mm 10.5W865 T8



Life Expectancy Diagram - MAS LEDtube STD 1200mm 10.5W865 T8

MASTER LEDtube EM/Mains T8

Lifetime



Life Expectancy Diagram - MAS LEDtube STD 1200mm 10.5W865 T8

