



CorePro LEDtube EM/ Mains T8



CorePro LEDtube 1500mm 20W 865 T8

Philips CorePro LEDtubes are the quick and easy way to replace T8 fluorescent or other LED tubes with a fast pack back time. Not only does the Core range of LEDtubes require a low initial investment, but LED energy efficiency also delivers instant savings that you can bank on over a long and reliable lifetime. Plus, with the same lamp size and light distribution as fluorescent alternatives, you'll never know the difference. There are two ways to install these LED tubes: Rewire your existing fluorescent-based luminaires so the CorePro LEDtubes work directly on the Mains. Or simply change the fluorescent starter to an LED starter that can be used with your Electromagnetic ballasts.

Warnings and Safety

- NOTE: The overall energy efficiency and light distribution of any installation that uses these lamps will be determined by the design of the installation.
- Installation must be done according to the installation diagrams provided with the lamp or available online. Installation must be done by a certified professional.

Product data

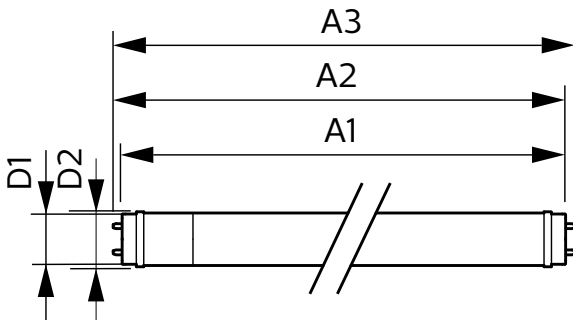
General information		Light technical	
Cap-Base	G13 [Medium Bi-Pin Fluorescent]	Color Code	865 [CCT of 6500K]
CE mark	Yes	Beam Angle (Nom)	240 °
EU RoHS compliant	Yes	Luminous Flux (Nom)	2200 lm
Nominal Lifetime (Nom)	30000 h	Color Designation	Cool Daylight
Switching Cycle	200000X	Correlated Color Temperature (Nom)	6500 K
Flux measurement reference	Sphere	Luminous Efficacy (rated) (Nom)	110 lm/W
Tier	CorePro	Color Consistency	<6
		Color Rendering Index (Nom)	80

CorePro LEDtube EM/Mains T8

LLMF At End Of Nominal Lifetime (Nom) 70 %	
Operating and electrical	
Input Frequency	50 to 60 Hz
Power (Nom)	20 W
Lamp Current (Nom)	105 mA
Wattage Equivalent	58 W
Starting Time (Nom)	0.5 s
Warm Up Time to 60% Light (Nom)	0.5 s
Power Factor (Nom)	0.9
Voltage (Nom)	220-240 V
Temperature	
T-Ambient (Max)	45 °C
T-Ambient (Min)	-20 °C
T-Storage (Max)	65 °C
T-Storage (Min)	-40 °C
T-Case Maximum (Nom)	60 °C
Controls and dimming	
Dimmable	No
Mechanical and housing	
Bulb Finish	Frosted

Bulb Material	Glass
Product Length	1500 mm
Bulb Shape	Tube, double-ended
Approval and application	
Energy Efficiency Class	E
Energy Saving Product	Yes
Approval Marks	RoHS compliance CE marking KEMA Keur certificate
Energy Consumption kWh/1000 h	20 kWh
EPREL Registration Number	1183846
Product data	
Full product code	871951445983000
Order product name	CorePro LEDtube 1500mm 20W 865 T8
EAN/UPC - Product	8719514459830
Order code	929003547502
Numerator - Quantity Per Pack	1
Numerator - Packs per outer box	20
Material Nr. (12NC)	929003547502
Net Weight (Piece)	0.220 kg

Dimensional drawing

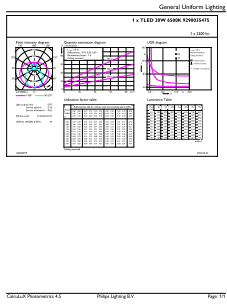


CorePro LEDtube 1500mm 20W 865 T8

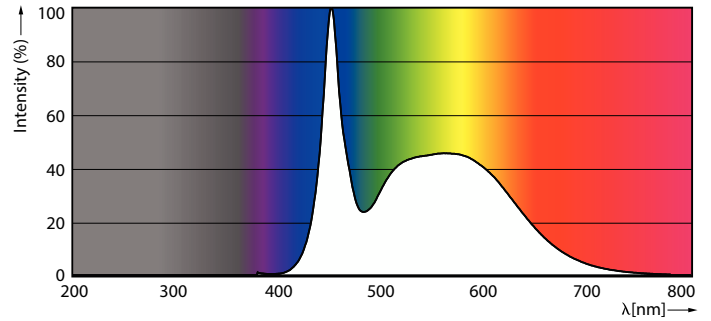
Product	D1	D2	A1	A2	A3
CorePro LEDtube 1500mm 20W 865 T8					

CorePro LEDtube EM/Mains T8

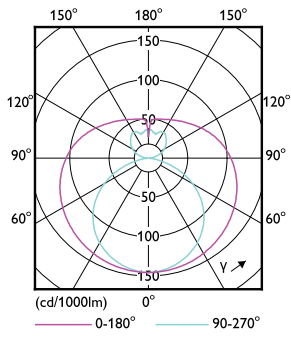
Photometric data



General uniform lighting

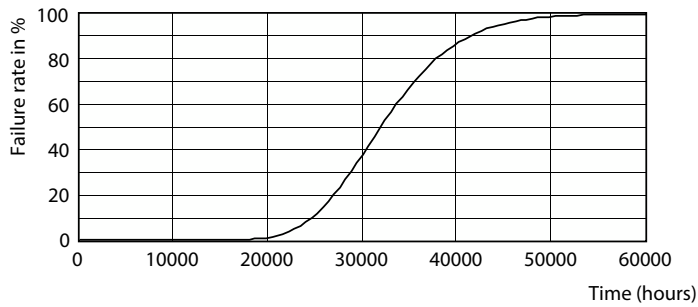


Spectral Power Distribution Colour

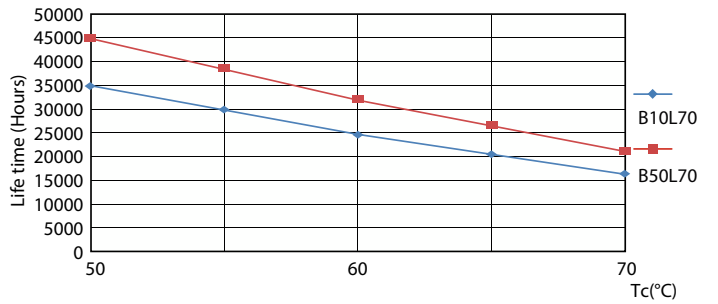


Light Distribution Diagram

Lifetime



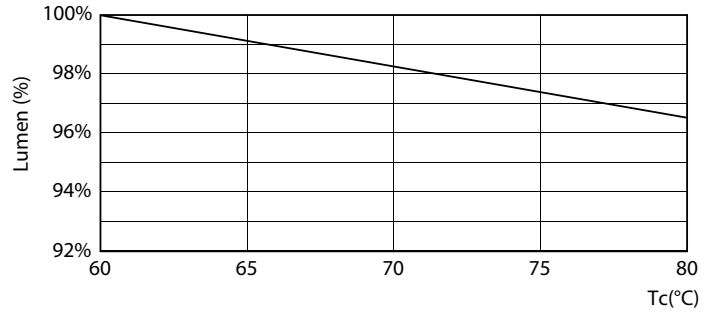
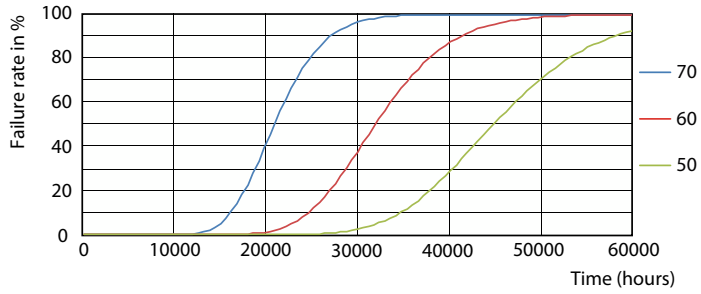
Life Expectancy Diagram



LifetimeVsTc

CorePro LEDtube EM/Mains T8

Lifetime



FailureRate

LumenVsTc



Lumen Maintenance Diagram

