



CorePro LEDtube EM/ Mains T8

CorePro LEDtube 600mm 8W 865 T8 CL

Philips CorePro LEDtubes are the quick and easy way to replace T8 fluorescent or other LED tubes with a fast pay back time. Not only does the Core range of LEDtubes require a low initial investment, but LED energy efficiency also delivers instant savings that you can bank on over a long and reliable lifetime. Plus, with the same lamp size and light distribution as fluorescent alternatives, you'll never know the difference. There are two ways to install these LED tubes: Rewire your existing fluorescent-based luminaires so the CorePro LEDtubes work directly on the Mains. Or simply change the fluorescent starter to an LED starter that can be used with your Electromagnetic ballasts.

Warnings and Safety

- NOTE: The overall energy efficiency and light distribution of any installation that uses these lamps will be determined by the design of the installation.
- Installation must be done according to the installation diagrams provided with the lamp or available online. Installation must be done by a certified professional.

Product data

General information			
Cap-Base	G13 [Medium Bi-Pin Fluorescent]	Beam Angle (Nom)	240 °
EU RoHS compliant	Yes	Luminous Flux (Nom)	800 lm
Nominal Lifetime (Nom)	30000 h	Color Designation	Cool Daylight
Switching Cycle	200000X	Correlated Color Temperature (Nom)	6500 K
Technical Type	LEDTECH-LOV	Luminous Efficacy (rated) (Nom)	100.00 lm/W
Flux measurement reference	Sphere	Color Consistency	<6
		Color Rendering Index (Nom)	80
		LLMF At End Of Nominal Lifetime (Nom)	70 %
Light technical			
Color Code	865 [CCT of 6500K]		

CorePro LEDtube EM/Mains T8

Operating and electrical

Input Frequency	50 to 60 Hz
Power (Nom)	8 W
Lamp Current (Nom)	46 mA
Starting Time (Nom)	0.5 s
Warm Up Time to 60% Light (Nom)	0.5 s
Power Factor (Nom)	0.9
Voltage (Nom)	220-240 V

Temperature

T-Ambient (Max)	45 °C
T-Ambient (Min)	-20 °C
T-Storage (Max)	65 °C
T-Storage (Min)	-40 °C
T-Case Maximum (Nom)	50 °C

Controls and dimming

Dimmable	No
----------	----

Mechanical and housing

Bulb Finish	Frosted
-------------	---------

Bulb Material	Glass
Product Length	600 mm
Bulb Shape	Tube, double-ended

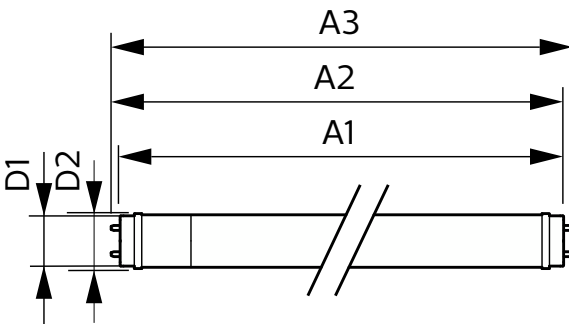
Approval and application

Energy Saving Product	Yes
Approval Marks	RoHS compliance CE marking KEMA Keur certificate
Energy Consumption kWh/1000 h	8 kWh

Product data

Full product code	871951445979300
Order product name	CorePro LEDtube 600mm 8W 865 T8 CL
EAN/UPC - Product	8719514459793
Order code	929003547362
Numerator - Quantity Per Pack	1
Numerator - Packs per outer box	20
Material Nr. (12NC)	929003547362

Dimensional drawing

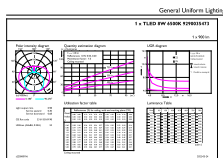


CorePro LEDtube 600mm 8W 865 T8 CL

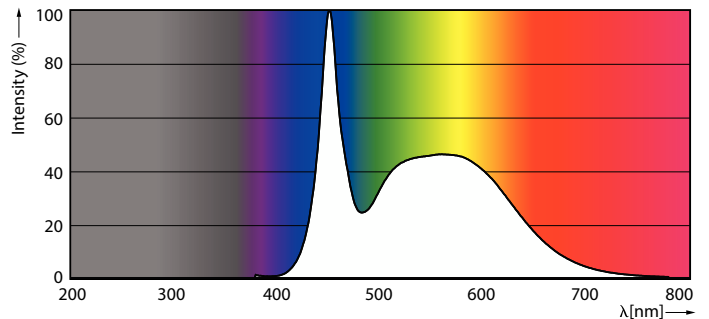
Product

CorePro LEDtube 600mm 8W 865 T8 CL

Photometric data



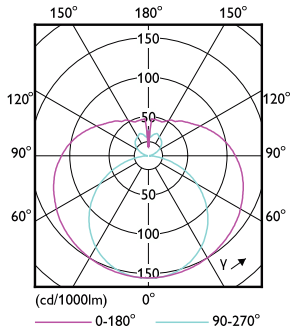
General uniform lighting



Spectral Power Distribution Colour

CorePro LEDtube EM/Mains T8

Photometric data

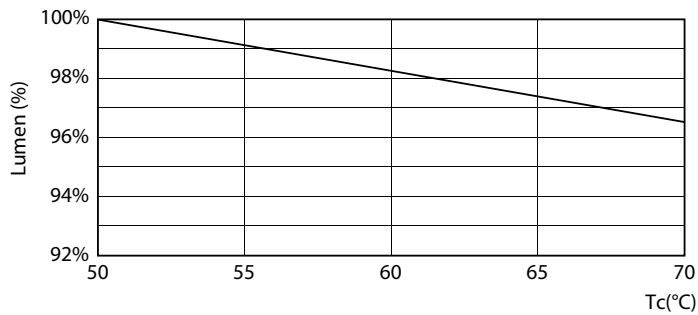


Light Distribution Diagram

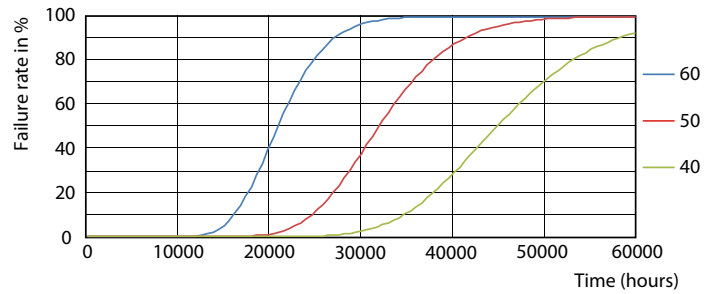
Lifetime



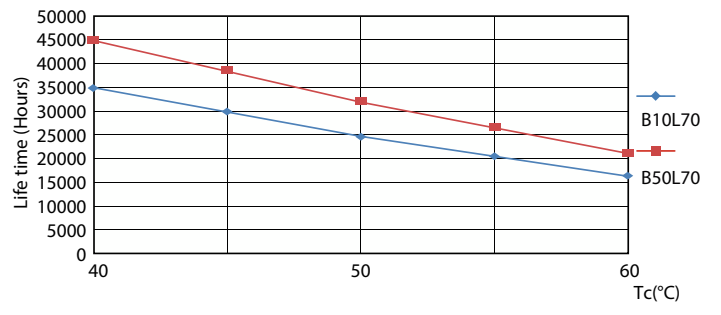
Life Expectancy Diagram



LumenVsTc



FailureRate



LifetimeVsTc

CorePro LEDtube EM/Mains T8

Lifetime



Lumen Maintenance Diagram

