



# CorePro LEDtube EM/ Mains T8

## CorePro LEDtube 1200mm 16W 865 VWV T8

Philips CorePro LEDtubes are the quick and easy way to replace T8 fluorescent or other LED tubes with a fast pack back time. Not only does the Core range of LEDtubes require a low initial investment, but LED energy efficiency also delivers instant savings that you can bank on over a long and reliable lifetime. Plus, with the same lamp size and light distribution as fluorescent alternatives, you'll never know the difference. There are two ways to install these LED tubes: Rewire your existing fluorescent-based luminaires so the CorePro LEDtubes work directly on the Mains. Or simply change the fluorescent starter to an LED starter that can be used with your Electromagnetic ballasts.

### Warnings and Safety

- NOTE: The overall energy efficiency and light distribution of any installation that uses these lamps will be determined by the design of the installation.
- Installation must be done according to the installation diagrams provided with the lamp or available online. Installation must be done by a certified professional.

### Product data

General Information		Color Designation	
Cap-Base	G13 [Medium Bi-Pin Fluorescent]	Color Designation	Cool Daylight
Nominal lifetime	30,000 hour(s)	Correlated Color Temperature (Nom)	6500 K
Switching Cycle	200,000	Luminous Efficacy (rated) (Nom)	100.00 lm/W
Lighting Technology	LED	Color Consistency	<6
		Color rendering index (CRI)	80
		LLMF At End Of Nominal Lifetime (Nom)	70 %
Light Technical		Operating and Electrical	
Color Code	865 [CCT of 6500K]	Line Frequency	50 to 60 Hz
Beam Angle (Nom)	240 degree(s)	Input Frequency	50 to 60 Hz
Luminous Flux	1,600 lumen		

# CorePro LEDtube EM/Mains T8

Power Consumption	16 W
Starting Time (Nom)	0.5 s
Warm-up time to 60% light	0.5 s
Power Factor (Fraction)	0.9
Voltage (Nom)	100-277 V

## Temperature

Ambient temperature range	-20 °C to 45 °C
T-Case Maximum (Nom)	60 °C

## Controls and Dimming

Dimmable	No
----------	----

## Mechanical and Housing

Bulb Finish	Frosted
Bulb Material	Glass
Product Length	1,200 mm
Bulb Shape	Tube, double-ended

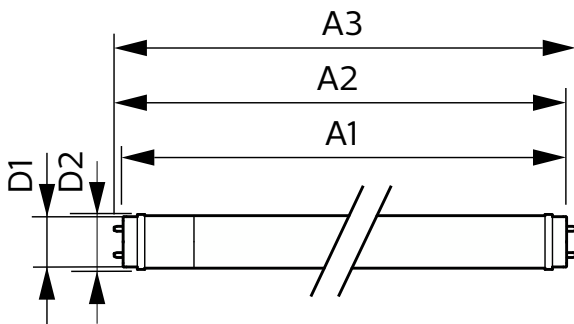
## Approval and Application

Energy Saving Product	Yes
Approval Marks	RoHS compliance KEMA Keur certificate
EU RoHS compliant	Yes

## Product Data

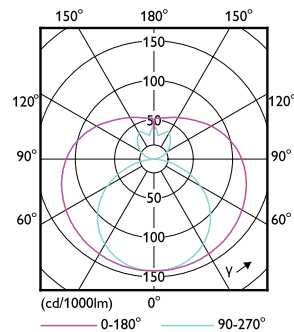
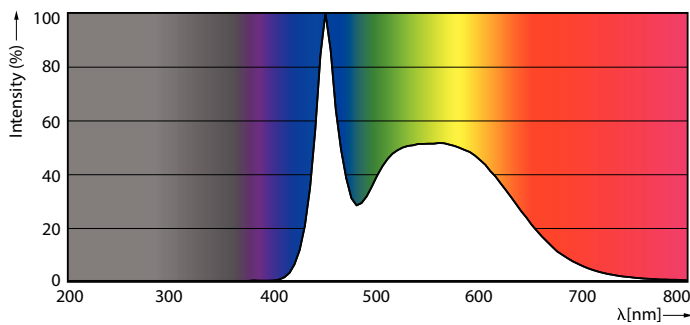
Full product code	871951445308100
Order product name	CorePro LEDtube 1200mm 16W 865 VWV T8
Order code	929003534711
Numerator - Quantity Per Pack	1
Numerator - Packs per outer box	20
Material number (12NC)	929003534711
Full product name	CorePro LEDtube 1200mm 16W 865 VWV T8
EAN/UPC - Case	8719514453098

## Dimensional drawing



Product	D1	D2	A1	A2	A3
CorePro LEDtube 1200mm 16W 865 VWV T8	25.7 mm	28 mm	1,198 mm	1,205 mm	1,212 mm

## Photometric data

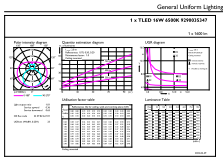


Spectral Power Distribution Colour - CorePro LEDtube 1200mm 16W 865 VWV T8

Light Distribution Diagram - CorePro LEDtube 1200mm 16W 865 VWV T8

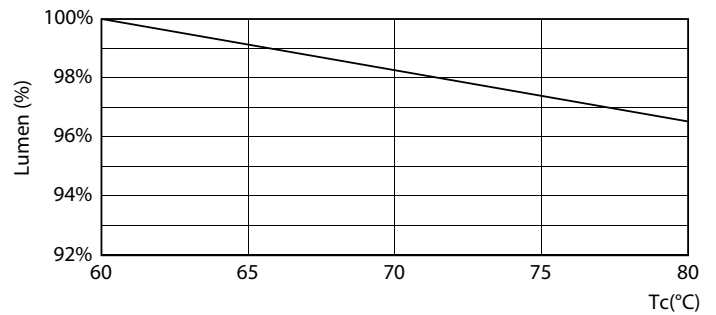
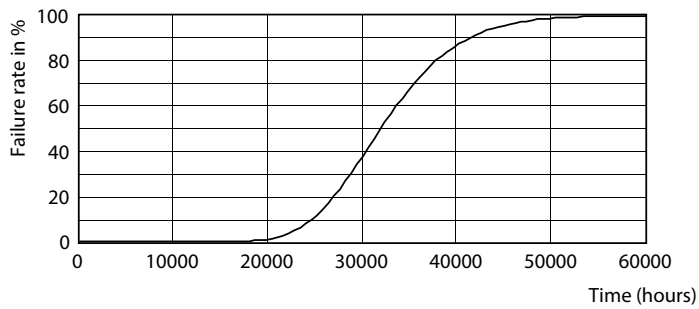
# CorePro LEDtube EM/Mains T8

## Photometric data



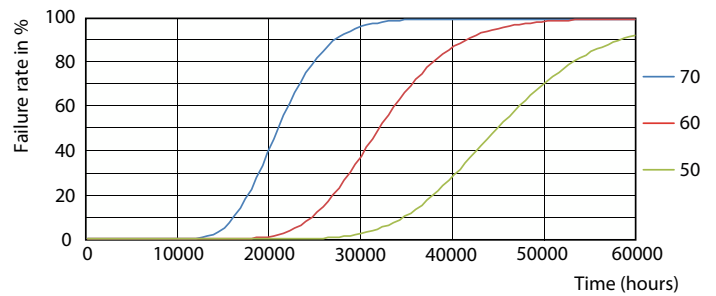
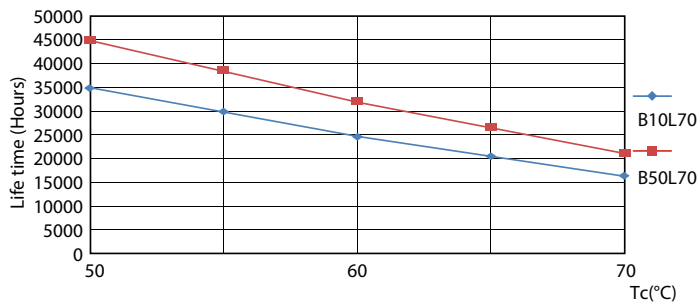
General uniform lighting - CorePro LEDtube 1200mm 16W 865 VVW T8

## Lifetime



Life Expectancy Diagram - CorePro LEDtube 1200mm 16W 865 VVW T8

Lumen Maintenance Diagram - CorePro LEDtube 1200mm 16W 865 VVW T8

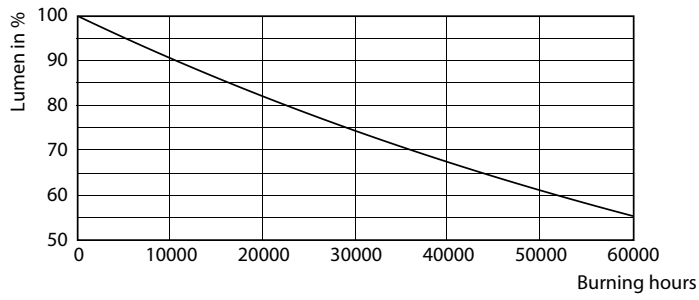


Life Expectancy Diagram - CorePro LEDtube 1200mm 16W 865 VVW T8

Life Expectancy Diagram - CorePro LEDtube 1200mm 16W 865 VVW T8

# CorePro LEDtube EM/Mains T8

## Lifetime



Lumen Maintenance Diagram - CorePro LEDtube 1200mm 16W 865 VWV T8

