

CorePro MainsFit (UL Type-B) T8

14.5T8/COR/48-850/MF21/G/DIM 25/1

The CorePro MainsFit (UL Type B) lamps are designed to be the perfect retrofit solution to move from traditional fluorescent lamps to energy saving LEDs. This ballast bypass lamp has everything needed built into the lamp with proven energy savings, long life (up to 50k hours), surge suppression and industry leading safety features. All lamps in the CorePro MainsFit family are double-ended to help simplify the installation. In addition, all lamps meet the Philips standards for light quality so that end users will be in a comfortable environment regardless of the CorePro MainsFit lamp type.

Product data

General Information	
Cap-Base	G13 [Medium Bi-Pin Fluorescent]
Nominal lifetime	50,000 hour(s)
Switching Cycle	50,000
Lighting Technology	LED
EU RoHS compliant	Yes

Light Technical	
Color Code	850 [CCT of 5000K]
Beam Angle (Nom)	240 degree(s)
Luminous Flux	2,100 lumen
Color Designation	Daylight
Correlated Color Temperature (Nom)	5000 K
Luminous Efficacy (rated) (Nom)	144.00 lm/W
Color Consistency	<5
Color rendering index (CRI)	80

LLMF At End Of Nominal Lifetime (Nom) 70 %	
--	--

Operating and Electrical	
Line Frequency	50 to 60 Hz
Input Frequency	50 to 60 Hz
Power Consumption	14.5 W
Starting Time (Nom)	0.5 s
Warm-up time to 60% light	0.5 s
Power Factor (Fraction)	0.9
Voltage (Nom)	120-277 V

Temperature	
Ambient temperature range	-20 °C to 45 °C
T-Case Maximum (Nom)	70 °C

CorePro MainsFit (UL Type-B) T8

Controls and Dimming

Dimmable Only with specific dimmers

Mechanical and Housing

Bulb Finish Frosted
Bulb Material Glass
Product Length 1,200 mm
Bulb Shape Tube, double-ended

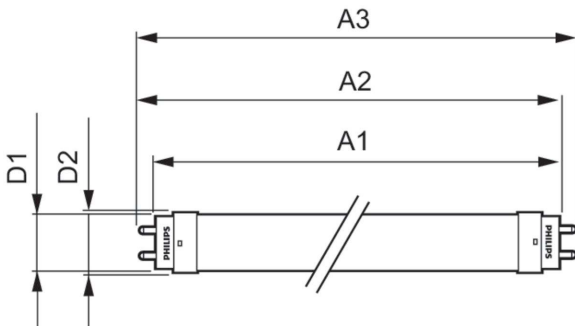
Approval and Application

Energy Saving Product Yes
Approval Marks RoHS compliance UL certificate DLC compliance

Product Data

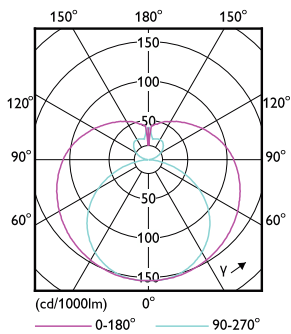
Order product name 14.5T8/COR/48-850/MF21/G/DIM 25/1
Order code 929003524904
Numerator - Quantity Per Pack 1
Numerator - Packs per outer box 25
Material Nr. (12NC) 929003524904
Full product name 14.5T8/COR/48-850/MF21/G/DIM 25/1
EAN/UPC - Case 50046677579437
EAN/UPC - Product/Case 046677579432

Dimensional drawing

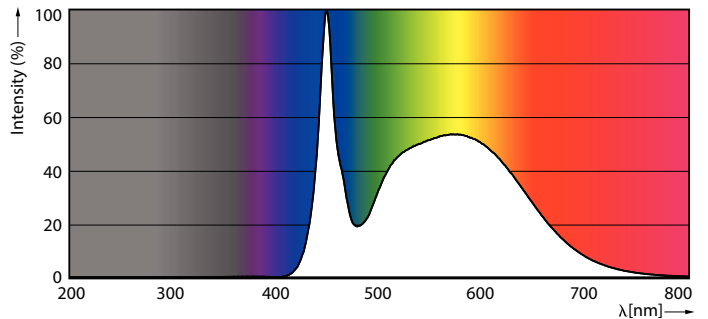


Product	D1	D2	A1	A2	A3
14.5T8/COR/48-850/MF21/G/DIM 25/1	25.7 mm	28 mm	1,198.2 mm	1,205.3 mm	1,212.4 mm

Photometric data



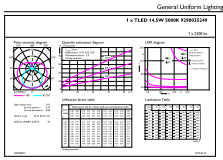
Light Distribution Diagram - 14.5T8/COR/48-850/MF21/G/DIM 25/1



Spectral Power Distribution Colour - 14.5T8/COR/48-850/MF21/G/DIM 25/1

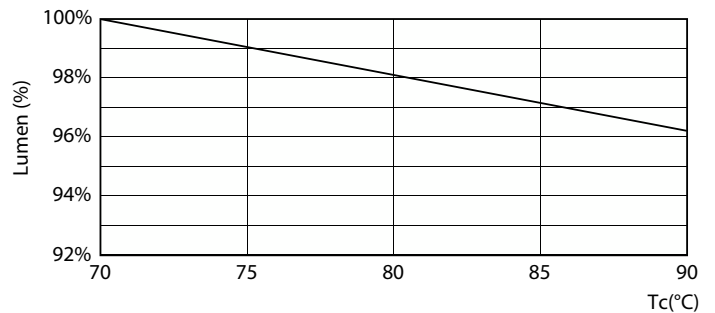
CorePro MainsFit (UL Type-B) T8

Photometric data



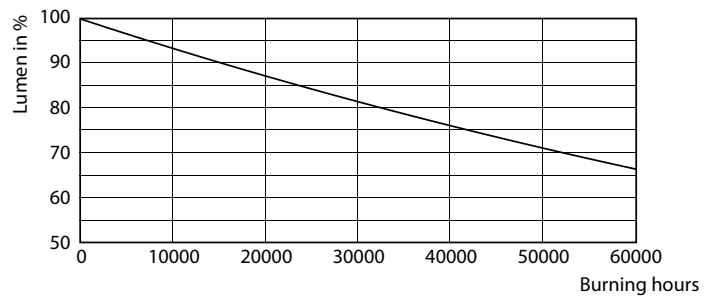
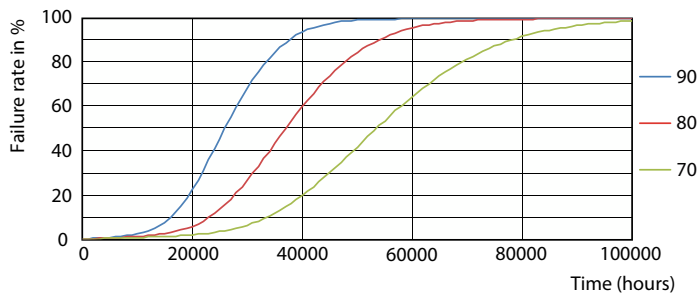
General uniform lighting - 14.5T8/COR/48-850/MF21/G/DIM 25/1

Lifetime



Life Expectancy Diagram - 14.5T8/COR/48-850/MF21/G/DIM 25/1

Lumen Maintenance Diagram - 14.5T8/COR/48-850/MF21/G/DIM 25/1



Life Expectancy Diagram - 14.5T8/COR/48-850/MF21/G/DIM 25/1

Lumen Maintenance Diagram - 14.5T8/COR/48-850/MF21/G/DIM 25/1

CorePro MainsFit (UL Type-B) T8

Lifetime



Life Expectancy Diagram - 14.5T8/COR/48-850/MF21/G/DIM 25/1

