



# CorePro MainsFit (UL Type-B) T8

## 14.5T8/COR/48-835/MF20/G/DIM 25/1

The CorePro MainsFit (UL Type B) lamps are designed to be the perfect retrofit solution to move from traditional fluorescent lamps to energy saving LEDs. This ballast bypass lamp has everything needed built into the lamp with proven energy savings, long life (up to 50k hours), surge suppression and industry leading safety features. All lamps in the CorePro MainsFit family are double-ended to help simplify the installation. In addition, all lamps meet the Philips standards for light quality so that end users will be in a comfortable environment regardless of the CorePro MainsFit lamp type.

### Product data

General Information		LLMF At End Of Nominal Lifetime (Nom) 70 %	
Cap-Base	G13 [Medium Bi-Pin Fluorescent]		
Nominal lifetime	50,000 hour(s)		
Switching Cycle	50,000		
Lighting Technology	LED		
EU RoHS compliant	Yes		
Light Technical		Operating and Electrical	
Color Code	835 [CCT of 3500K]	Line Frequency	50 to 60 Hz
Beam Angle (Nom)	240 degree(s)	Input Frequency	50 to 60 Hz
Luminous Flux	2,000 lumen	Power Consumption	14.5 W
Color Designation	White (WH)	Starting Time (Nom)	0.5 s
Correlated Color Temperature (Nom)	3500 K	Warm-up time to 60% light	0.5 s
Luminous Efficacy (rated) (Nom)	137.00 lm/W	Power Factor (Fraction)	0.9
Color Consistency	6SCDM	Voltage (Nom)	120-277 V
Color rendering index (CRI)	80		
		Temperature	
		Ambient temperature range	-20 °C to 45 °C
		T-Case Maximum (Nom)	70 °C

# CorePro MainsFit (UL Type-B) T8

## Controls and Dimming

**Dimmable** Only with specific dimmers

## Mechanical and Housing

**Bulb Finish** Frosted  
**Bulb Material** Glass  
**Product Length** 1,200 mm  
**Bulb Shape** Tube, double-ended

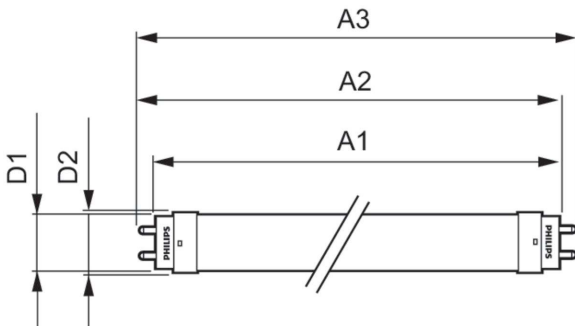
## Approval and Application

**Energy Saving Product** Yes  
**Approval Marks** RoHS compliance UL certificate DLC compliance

## Product Data

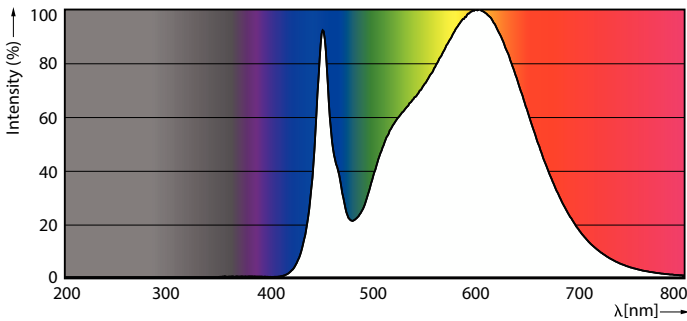
**Order product name** 14.5T8/COR/48-835/MF20/G/DIM 25/1  
**Order code** 929003524704  
**Numerator - Quantity Per Pack** 1  
**Numerator - Packs per outer box** 25  
**Material Nr. (12NC)** 929003524704  
**Full product name** 14.5T8/COR/48-835/MF20/G/DIM 25/1  
**EAN/UPC - Case** 50046677579413  
**EAN/UPC - Product/Case** 046677579418

## Dimensional drawing

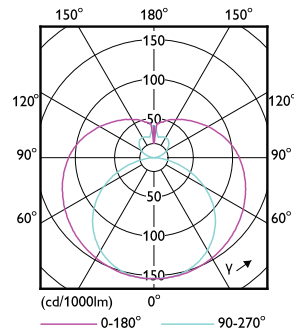


Product	D1	D2	A1	A2	A3
14.5T8/COR/48-835/MF20/G/DIM 25/1	25.7 mm	28 mm	1,198.2 mm	1,205.3 mm	1,212.4 mm

## Photometric data



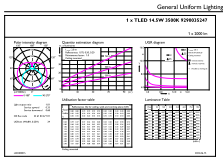
Spectral Power Distribution Colour - 14.5T8/COR/48-835/MF20/G/DIM 25/1



Light Distribution Diagram - 14.5T8/COR/48-835/MF20/G/DIM 25/1

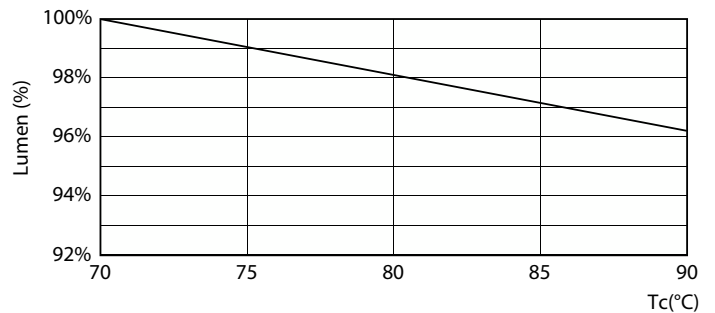
# CorePro MainsFit (UL Type-B) T8

## Photometric data



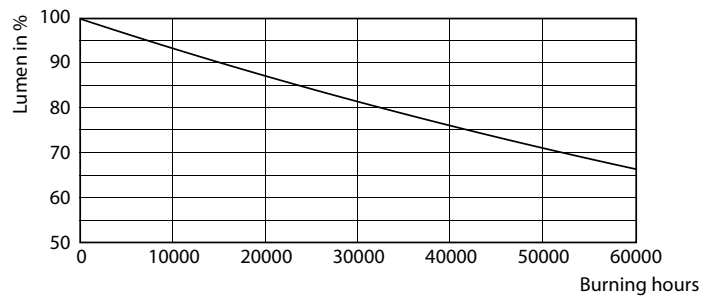
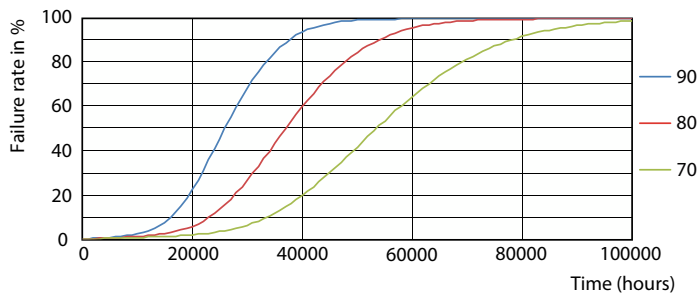
General uniform lighting - 14.5T8/COR/48-835/MF20/G/DIM 25/1

## Lifetime



Life Expectancy Diagram - 14.5T8/COR/48-835/MF20/G/DIM 25/1

Lumen Maintenance Diagram - 14.5T8/COR/48-835/MF20/G/DIM 25/1



Life Expectancy Diagram - 14.5T8/COR/48-835/MF20/G/DIM 25/1

Lumen Maintenance Diagram - 14.5T8/COR/48-835/MF20/G/DIM 25/1

# CorePro MainsFit (UL Type-B) T8

## Lifetime



Life Expectancy Diagram - 14.5T8/COR/48-835/MF20/G/DIM 25/1

