



# CorePro LEDtube EM/ Mains T8

## CorePro LEDtube 1500mm 22W 865 T8 AU

Philips CorePro LEDtubes are the quick and easy way to replace T8 fluorescent or other LED tubes with a fast pack back time. Not only does the Core range of LEDtubes require a low initial investment, but LED energy efficiency also delivers instant savings that you can bank on over a long and reliable lifetime. Plus, with the same lamp size and light distribution as fluorescent alternatives, you'll never know the difference. There are two ways to install these LED tubes: Rewire your existing fluorescent-based luminaires so the CorePro LEDtubes work directly on the Mains. Or simply change the fluorescent starter to an LED starter that can be used with your Electromagnetic ballasts.

### Warnings and Safety

- NOTE: The overall energy efficiency and light distribution of any installation that uses these lamps will be determined by the design of the installation.
- Installation must be done according to the installation diagrams provided with the lamp or available online. Installation must be done by a certified professional.

### Product data

General information		Color Designation	
Cap-Base	G13 [ Medium Bi-Pin Fluorescent]	Color Designation	Cool Daylight
EU RoHS compliant	Yes	Correlated Color Temperature (Nom)	6500 K
Nominal Lifetime (Nom)	30000 h	Luminous Efficacy (rated) (Nom)	100.00 lm/W
Switching Cycle	200000	Color Consistency	<6
		Color Rendering Index (Nom)	80
		LLMF At End Of Nominal Lifetime (Nom)	70 %
Light technical		Operating and electrical	
Color Code	865 [ CCT of 6500K]	Input Frequency	50 to 60 Hz
Beam Angle (Nom)	240 °	Power (Nom)	22 W
Luminous Flux (Nom)	2200 lm		

# CorePro LEDtube EM/Mains T8

Lamp Current (Max)	108 mA
Lamp Current (Min)	108 mA
Starting Time (Nom)	0.5 s
Warm Up Time to 60% Light (Nom)	0.5 s
Power Factor (Nom)	0.9
Voltage (Nom)	220-240 V

## Temperature

T-Ambient (Max)	45 °C
T-Ambient (Min)	-20 °C
T-Storage (Max)	65 °C
T-Storage (Min)	-40 °C
T-Case Maximum (Nom)	50 °C

## Controls and dimming

Dimmable	No
----------	----

## Mechanical and housing

Bulb Finish	Frosted
Bulb Material	Glass

Product Length	1500 mm
Bulb Shape	Tube, double-ended

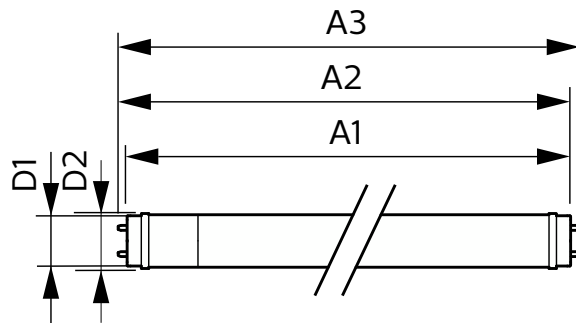
## Approval and application

Energy Saving Product	Yes
Approval Marks	RoHS compliance KEMA Keur certificate

## Product data

Full product code	871951444725700
Order product name	CorePro LEDtube 1500mm 22W 865 T8 AU
EAN/UPC - Product	8719514447257
Order code	929003520619
Numerator - Quantity Per Pack	1
Local code description	TLED1500865G3
Numerator - Packs per outer box	10
Material Nr. (12NC)	929003520619
Net Weight (Piece)	0.260 kg

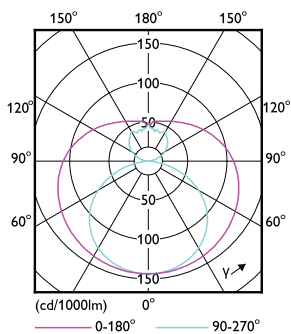
## Dimensional drawing



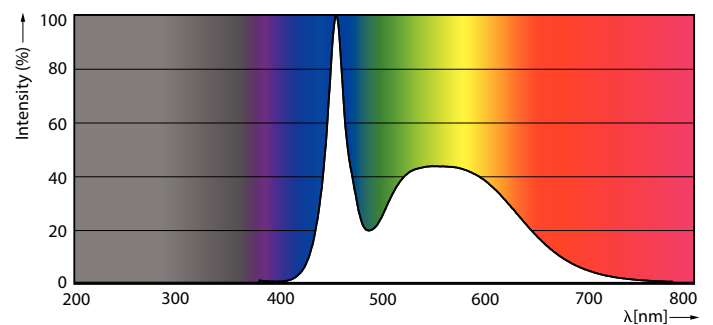
CorePro LEDtube 1500mm 22W 865 T8 AU

Product	D1	D2	A1	A2	A3
CorePro LEDtube 1500mm 22W 865 T8 AU	25.7 mm	28 mm	1500 mm	1507.1 mm	1514.2 mm

## Photometric data



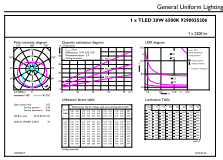
Light Distribution Diagram



Spectral Power Distribution Colour

# CorePro LEDtube EM/Mains T8

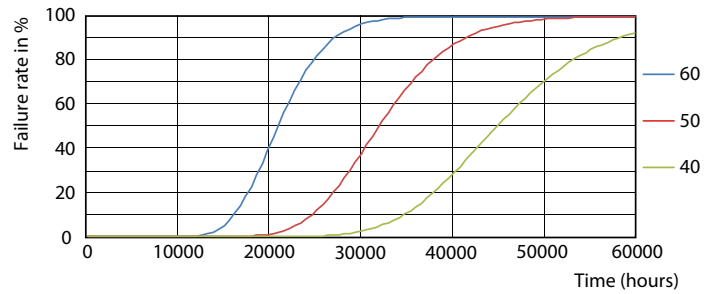
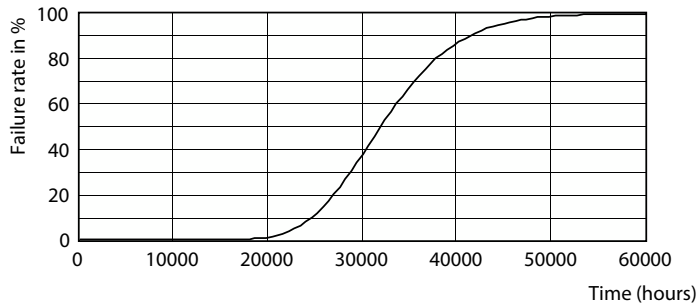
## Photometric data



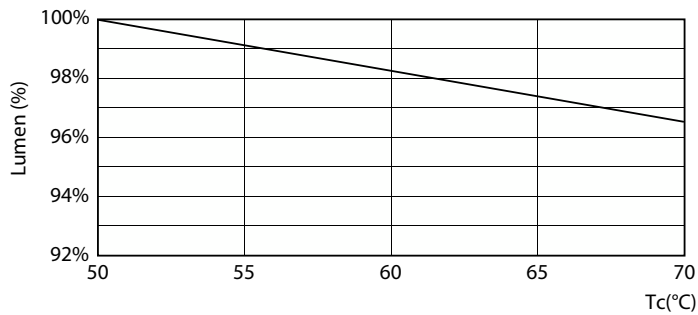
© 2022 Philips Lighting B.V. Page 11

### General uniform lighting

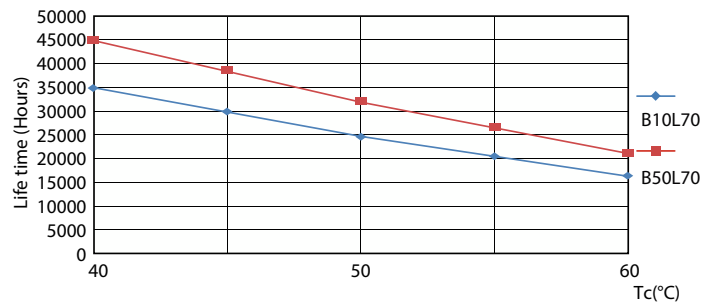
## Lifetime



### Life Expectancy Diagram



### FailureRate

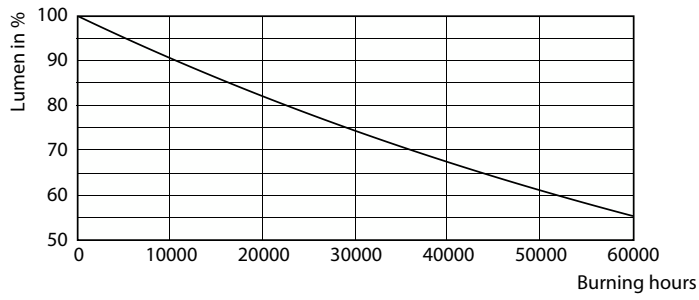


### Lumen Maintenance Diagram

### LifetimeVsTc

# CorePro LEDtube EM/Mains T8

## Lifetime



Lumen Maintenance Diagram

