



# CorePro LEDtube EM/ Mains T8

## CorePro LEDtube 1500mm 20W 840 T8 AP I

Philips CorePro LEDtubes are the quick and easy way to replace T8 fluorescent or other LED tubes with a fast pay back time. Not only does the Core range of LEDtubes require a low initial investment, but LED energy efficiency also delivers instant savings that you can bank on over a long and reliable lifetime. Plus, with the same lamp size and light distribution as fluorescent alternatives, you'll never know the difference. There are two ways to install these LED tubes: Rewire your existing fluorescent-based luminaires so the CorePro LEDtubes work directly on the Mains. Or simply change the fluorescent starter to an LED starter that can be used with your Electromagnetic ballasts.

### Warnings and Safety

- NOTE: The overall energy efficiency and light distribution of any installation that uses these lamps will be determined by the design of the installation.
- Installation must be done according to the installation diagrams provided with the lamp or available online. Installation must be done by a certified professional.

### Product data

General information		Color Designation	
Cap-Base	G13 [ Medium Bi-Pin Fluorescent]	Color Designation	Cool White (CW)
EU RoHS compliant	Yes	Correlated Color Temperature (Nom)	4000 K
Nominal Lifetime (Nom)	30000 h	Luminous Efficacy (rated) (Nom)	110.00 lm/W
Switching Cycle	200000	Color Consistency	<6
		Color Rendering Index (Nom)	80
		LLMF At End Of Nominal Lifetime (Nom)	70 %
Light technical		Operating and electrical	
Color Code	840 [ CCT of 4000K]	Input Frequency	50 to 60 Hz
Beam Angle (Nom)	240 °	Power (Nom)	20 W
Luminous Flux (Nom)	2200 lm		

# CorePro LEDtube EM/Mains T8

Lamp Current (Max)	108 mA
Lamp Current (Min)	108 mA
Starting Time (Nom)	0.5 s
Warm Up Time to 60% Light (Nom)	0.5 s
Power Factor (Nom)	0.9
Voltage (Nom)	220-240 V

## Temperature

T-Ambient (Max)	45 °C
T-Ambient (Min)	-20 °C
T-Storage (Max)	65 °C
T-Storage (Min)	-40 °C
T-Case Maximum (Nom)	50 °C

## Controls and dimming

Dimmable	No
----------	----

## Mechanical and housing

Bulb Finish	Frosted
Bulb Material	Glass

Product Length	1500 mm
Bulb Shape	Tube, double-ended

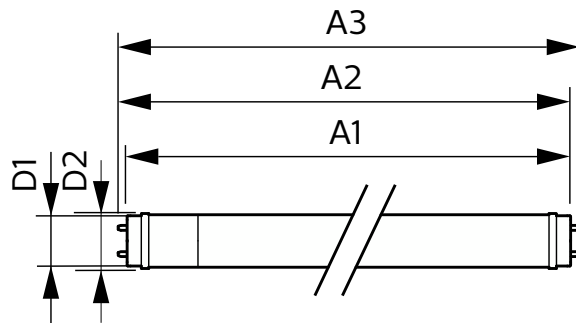
## Approval and application

Energy Saving Product	Yes
Approval Marks	RoHS compliance CE marking KEMA Keur certificate

## Product data

Full product code	871951444707300
Order product name	CorePro LEDtube 1500mm 20W 840 T8 AP I
EAN/UPC - Product	8719514447073
Order code	929003520508
Numerator - Quantity Per Pack	1
Numerator - Packs per outer box	20
Material Nr. (12NC)	929003520508
Net Weight (Piece)	0.260 kg

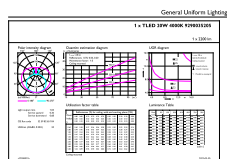
## Dimensional drawing



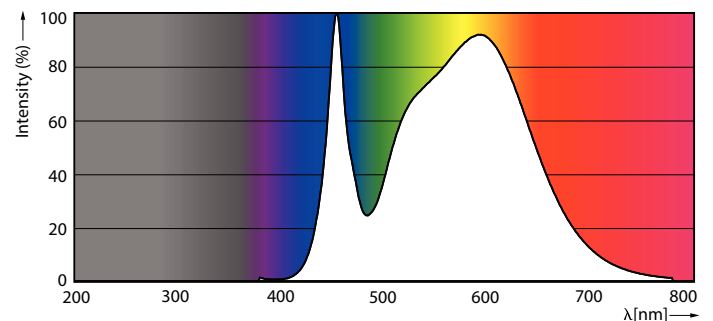
CorePro LEDtube 1500mm 20W 840 T8 AP I

Product	D1	D2	A1	A2	A3
CorePro LEDtube 1500mm 20W 840 T8 AP I	25.7 mm	28 mm	1500 mm	1507.1 mm	1514.2 mm

## Photometric data



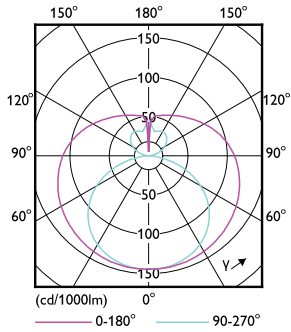
General uniform lighting



Spectral Power Distribution Colour

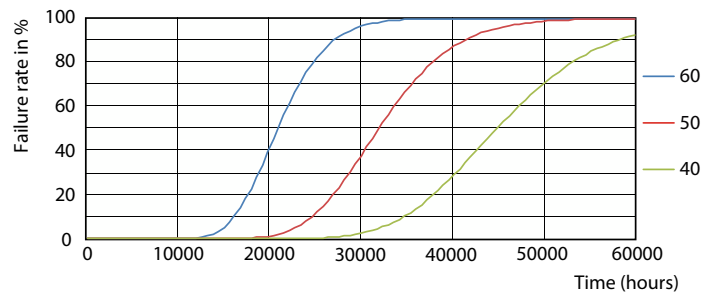
# CorePro LEDtube EM/Mains T8

## Photometric data

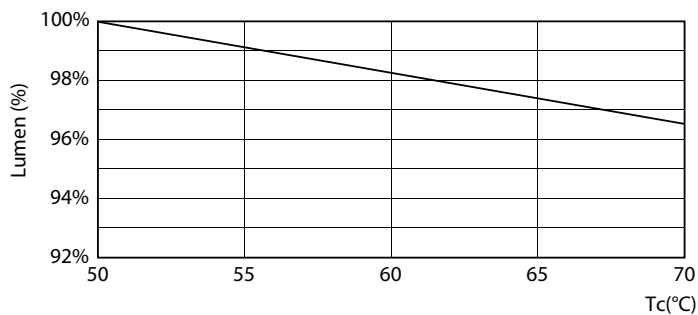


Light Distribution Diagram

## Lifetime

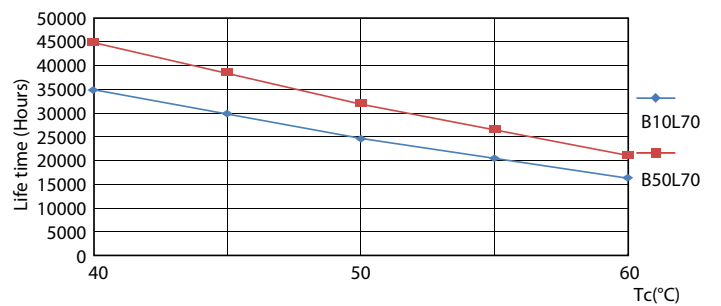


Life Expectancy Diagram



Lumen Maintenance Diagram

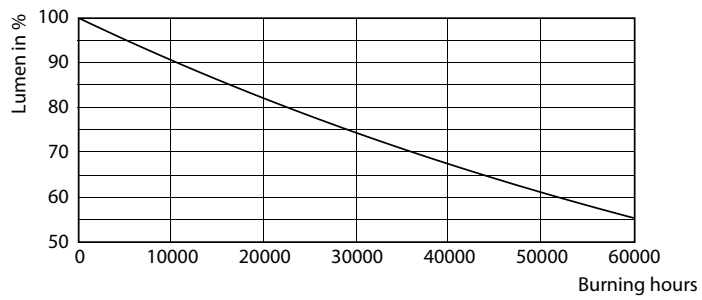
FailureRate



LifetimeVsTc

# CorePro LEDtube EM/Mains T8

## Lifetime



Lumen Maintenance Diagram

