



CorePro LEDtube EM/ Mains T8

CorePro LEDtube 1200mm 17.6W 865 T8 AU

Philips CorePro LEDtubes are the quick and easy way to replace T8 fluorescent or other LED tubes with a fast pay back time. Not only does the Core range of LEDtubes require a low initial investment, but LED energy efficiency also delivers instant savings that you can bank on over a long and reliable lifetime. Plus, with the same lamp size and light distribution as fluorescent alternatives, you'll never know the difference. There are two ways to install these LED tubes: Rewire your existing fluorescent-based luminaires so the CorePro LEDtubes work directly on the Mains. Or simply change the fluorescent starter to an LED starter that can be used with your Electromagnetic ballasts.

Warnings and Safety

- NOTE: The overall energy efficiency and light distribution of any installation that uses these lamps will be determined by the design of the installation.
- Installation must be done according to the installation diagrams provided with the lamp or available online. Installation must be done by a certified professional.

Product data

General information		Color Designation	
Cap-Base	G13 [Medium Bi-Pin Fluorescent]	Color Designation	Cool Daylight
EU RoHS compliant	Yes	Correlated Color Temperature (Nom)	6500 K
Nominal Lifetime (Nom)	30000 h	Luminous Efficacy (rated) (Nom)	102.00 lm/W
Switching Cycle	200000	Color Consistency	<6
		Color Rendering Index (Nom)	80
		LLMF At End Of Nominal Lifetime (Nom)	70 %
Light technical		Operating and electrical	
Color Code	865 [CCT of 6500K]	Input Frequency	50 to 60 Hz
Beam Angle (Nom)	240 °	Power (Nom)	17.6 W
Luminous Flux (Nom)	1800 lm		

CorePro LEDtube EM/Mains T8

Lamp Current (Max)	88 mA
Lamp Current (Min)	88 mA
Starting Time (Nom)	0.5 s
Warm Up Time to 60% Light (Nom)	0.5 s
Power Factor (Nom)	0.9
Voltage (Nom)	220-240 V

Temperature

T-Ambient (Max)	45 °C
T-Ambient (Min)	-20 °C
T-Storage (Max)	65 °C
T-Storage (Min)	-40 °C
T-Case Maximum (Nom)	50 °C

Controls and dimming

Dimmable	No
----------	----

Mechanical and housing

Bulb Finish	Frosted
Bulb Material	Glass

Product Length	1200 mm
Bulb Shape	Tube, double-ended

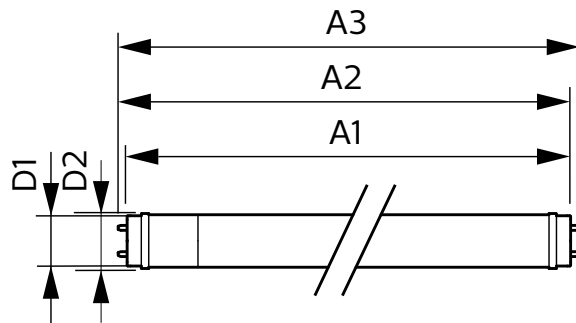
Approval and application

Energy Saving Product	Yes
Approval Marks	RoHS compliance KEMA Keur certificate

Product data

Full product code	871951444721900
Order product name	CorePro LEDtube 1200mm 17.6W 865 T8 AU
EAN/UPC - Product	8719514447219
Order code	929003520419
Numerator - Quantity Per Pack	1
Local code description	TLED1200865G3
Numerator - Packs per outer box	10
Material Nr. (12NC)	929003520419
Net Weight (Piece)	0.200 kg

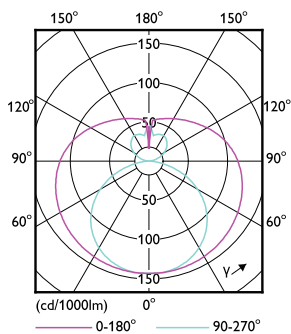
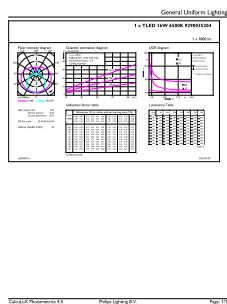
Dimensional drawing



CorePro LEDtube 1200mm 17.6W 865 T8 AU

Product	D1	D2	A1	A2	A3
CorePro LEDtube 1200mm 17.6W 865 T8 AU	25.7 mm	28 mm	1198 mm	1205 mm	1212 mm

Photometric data

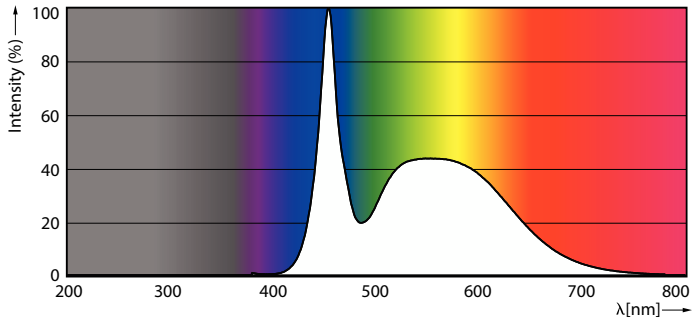


General uniform lighting

Light Distribution Diagram

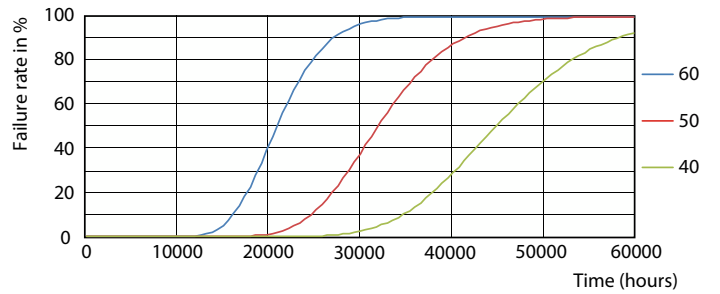
CorePro LEDtube EM/Mains T8

Photometric data

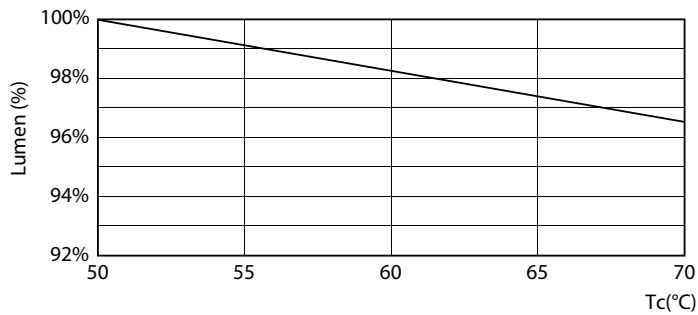


Spectral Power Distribution Colour

Lifetime

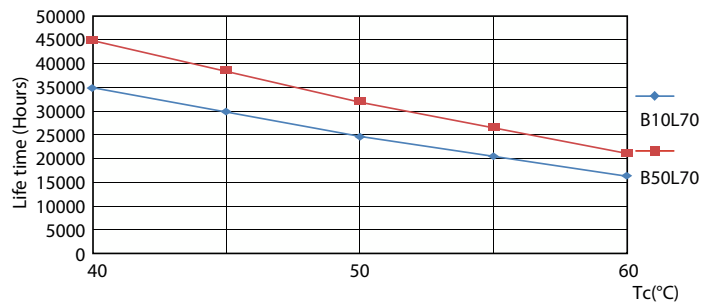


Life Expectancy Diagram



Lumen Maintenance Diagram

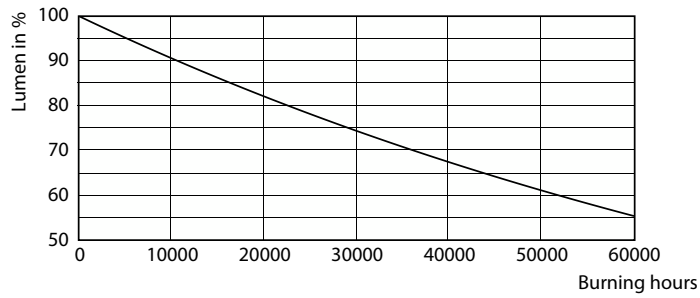
FailureRate



LifetimeVsTc

CorePro LEDtube EM/Mains T8

Lifetime



Lumen Maintenance Diagram

