



# CorePro LEDtube EM/ Mains T8

## CorePro LEDtube 1200mm 15.5W 865 T8

Philips CorePro LEDtubes are the quick and easy way to replace T8 fluorescent or other LED tubes with a fast pay back time. Not only does the Core range of LEDtubes require a low initial investment, but LED energy efficiency also delivers instant savings that you can bank on over a long and reliable lifetime. Plus, with the same lamp size and light distribution as fluorescent alternatives, you'll never know the difference. There are two ways to install these LED tubes: Rewire your existing fluorescent-based luminaires so the CorePro LEDtubes work directly on the Mains. Or simply change the fluorescent starter to an LED starter that can be used with your Electromagnetic ballasts.

### Warnings and Safety

- NOTE: The overall energy efficiency and light distribution of any installation that uses these lamps will be determined by the design of the installation.
- Installation must be done according to the installation diagrams provided with the lamp or available online. Installation must be done by a certified professional.

### Product data

General information			
Cap-Base	G13 [ Medium Bi-Pin Fluorescent]	Beam Angle (Nom)	240 °
EU RoHS compliant	Yes	Luminous Flux (Nom)	1800 lm
Nominal Lifetime (Nom)	30000 h	Color Designation	Cool Daylight
Switching Cycle	200000X	Correlated Color Temperature (Nom)	6500 K
Technical Type	LEDTECH-LOV	Luminous Efficacy (rated) (Nom)	116.00 lm/W
Flux measurement reference	Sphere	Color Consistency	<6
		Color Rendering Index (Nom)	80
		LLMF At End Of Nominal Lifetime (Nom)	70 %
Light technical			
Color Code	865 [ CCT of 6500K]		

# CorePro LEDtube EM/Mains T8

## Operating and electrical

Input Frequency	50 to 60 Hz
Power (Nom)	15.5 W
Lamp Current (Nom)	84 mA
Starting Time (Nom)	0.5 s
Warm Up Time to 60% Light (Nom)	0.5 s
Power Factor (Nom)	0.9
Voltage (Nom)	220-240 V

## Temperature

T-Ambient (Max)	45 °C
T-Ambient (Min)	-20 °C
T-Storage (Max)	65 °C
T-Storage (Min)	-40 °C
T-Case Maximum (Nom)	50 °C

## Controls and dimming

Dimmable	No
----------	----

## Mechanical and housing

Bulb Finish	Frosted
-------------	---------

Bulb Material	Glass
Product Length	1200 mm
Bulb Shape	Tube, double-ended

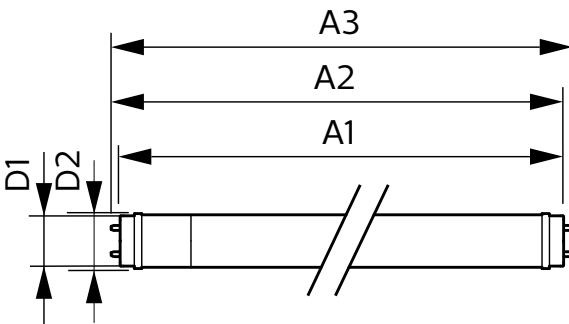
## Approval and application

Energy Saving Product	Yes
Approval Marks	RoHS compliance CE marking KEMA Keur certificate
Energy Consumption kWh/1000 h	16 kWh

## Product data

Full product code	871951444809400
Order product name	CorePro LEDtube 1200mm 15.5W 865 T8
EAN/UPC - Product	8719514448094
Order code	929003519802
Numerator - Quantity Per Pack	1
Numerator - Packs per outer box	20
Material Nr. (12NC)	929003519802
Copy Net Weight (Piece)	0.220 kg

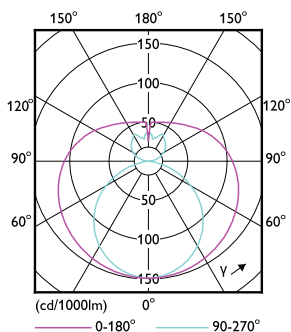
## Dimensional drawing



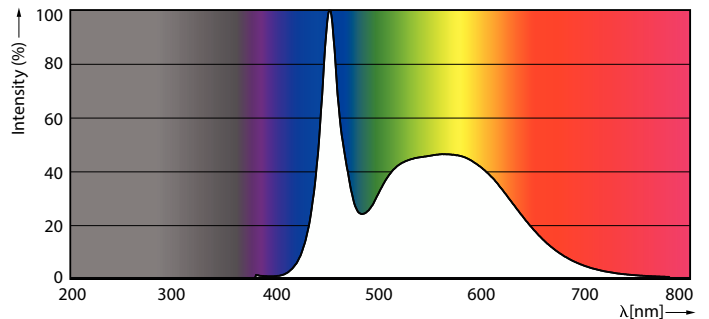
CorePro LEDtube 1200mm 15.5W 865 T8

Product	D1	D2	A1	A2	A3
CorePro LEDtube 1200mm 15.5W 865 T8					

## Photometric data



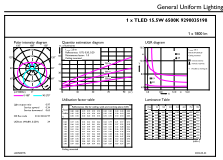
Light Distribution Diagram



Spectral Power Distribution Colour

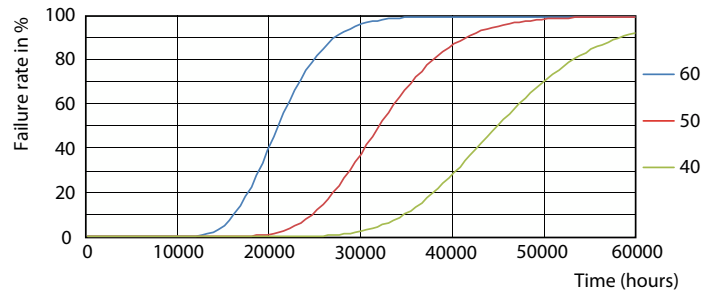
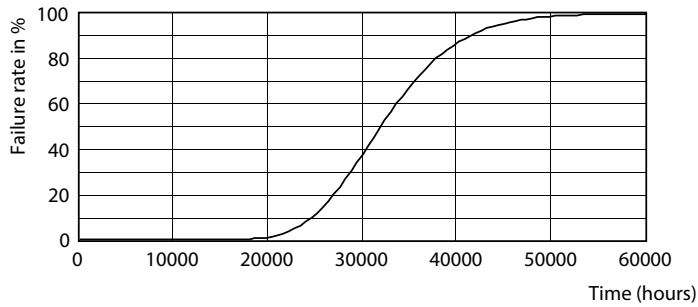
# CorePro LEDtube EM/Mains T8

## Photometric data

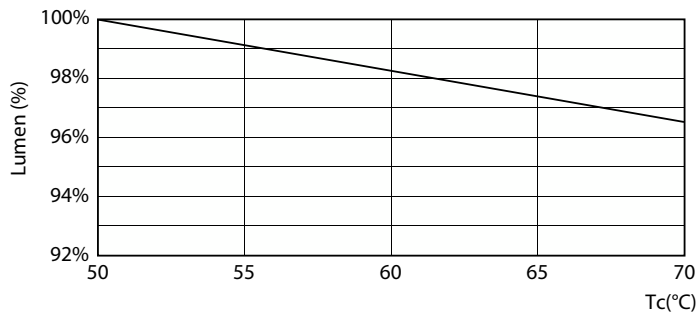


General uniform lighting

## Lifetime

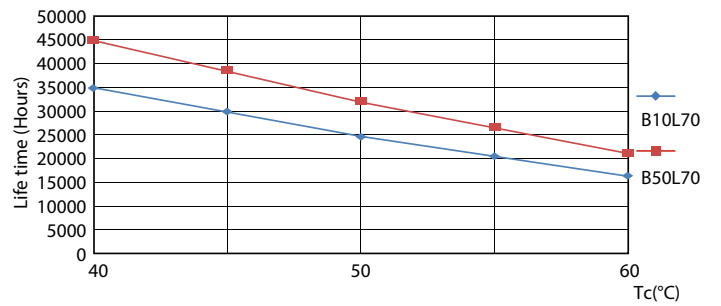


Life Expectancy Diagram



LumenVsTc

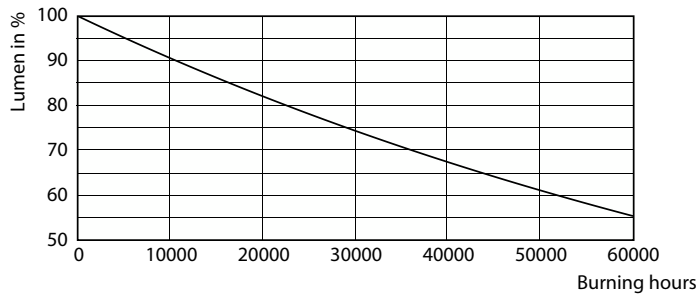
FailureRate



LifetimeVsTc

# CorePro LEDtube EM/Mains T8

## Lifetime



Lumen Maintenance Diagram

