



CorePro LEDtube EM/ Mains T8



CorePro LEDtube 1200mm UO 21.5W 865 T8

Philips CorePro LEDtubes are the quick and easy way to replace T8 fluorescent or other LED tubes with a fast pack back time. Not only does the Core range of LEDtubes require a low initial investment, but LED energy efficiency also delivers instant savings that you can bank on over a long and reliable lifetime. Plus, with the same lamp size and light distribution as fluorescent alternatives, you'll never know the difference. There are two ways to install these LED tubes: Rewire your existing fluorescent-based luminaires so the CorePro LEDtubes work directly on the Mains. Or simply change the fluorescent starter to an LED starter that can be used with your Electromagnetic ballasts.

Warnings and Safety

- NOTE: The overall energy efficiency and light distribution of any installation that uses these lamps will be determined by the design of the installation.
- Installation must be done according to the installation diagrams provided with the lamp or available online. Installation must be done by a certified professional.

Product data

| General information | | | |
|----------------------------|----------------------------------|---------------------------------------|---------------|
| Cap-Base | G13 [Medium Bi-Pin Fluorescent] | Beam Angle (Nom) | 240 ° |
| EU RoHS compliant | Yes | Luminous Flux (Nom) | 2400 lm |
| Nominal Lifetime (Nom) | 30000 h | Color Designation | Cool Daylight |
| Switching Cycle | 200000X | Correlated Color Temperature (Nom) | 6500 K |
| Flux measurement reference | Sphere | Luminous Efficacy (rated) (Nom) | 111 lm/W |
| Tier | CorePro | Color Consistency | <6 |
| | | Color Rendering Index (Nom) | 80 |
| | | LLMF At End Of Nominal Lifetime (Nom) | 70 % |
| Light technical | | | |
| Color Code | 865 [CCT of 6500K] | | |

CorePro LEDtube EM/Mains T8

| Operating and electrical | |
|---------------------------------|-------------|
| Input Frequency | 50 to 60 Hz |
| Power (Nom) | 21.5 W |
| Lamp Current (Max) | 105 mA |
| Lamp Current (Min) | 105 mA |
| Starting Time (Nom) | 0.5 s |
| Warm Up Time to 60% Light (Nom) | 0.5 s |
| Power Factor (Nom) | 0.9 |
| Voltage (Nom) | 220-240 V |

| Temperature | |
|----------------------|--------|
| T-Ambient (Max) | 45 °C |
| T-Ambient (Min) | -20 °C |
| T-Storage (Max) | 65 °C |
| T-Storage (Min) | -40 °C |
| T-Case Maximum (Nom) | 53 °C |

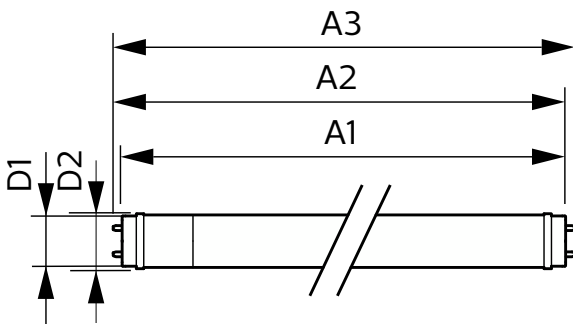
| Controls and dimming | |
|----------------------|----|
| Dimmable | No |

| Mechanical and housing | |
|------------------------|---------|
| Bulb Finish | Frosted |
| Bulb Material | Glass |

| Product Length | 1200 mm |
|-------------------------------|--|
| Bulb Shape | Tube, double-ended |
| Approval and application | |
| Energy Efficiency Class | E |
| Energy Saving Product | Yes |
| Approval Marks | RoHS compliance CE marking KEMA Keur certificate |
| Energy Consumption kWh/1000 h | 22 kWh |
| EPREL Registration Number | 1037556 |

| Product data | |
|---------------------------------|--|
| Full product code | 871951441899800 |
| Order product name | CorePro LEDtube 1200mm UO 21.5W 865 T8 |
| EAN/UPC - Product | 8719514418998 |
| Order code | 929003154302 |
| Numerator - Quantity Per Pack | 1 |
| Numerator - Packs per outer box | 20 |
| Material Nr. (12NC) | 929003154302 |
| Net Weight (Piece) | 0.215 kg |

Dimensional drawing

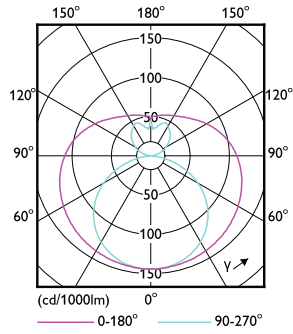
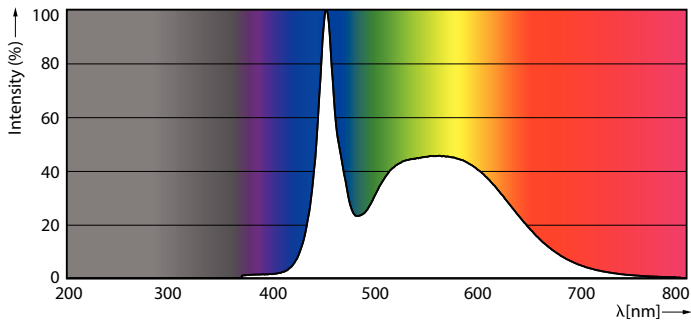


CorePro LEDtube 1200mm UO 21.5W 865 T8

| Product | D1 | D2 | A1 | A2 | A3 |
|--|---------|-------|---------|---------|---------|
| CorePro LEDtube 1200mm UO 21.5W 865 T8 | 25.7 mm | 28 mm | 1198 mm | 1205 mm | 1212 mm |

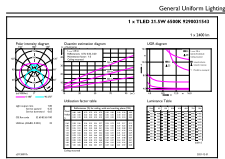
CorePro LEDtube EM/Mains T8

Photometric data



Spectral Power Distribution Colour

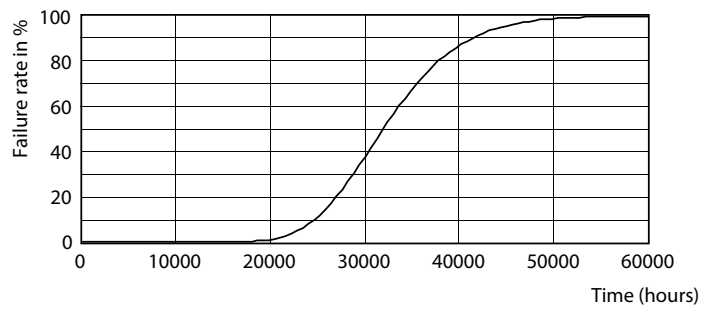
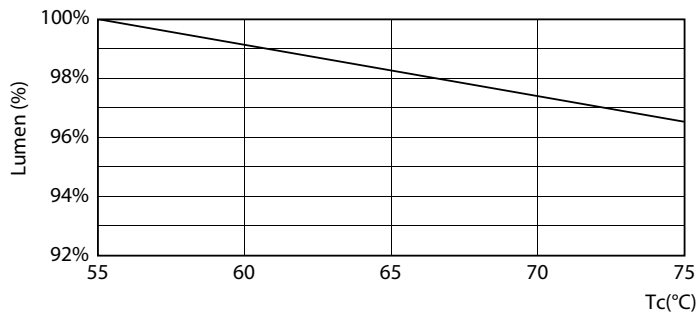
Light Distribution Diagram



General Uniform Lighting

General uniform lighting

Lifetime

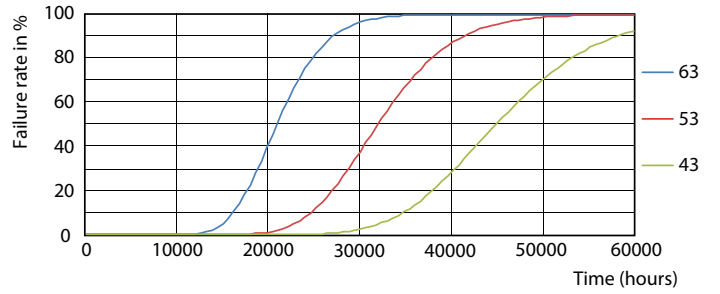
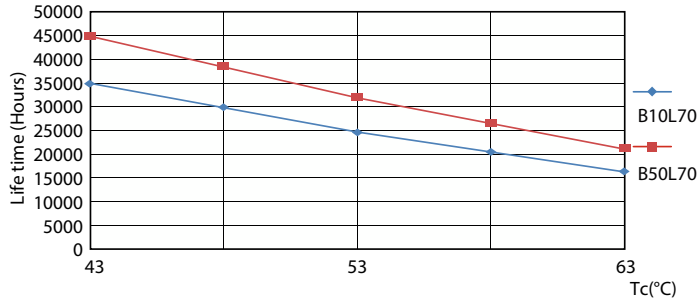


LEDtube COR EU 21,5W 30K LumenVsTc-LMP

Life Expectancy Diagram

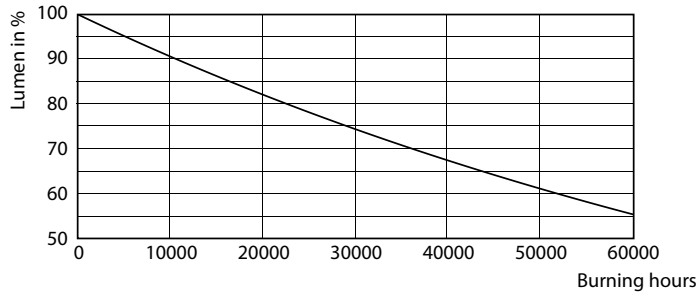
CorePro LEDtube EM/Mains T8

Lifetime



LEDtube 30K 4363 LifetimeVsTc-LED

LEDtube 30K 4363 FailureRate-LED



Lumen Maintenance Diagram

