



T8

10.5T8/COR/48-840/IF16/G/DIM/BAA 25/1

Our TLEDs are available in InstantFit (Type A / Type C) or MainsFit (Ballast bypass / Type B) versions. The InstantFit lamps work on a broad variety of ballasts and LED drivers. Only InstantFit has over 15,000 lamp & ballast combinations delivering even light output, energy savings and a long lifetime. Our MainsFit products feature a double-ended design, simplifying installation while a proprietary safety circuit minimizes a shock risk. Lamp sizes range from 2-foot to 8-foot and U-bend with a variety of lumen outputs.

Product data

General Information		Temperature	
Lighting Technology	LED	Input Frequency	20K to 120K Hz
Switching Cycle	50,000	Power Consumption	10.5 W
Buy American Compliant Products	Yes	Starting Time (Nom)	0.5 s
Nominal lifetime	50,000 hour(s)	Warm-up time to 60% light	0.5 s
Cap-Base	G13 [Medium Bi-Pin Fluorescent]	Power Factor (Fraction)	0.9
Light Technical		Voltage (Nom)	120-277, 347 V
Color Code	840 [CCT of 4000K]	Controls and Dimming	
Beam Angle (Nom)	240 degree(s)	Dimmable	Only with specific dimmers
Luminous Flux	1,650 lumen	Mechanical and Housing	
Color Designation	Cool White (CW)	Bulb Finish	Frosted
Correlated Color Temperature (Nom)	4000 K	Bulb Material	Glass
Luminous Efficacy (rated) (Nom)	157.00 lm/W	Product Length	1,200 mm
Color Consistency	<6	Bulb Shape	Tube, double-ended
Color rendering index (CRI)	80		
LLMF At End Of Nominal Lifetime (Nom)	70 %		
Operating and Electrical			
Line Frequency	20K to 120K Hz		

T8

Approval and Application

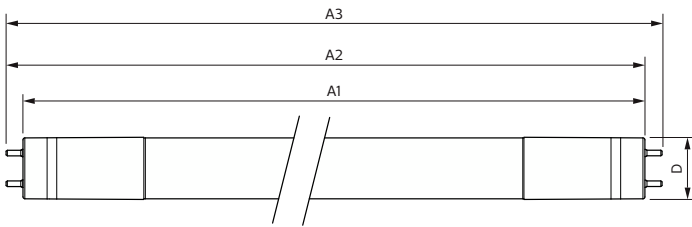
Energy Saving Product	Yes
Approval Marks	RoHS compliance UL certificate DLC compliance
EU RoHS compliant	Yes

Product Data

Order product name	10.5T8/COR/48-840/IF16/G/DIM/BAA 25/1
--------------------	---------------------------------------

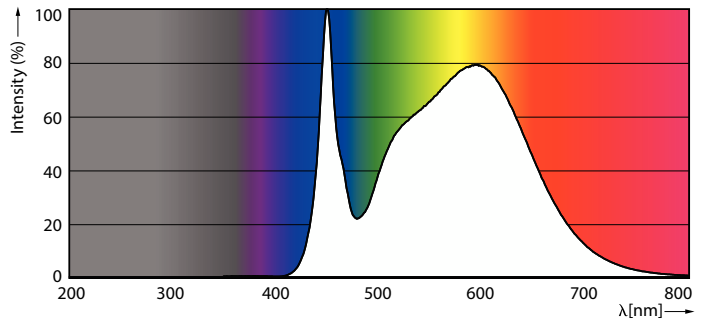
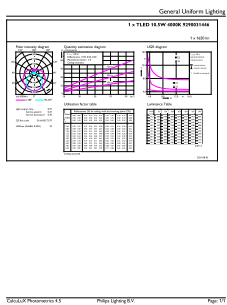
Order code	929003144604
Numerator - Quantity Per Pack	1
Numerator - Packs per outer box	25
Material number (12NC)	929003144604
Full product name	10.5T8/COR/48-840/IF16/G/DIM/BAA 25/1
EAN/UPC - Case	50046677576788

Dimensional drawing



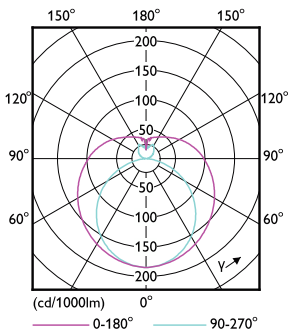
Product	D1	D2	A1	A2	A3
10.5T8/COR/48-840/IF16/G/DIM/BAA 25/1	25.7 mm	25.7 mm	1,198.2 mm	1,205.3 mm	1,212.4 mm

Photometric data



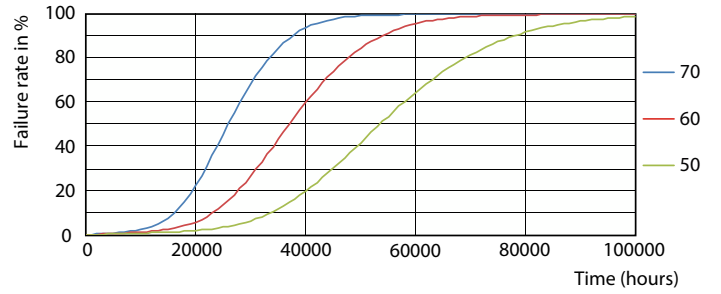
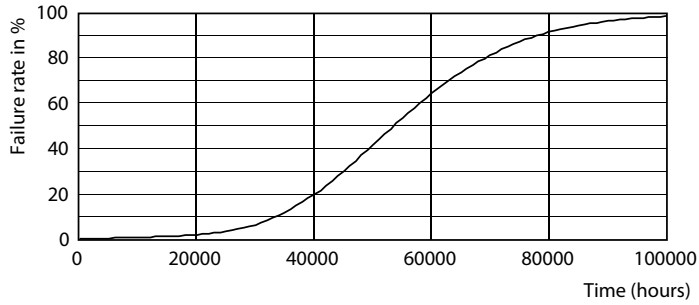
General uniform lighting - 10.5T8/COR/48-840/IF16/G/DIM/BAA 25/1

Spectral Power Distribution Colour - 10.5T8/COR/48-840/IF16/G/DIM/BAA 25/1



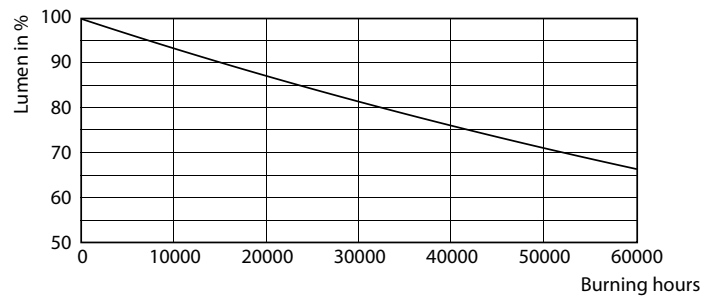
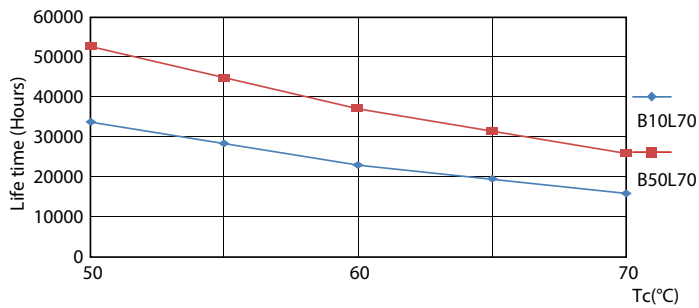
Light Distribution Diagram - 10.5T8/COR/48-840/IF16/G/DIM/BAA 25/1

Lifetime



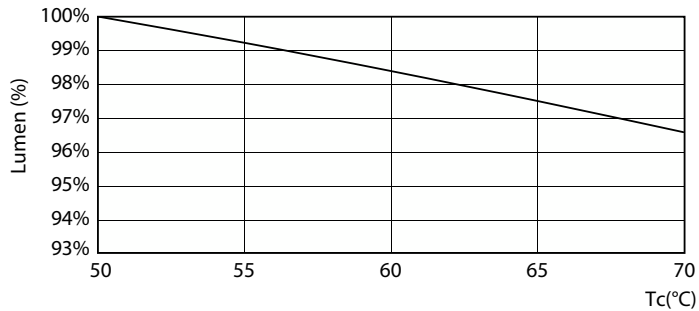
Life Expectancy Diagram - 10.5T8/COR/48-840/IF16/G/DIM/BAA 25/1

Life Expectancy Diagram - 10.5T8/COR/48-840/IF16/G/DIM/BAA 25/1



Life Expectancy Diagram - 10.5T8/COR/48-840/IF16/G/DIM/BAA 25/1

Lumen Maintenance Diagram - 10.5T8/COR/48-840/IF16/G/DIM/BAA 25/1



Lumen Maintenance Diagram - 10.5T8/COR/48-840/IF16/G/DIM/BAA 25/1

