

# CorePro MainsFit (UL Type-B) T8

33T8/COR/96-850/MF44/G/FA8 10/1

The CorePro MainsFit (UL Type B) lamps are designed to be the perfect retrofit solution to move from traditional fluorescent lamps to energy saving LEDs. This ballast bypass lamp has everything needed built into the lamp with proven energy savings, long life (up to 50k hours), surge suppression and industry leading safety features. All lamps in the CorePro MainsFit family are double-ended to help simplify the installation. In addition, all lamps meet the Philips standards for light quality so that end users will be in a comfortable environment regardless of the CorePro MainsFit lamp type.

## Product data

General Information	
Cap-Base	FA8 [FA8]
Nominal lifetime	50,000 hour(s)
Switching Cycle	50,000
Lighting Technology	LED
EU RoHS compliant	Yes

Light Technical	
Color Code	850 [CCT of 5000K]
Beam Angle (Nom)	240 degree(s)
Luminous Flux	4,400 lumen
Color Designation	Daylight
Correlated Color Temperature (Nom)	5000 K
Luminous Efficacy (rated) (Nom)	133.00 lm/W
Color Consistency	<5
Color rendering index (CRI)	80

LLMF At End Of Nominal Lifetime (Nom) 70 %	
--	--

Operating and Electrical	
Line Frequency	50 to 60 Hz
Input Frequency	50 to 60 Hz
Power Consumption	33 W
Wattage Equivalent	96 W
Starting Time (Nom)	0.5 s
Warm-up time to 60% light	0.5 s
Power Factor (Fraction)	0.9
Voltage (Nom)	120-277 V

Temperature	
Ambient temperature range	-20 °C to 45 °C
T-Case Maximum (Nom)	50 °C

# CorePro MainsFit (UL Type-B) T8

## Controls and Dimming

**Dimmable** Limited

## Mechanical and Housing

**Bulb Finish** Frosted  
**Bulb Material** Glass  
**Product Length** 2,400 mm  
**Bulb Shape** Tube, double-ended

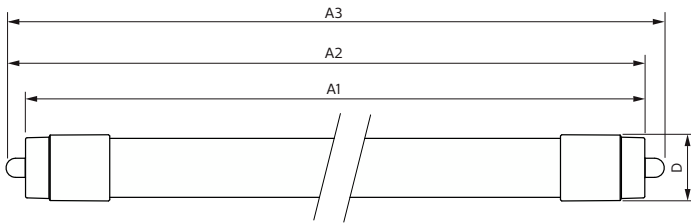
## Approval and Application

**Energy Saving Product** Yes  
**Approval Marks** RoHS compliance UL certificate DLC compliance

## Product Data

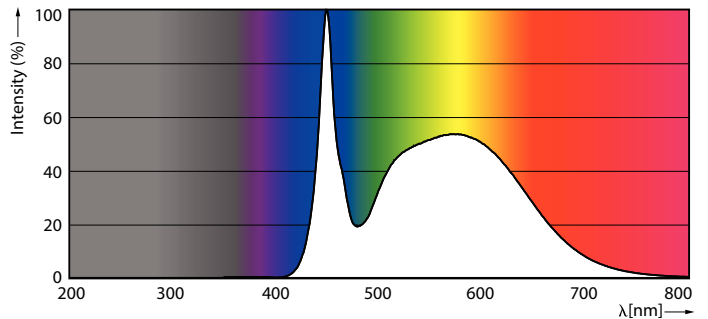
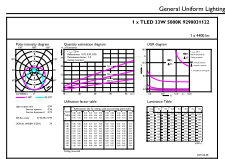
**Order product name** 33T8/COR/96-850/MF44/G/FA8 10/1  
**Order code** 929003112204  
**Numerator - Quantity Per Pack** 1  
**Numerator - Packs per outer box** 10  
**Material Nr. (12NC)** 929003112204  
**Full product name** 33T8/COR/96-850/MF44/G/FA8 10/1  
**EAN/UPC - Case** 5004667757536  
**EAN/UPC - Product/Case** 046677575731

## Dimensional drawing



Product	D2	A1	A2	A3
33T8/COR/96-850/MF44/G/FA8 10/1	27.9 mm	2,369.8 mm	2,378.7 mm	2,387.8 mm

## Photometric data

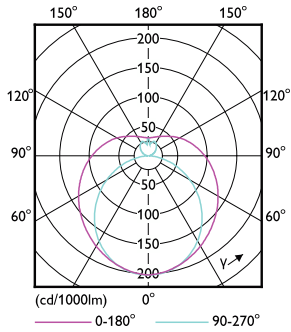


General uniform lighting - 33T8/COR/96-850/MF44/G/FA8 10/1

Spectral Power Distribution Colour - 33T8/COR/96-850/MF44/G/FA8 10/1

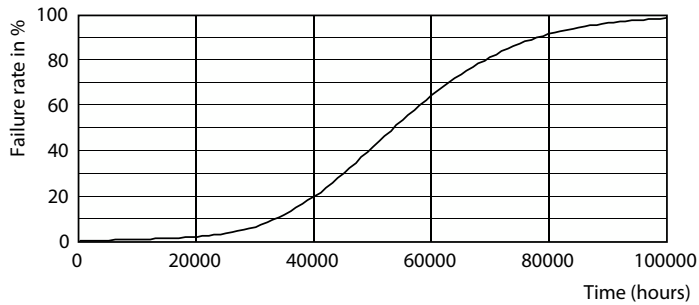
# CorePro MainsFit (UL Type-B) T8

## Photometric data

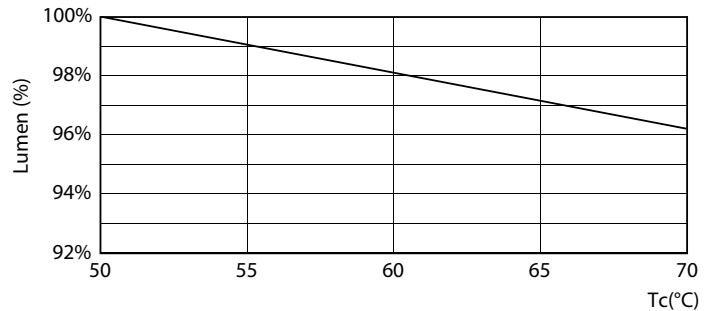


Light Distribution Diagram - 33T8/COR/96-850/MF44/G/FA8 10/1

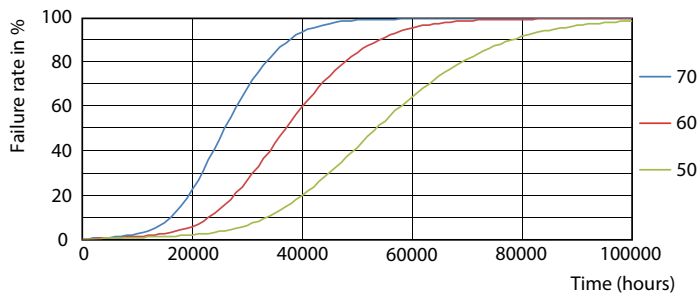
## Lifetime



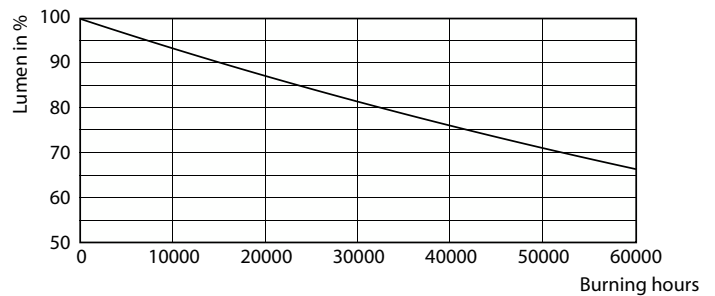
Life Expectancy Diagram - 33T8/COR/96-850/MF44/G/FA8 10/1



Lumen Maintenance Diagram - 33T8/COR/96-850/MF44/G/FA8 10/1



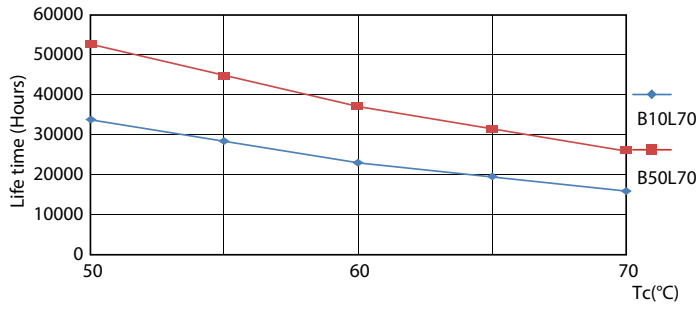
Life Expectancy Diagram - 33T8/COR/96-850/MF44/G/FA8 10/1



Lumen Maintenance Diagram - 33T8/COR/96-850/MF44/G/FA8 10/1

# CorePro MainsFit (UL Type-B) T8

## Lifetime



Life Expectancy Diagram - 33T8/COR/96-850/MF44/G/FA8 10/1

