



Specialty LEDtube

Sensor LEDtube 1200mm 16W 865 T8

Philips specialty LEDtube integrates a LED light source into a traditional fluorescent form factor. This product is the ideal solution for relamping to serve multi-purpose usage: it meets general lighting requirements, offers significant energy savings, and special function such as Visible Light Communication.

Product data

General Information		Lamp Current (Min)	
Cap-Base	G13 [Medium Bi-Pin Fluorescent]		80 mA
Nominal lifetime	30,000 hour(s)	Starting Time (Nom)	0.5 s
Switching Cycle	50,000	Warm-up time to 60% light	0.5 s
Lighting Technology	LED	Power Factor (Fraction)	0.9
EU RoHS compliant	Yes	Voltage (Nom)	220-240 V
Light Technical		Temperature	
Color Code	865 [CCT of 6500K]	Ambient temperature range	-20 °C to 45 °C
Beam Angle (Nom)	240 degree(s)	T-Case Maximum (Nom)	50 °C
Luminous Flux	1,800 lm	Controls and Dimming	
Color Designation	Cool Daylight	Dimmable	Only with specific dimmers
Correlated Color Temperature (Nom)	6500 K	Mechanical and Housing	
Luminous Efficacy (rated) (Nom)	112 lm/W	Bulb Finish	Frosted
Color Consistency	<6	Bulb Material	Glass
Color rendering index (CRI)	80	Product Length	1,200 mm
LLMF At End Of Nominal Lifetime (Nom)	70 %	Bulb Shape	T8
Operating and Electrical		Approval and Application	
Line Frequency	50 to 60 Hz	Energy Saving Product	Yes
Input Frequency	50 to 60 Hz	Approval Marks	RoHS compliance KEMA Keur certificate
Power Consumption	16 W		
Lamp Current (Max)	80 mA		

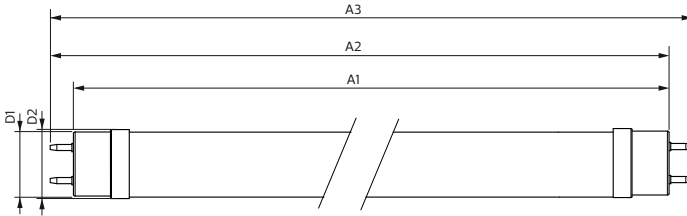
Specialty LEDtube

Product Data

Order product name	Sensor LEDtube 1200mm 16W 865 T8
Full product name	Sensor LEDtube 1200mm 16W 865 T8
Full product code	692234194467300
Order code	929003103410
Material Nr. (12NC)	929003103410

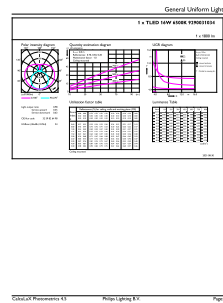
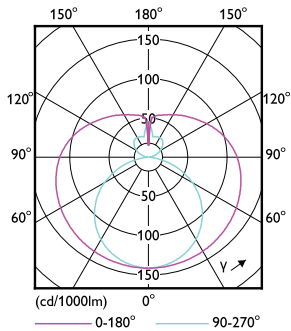
Numerator - Quantity Per Pack	1
EAN/UPC - Product/Case	6922341944673
Numerator - Packs per outer box	10
EAN/UPC - Case	6922341944680

Dimensional drawing



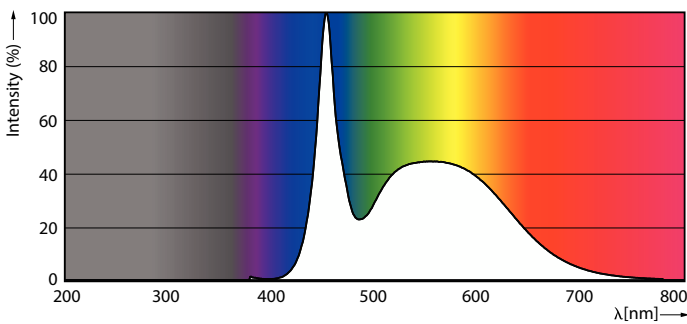
Product	D1	D2	A1	A2	A3
Sensor LEDtube 1200mm 16W 865 T8	25.7 mm	28 mm	1,198.2 mm	1,205.3 mm	1,212.4 mm

Photometric data



Light Distribution Diagram - Sensor LEDtube 1200mm 16W 865 T8

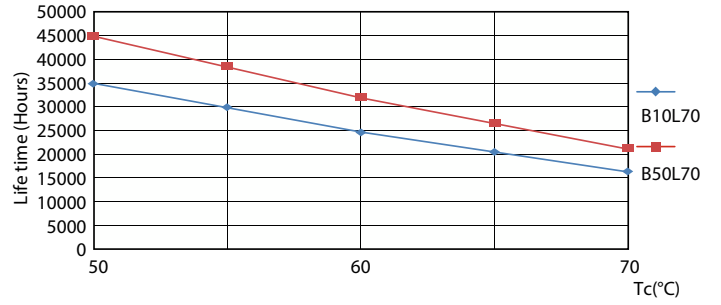
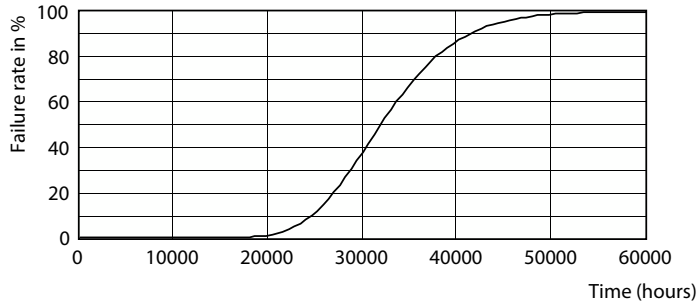
General uniform lighting - Sensor LEDtube 1200mm 16W 865 T8



Spectral Power Distribution Colour - Sensor LEDtube 1200mm 16W 865 T8

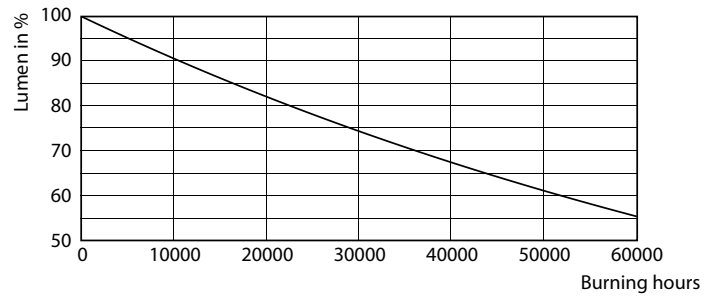
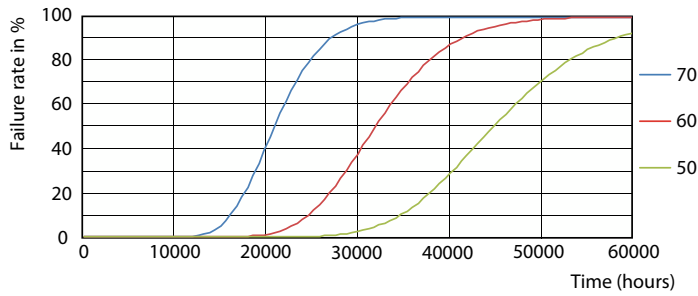
Specialty LEDtube

Lifetime



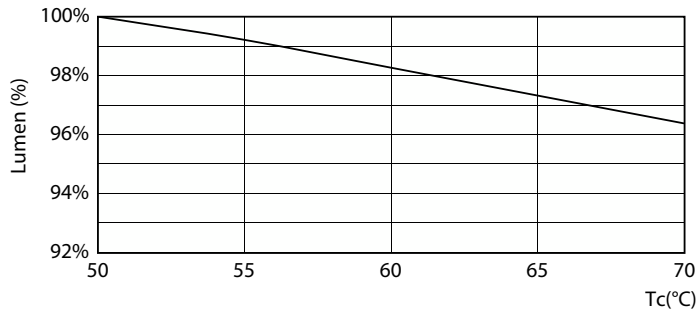
Life Expectancy Diagram - Sensor LEDtube 1200mm 16W 865 T8

Life Expectancy Diagram - Sensor LEDtube 1200mm 16W 865 T8



Life Expectancy Diagram - Sensor LEDtube 1200mm 16W 865 T8

Lumen Maintenance Diagram - Sensor LEDtube 1200mm 16W 865 T8



Lumen Maintenance Diagram

Specialty LEDtube

