



MASTER LEDtube EM/ Mains T8

MASTER LEDtube 1200mm UE 13.5W 840 T8

The Philips MASTER LEDtube integrates a LED light source into a traditional fluorescent form factor. Its unique design creates a perfectly uniform visual appearance which cannot be distinguished from traditional fluorescent. For those that are looking for value for money within limited budget and re-lamping efforts for better light effect and lifetime.

Warnings and Safety

- NOTES: The overall energy efficiency and light distribution of any installation that uses these lamps are determined by the design of the installation.

Product data

General Information		Color Rendering Index (Nom)		80	
Cap-Base	G13 ROT (Rotating) [Medium Bi-Pin Fluorescent]	LLMF At End Of Nominal Lifetime (Nom)		70 %	
EU RoHS compliant	Yes	Operating and Electrical			
Nominal Lifetime (Nom)	70000 h	Input Frequency	50 to 60 Hz		
Switching Cycle	200000X	Power (Nom)	13.5 W		
Flux measurement reference	Sphere	Lamp Current (Max)	69 mA		
		Lamp Current (Min)	56 mA		
		Starting Time (Nom)	0.5 s		
		Warm Up Time to 60% Light (Nom)	0.5 s		
Light Technical		Power Factor (Nom)	0.9		
Color Code	840 [CCT of 4000K]	Voltage (Nom)	220-240 V		
Beam Angle (Nom)	160 °	Temperature			
Luminous Flux (Nom)	2500 lm	T-Ambient (Max)	45 °C		
Color Designation	Cool White (CW)	T-Ambient (Min)	-20 °C		
Correlated Color Temperature (Nom)	4000 K				
Luminous Efficacy (rated) (Nom)	185.00 lm/W				
Color Consistency	<6				

MASTER LEDtube EM/Mains T8

T-Storage (Max)	65 °C
T-Storage (Min)	-40 °C
T-Case Maximum (Nom)	55 °C

Controls and Dimming

Dimmable	No
----------	----

Mechanical and Housing

Bulb Finish	Frosted
Bulb Material	Glass
Product Length	1200 mm
Bulb Shape	Tube, double-ended

Approval and Application

Energy Efficiency Class	B
Energy Saving Product	Yes

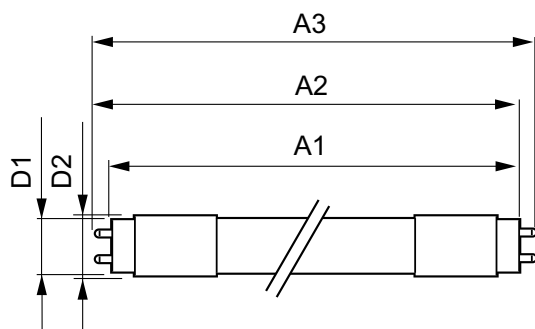
Approval Marks	RoHS compliance TUV CE marking KEMA Keur certificate
----------------	------------------------------------------------------

Energy Consumption kWh/1000 h	14 kWh
EPREL Registration Number	453167

Product Data

Full product code	871951433972900
Order product name	MASTER LEDtube 1200mm UE 13.5W 840 T8
EAN/UPC - Product	8719514339729
Order code	929003067002
Numerator - Quantity Per Pack	1
Numerator - Packs per outer box	10
Material Nr. (12NC)	929003067002
Net Weight (Piece)	0.235 kg

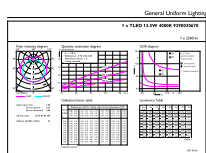
Dimensional drawing



T8 UE 4ft 220-240V 13.5W 2500lm 4000K

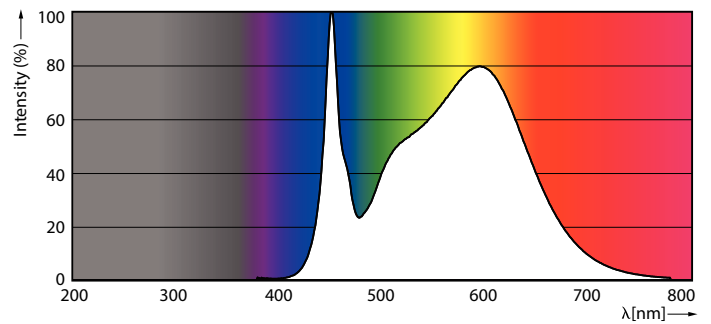
Product	D1	D2	A1	A2	A3
MASTER LEDtube 1200mm UE 13.5W 840 T8	25.8 mm	28 mm	1198.2 mm	1205.3 mm	1212.4 mm

Photometric data



General Ambient Light

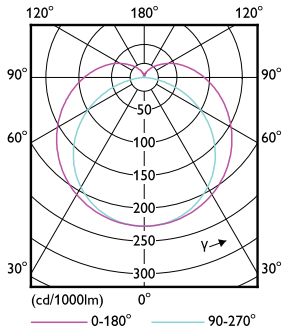
LEDtube MAS 13,5W G13 2500lm 840-GUL



LEDtube MAS 13,5W G13 2500lm 840-POC

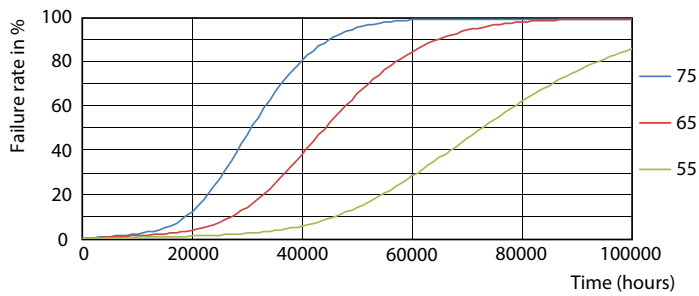
MASTER LEDtube EM/Mains T8

Photometric data

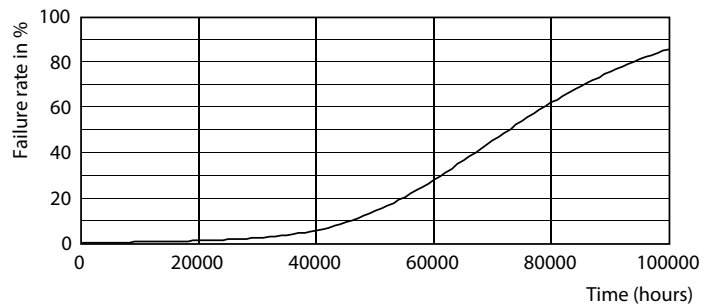


LEDtube MAS 13,5W G13 2500lm-LDD

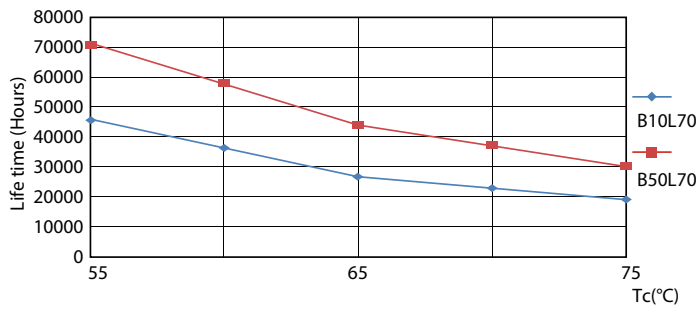
Lifetime



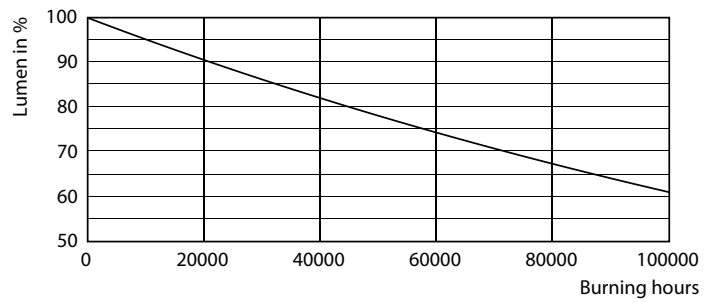
LEDtube MAS 13,5W 70K FailureRate-LED



LEDtube_70K-LED



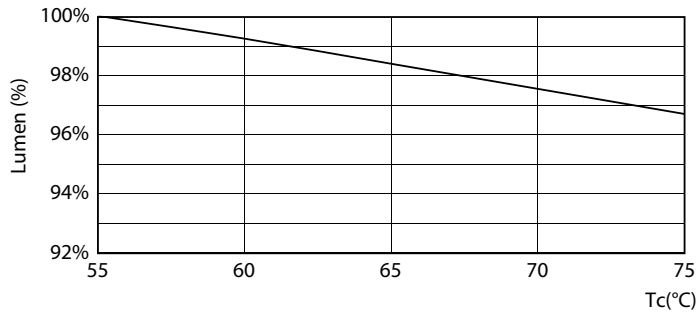
LEDtube MAS 13,5W 70K LifetimeVsTc-LED



LEDtube_70K-LMP

MASTER LEDtube EM/Mains T8

Lifetime



LEDtube MAS 13,5W 70K LumenVsTc-LMP

