

CorePro LEDtube EM/ Mains T8



CorePro LEDtube 1800mm 21W 840 T8

The CorePro LEDtube is an affordable LED solution suitable for replacing T8 fluorescent lamps. The product provides a natural lighting effect for use in general lighting applications, as well as instant energy savings – an environmentally friendly solution.

Warnings and Safety

- NOTES: The overall energy efficiency and light distribution of any installation that uses these lamps are determined by the design of the installation.

Product data

| General Information | |
|----------------------------|----------------------------------|
| Cap-Base | G13 [Medium Bi-Pin Fluorescent] |
| EU RoHS compliant | Yes |
| Nominal Lifetime (Nom) | 30000 h |
| Switching Cycle | 200000X |
| Flux measurement reference | Sphere |

| Light Technical | |
|------------------------------------|---------------------|
| Color Code | 840 [CCT of 4000K] |
| Beam Angle (Nom) | 160 ° |
| Luminous Flux (Nom) | 3100 lm |
| Color Designation | Cool White (CW) |
| Correlated Color Temperature (Nom) | 4000 K |
| Luminous Efficacy (rated) (Nom) | 147.00 lm/W |
| Color Consistency | <6 |
| Color Rendering Index (Nom) | 80 |

| Operating and Electrical | |
|---------------------------------|-------------|
| Input Frequency | 50 to 60 Hz |
| Power (Nom) | 21 W |
| Lamp Current (Max) | 106 mA |
| Lamp Current (Min) | 87 mA |
| Starting Time (Nom) | 0.5 s |
| Warm Up Time to 60% Light (Nom) | 0.5 s |
| Power Factor (Nom) | 0.9 |
| Voltage (Nom) | 220-240 V |

| Temperature | |
|-----------------|--------|
| T-Ambient (Max) | 45 °C |
| T-Ambient (Min) | -20 °C |
| T-Storage (Max) | 65 °C |
| T-Storage (Min) | -40 °C |

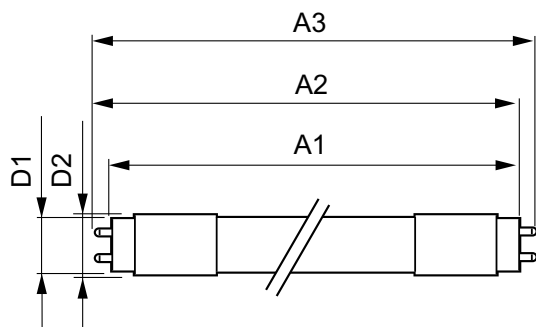
| LLMF At End Of Nominal Lifetime (Nom) 70 % | |
|--|--|
|--|--|

CorePro LEDtube EM/Mains T8

| | |
|---------------------------------|--|
| T-Case Maximum (Nom) | 60 °C |
| Controls and Dimming | |
| Dimmable | No |
| Mechanical and Housing | |
| Bulb Finish | Frosted |
| Bulb Material | Plastic |
| Product Length | 1800 mm |
| Bulb Shape | Tube, double-ended |
| Approval and Application | |
| Energy Efficiency Class | D |
| Energy Saving Product | Yes |
| Approval Marks | RoHS compliance TUV CE marking KEMA Keur certificate |

| | |
|---------------------------------|-----------------------------------|
| Energy Consumption kWh/1000 h | 21 kWh |
| EPREL Registration Number | 403549 |
| Product Data | |
| Full product code | 871951431692800 |
| Order product name | CorePro LEDtube 1800mm 21W 840 T8 |
| EAN/UPC - Product | 8719514316928 |
| Order code | 929002998802 |
| Numerator - Quantity Per Pack | 1 |
| Numerator - Packs per outer box | 10 |
| Material Nr. (12NC) | 929002998802 |
| Net Weight (Piece) | 0.500 kg |

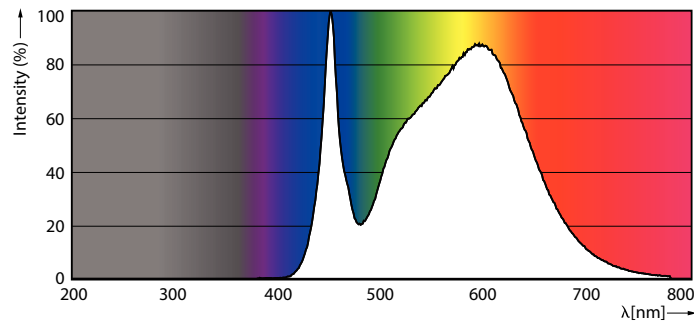
Dimensional drawing



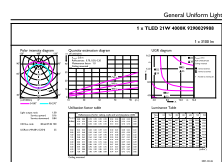
TLED T8 220-240V 21-70W 3100lm 4000K

| Product | D1 | D2 | A1 | A2 | A3 |
|-----------------------------------|---------|-------|-----------|-----------|-----------|
| CorePro LEDtube 1800mm 21W 840 T8 | 25.8 mm | 28 mm | 1762.6 mm | 1769.7 mm | 1776.8 mm |

Photometric data



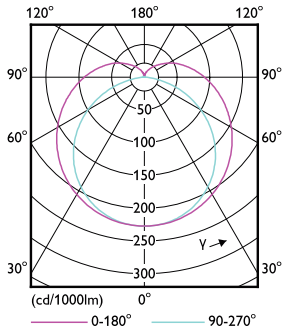
LEDtube COR 21W G13 3100lm 840



LEDtube COR 21W G13 3100lm 840

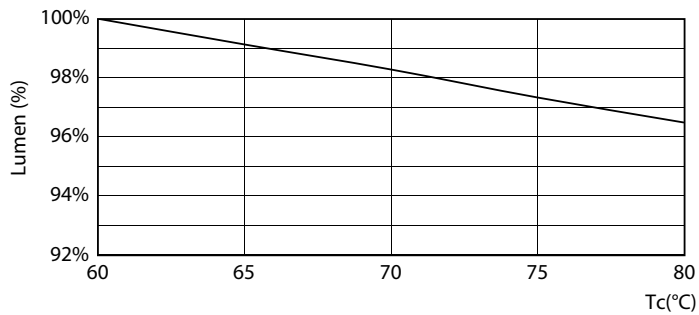
CorePro LEDtube EM/Mains T8

Photometric data

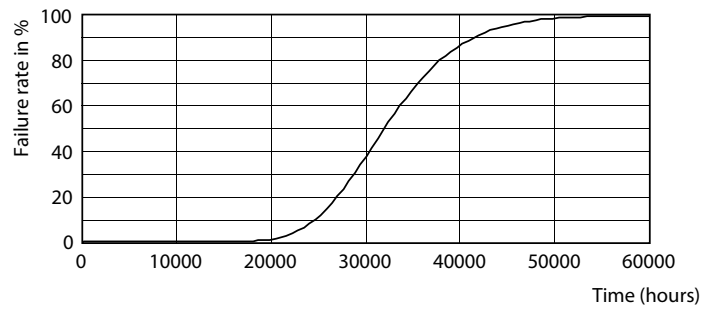


LEDtube MAS 14,7W G13 2300lm

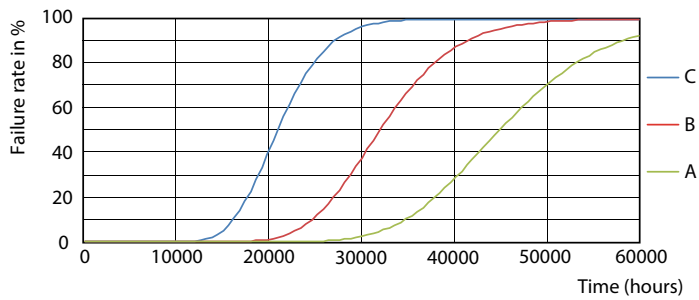
Lifetime



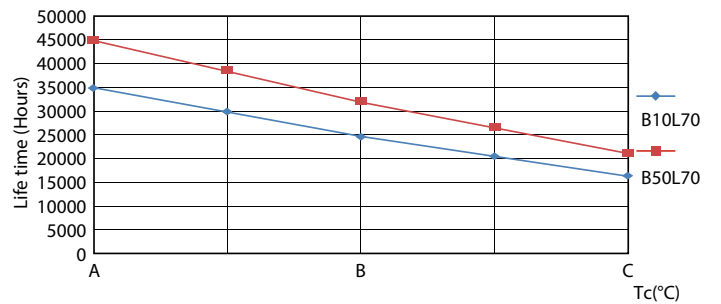
LEDtube MAS 21,7W 70K LumenVsTc



LEDtube 30K



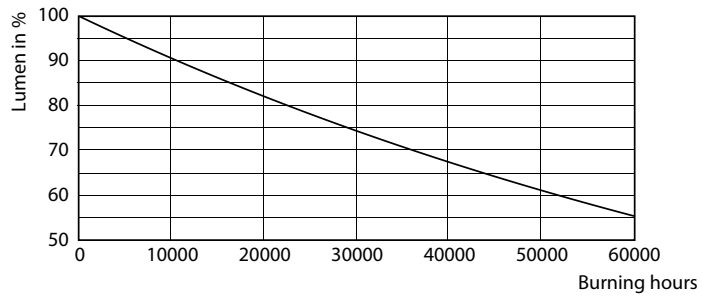
LEDtube 30K FailureRate



LEDtube 30K LifetimeVsTc

CorePro LEDtube EM/Mains T8

Lifetime



LEDtube 30K

