



MASTER Value LEDtube T8



MAS LEDtube VLE 1200mm UO 15.5W 830 T8

A high-performance LED solution, the professional MASTER Value LED tube is ideal for replacing T8 fluorescent lamps using EM ballast or installing directly on the mains. This product provides an optimal combination of value and performance – for use in all general lighting, office, industry, retail, and hospitality applications. The unique design of this LED T8 tube light offers wide compatibility, safety and fast installation, as well as instant energy savings.

Product data

General Information	
Cap-Base	G13 [Medium Bi-Pin Fluorescent]
Nominal lifetime	60,000 hour(s)
Switching Cycle	200,000
Lighting Technology	LED
Flux measurement reference	Sphere
CE mark	Yes
EU RoHS compliant	Yes

Light Technical	
Color Code	830 [CCT of 3000K]
Beam Angle (Nom)	190 degree(s)
Luminous Flux	2,300 lm
Color Designation	White (WH)
Correlated Color Temperature (Nom)	3000 K
Luminous Efficacy (rated) (Nom)	148.00 lm/W
Color Consistency	<6
Color rendering index (CRI)	80
LLMF At End Of Nominal Lifetime (Nom)	70 %

Flickering value (PstLM) - Flickering value as per EN 61000-3-3	1
Stroboscopic effect visibility measure (SVM)	0.4
Photobiological safety according to EN 62471	RG0

Operating and Electrical	
Line Frequency	50 to 60 Hz
Input Frequency	50 to 60 Hz
Power Consumption	15.5 W
Lamp Current (Max)	73 mA
Lamp Current (Min)	67 mA
Starting Time (Nom)	0.5 s
Warm-up time to 60% light	0.5 s
Power Factor (Fraction)	0.9
Voltage (Nom)	220-240 V
LED alternative to fluorescent lamp power	36 W
Inrush current at mains	8.2
Max. lamp no. on MCB B type 10A - Mains	90

MASTER Value LEDtube T8

Max. lamp no. on MCB B type 10A – EM ballast without Comp. Cap.	95
Max. lamp no. on MCB B type 10A – EM ballast with Comp. Cap.	15
Max. lamp no. on MCB B type 16A – Mains	145
Max. lamp no. on MCB B type 16A – EM ballast without Comp. Cap.	150
Max. lamp no. on MCB B type 16A – EM ballast with Comp. Cap.	25
Ballast Compatibility	EM/Mains

Temperature

Ambient temperature range	-20 °C to 45 °C
T-Case Maximum (Nom)	60 °C

Controls and Dimming

Dimmable	No
----------	----

Mechanical and Housing

Bulb Finish	Frosted
Bulb Material	Glass
Product Length	1,200 mm
Bulb Shape	T8

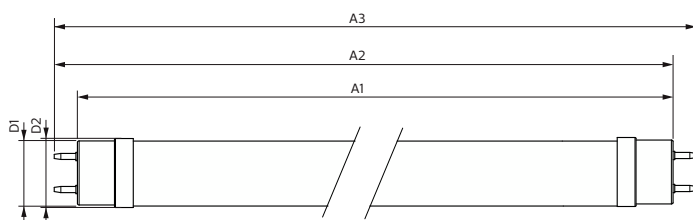
Approval and Application

Energy Efficiency Class	D
Energy Saving Product	Yes
Approval Marks	RoHS compliance TUV CE marking KEMA Keur certificate
Energy Consumption kWh/1000 h	16 kWh
EPREL Registration Number	1095871

Product Data

Order product name	MAS LEDtube VLE 1200mm UO 15.5W 830 T8
Full product name	MAS LEDtube VLE 1200mm UO 15.5W 830 T8
Full product code	871951431680500
Order code	929002997602
Material Nr. (12NC)	929002997602
Numerator - Quantity Per Pack	1
EAN/UPC - Product/Case	8719514316805
Numerator - Packs per outer box	10
EAN/UPC - Case	8719514316812

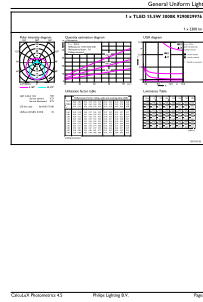
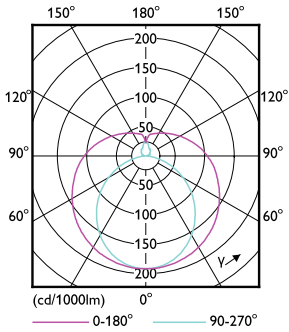
Dimensional drawing



Product	D1	D2	A1	A2	A3
MAS LEDtube VLE 1200mm UO 15.5W 830 T8	25.8 mm	28 mm	1,198.2 mm	1,205.3 mm	1,212.4 mm

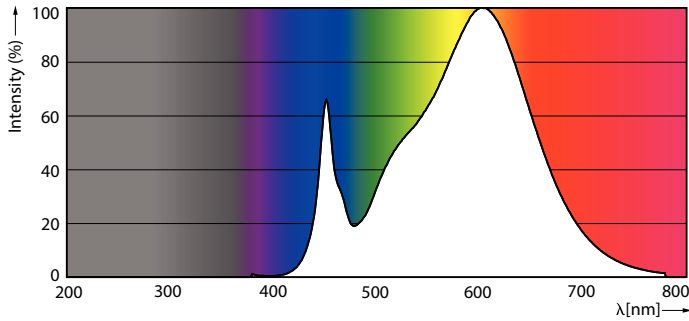
MASTER Value LEDtube T8

Photometric data



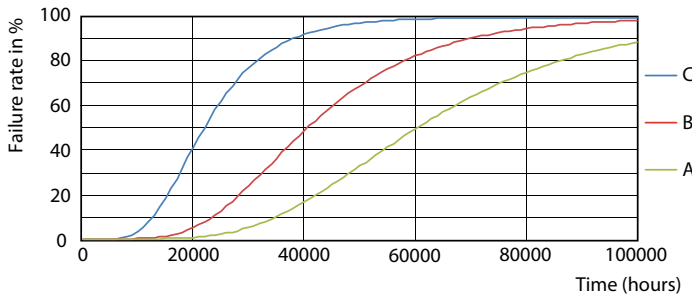
Light Distribution Diagram - MAS LEDtube VLE 1200mm UO 15.5W 830 T8

General uniform lighting - MAS LEDtube VLE 1200mm UO 15.5W 830 T8

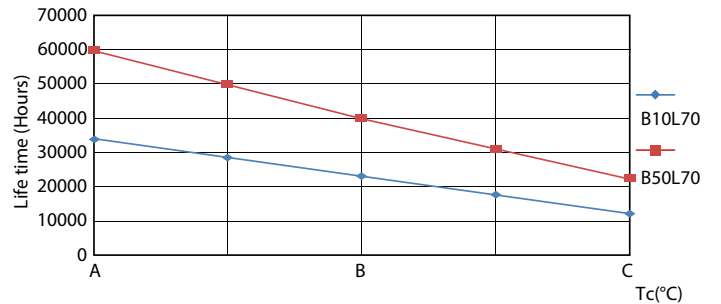


Spectral Power Distribution Colour - MAS LEDtube VLE 1200mm UO 15.5W 830 T8

Lifetime



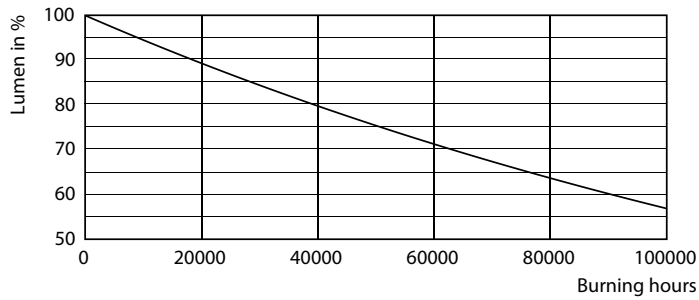
Life Expectancy Diagram - MAS LEDtube VLE 1200mm UO 15.5W 830 T8



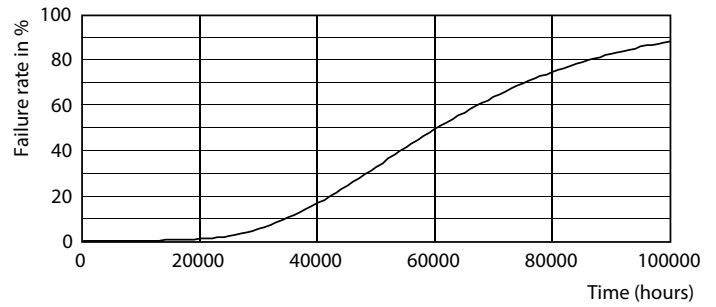
Life Expectancy Diagram - MAS LEDtube VLE 1200mm UO 15.5W 830 T8

MASTER Value LEDtube T8

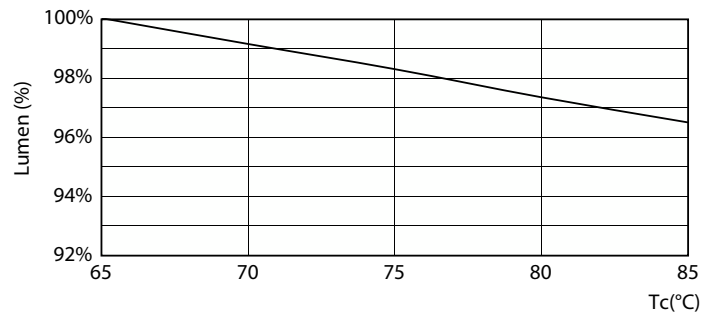
Lifetime



Lumen Maintenance Diagram - MAS LEDtube VLE 1200mm UO 15.5W 830 T8



Life Expectancy Diagram - MAS LEDtube VLE 1200mm UO 15.5W 830 T8



Lumen Maintenance Diagram - MAS LEDtube VLE 1200mm UO 15.5W 830 T8

