



MASTER Value LEDtube Universal T8



MAS LEDtube VLE UN 1500mm UO 23W830 T8

The new Philips MASTER Value LEDtube Universal T8 brings ease and simplicity to your lighting project. That's because you do not need to match the driver technology anymore: a unique design enables the Philips MASTER Value LEDtube Universal T8 to directly fit in luminaires operating on either electromagnetic ballasts or HF electronic ballasts or mains power connection. It is so simple to operate and you no longer need to stock two types of tubes! Perfectly safe, reliable & easy to install Philips MASTER Value LEDtube Universal T8 is the ideal alternative to standard fluorescent tubes to maximize value over lifetime with high energy saving and lower maintenance costs.

Product data

General Information		Color Consistency	
Cap-Base	G13 [Medium Bi-Pin Fluorescent]	Color rendering index (CRI)	<6
Nominal lifetime	60,000 hour(s)	LLMF At End Of Nominal Lifetime (Nom)	80
Switching Cycle	50,000	Flickering value (PstLM) - Flickering value as per EN 61000-3-3	70 %
Lighting Technology	LED	Stroboscopic effect visibility measure (SVM)	1
Flux measurement reference	Sphere	Photobiological safety according to EN 62471	RG0
CE mark	Yes		
EU RoHS compliant	Yes		
Light Technical		Operating and Electrical	
Color Code	830 [CCT of 3000K]	Line Frequency	50 to 60 Hz
Beam Angle (Nom)	190 degree(s)	Input Frequency	50 to 60 Hz
Luminous Flux	3,400 lm	Power Consumption	23 W
Color Designation	White (WH)	Lamp Current (Nom)	106 mA
Correlated Color Temperature (Nom)	3000 K	Starting Time (Nom)	0.5 s
Luminous Efficacy (rated) (Nom)	147 lm/W	Warm-up time to 60% light	0.5 s
		Power Factor (Fraction)	0.9

MASTER Value LEDtube Universal T8

Voltage (Nom)	220-240 V
LED alternative to fluorescent lamp power	58 W
Inrush current at mains	10
Max. lamp no. on MCB B type 10A – Mains	73
Max. lamp no. on MCB B type 10A – EM ballast without Comp. Cap.	73
Max. lamp no. on MCB B type 10A – EM ballast with Comp. Cap.	15
Max. lamp no. on MCB B type 16A – Mains	116
Max. lamp no. on MCB B type 16A – EM ballast without Comp. Cap.	116
Max. lamp no. on MCB B type 16A – EM ballast with Comp. Cap.	25
Ballast Compatibility	Universal

Temperature

Ambient temperature range	-20 to +45 °C
T-Case Maximum (Nom)	55 °C

Controls and Dimming

Dimmable	No
----------	----

Mechanical and Housing

Bulb Finish	Frosted
Bulb Material	Glass

Product Length	1,500 mm
Bulb Shape	T8

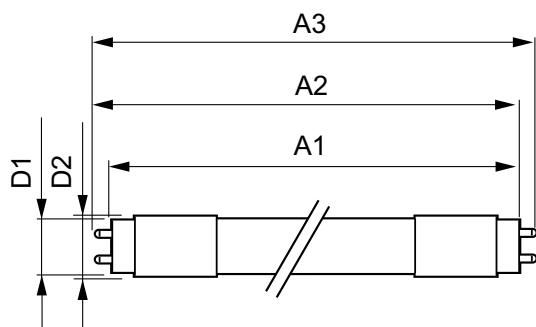
Approval and Application

Energy Efficiency Class	D
Energy Saving Product	Yes
Approval Marks	RoHS compliance TUV CE marking KEMA Keur certificate
Energy Consumption kWh/1000 h	23 kWh
EPREL Registration Number	1195916

Product Data

Order product name	MAS LEDtube VLE UN 1500mm UO 23W830 T8
Full product name	MAS LEDtube VLE UN 1500mm UO 23W830 T8
Full product code	871951431674400
Order code	929002997302
Material Nr. (12NC)	929002997302
Numerator - Quantity Per Pack	1
EAN/UPC - Product/Case	8719514316744
Numerator - Packs per outer box	10
EAN/UPC - Case	8719514316751

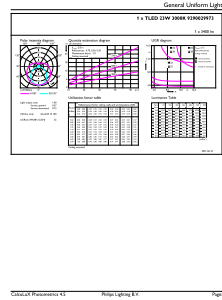
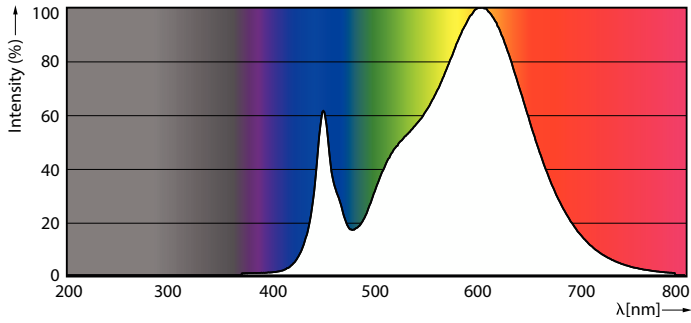
Dimensional drawing



Product	D1	D2	A1	A2	A3
MAS LEDtube VLE UN 1500mm UO 23W830 T8	26 mm	28 mm	1,500 mm	1,506 mm	1,514 mm

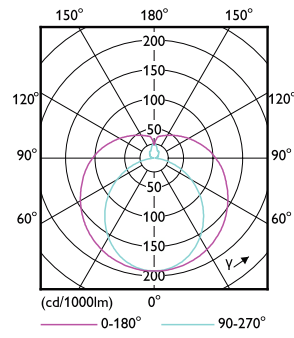
MASTER Value LEDtube Universal T8

Photometric data



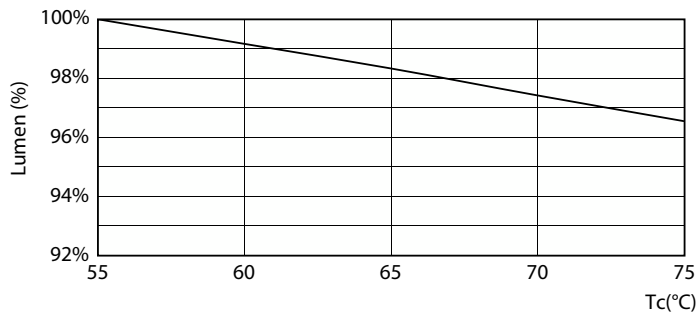
Spectral Power Distribution Colour - MAS LEDtube VLE UN 1500mm UO 23W830 T8

General uniform lighting - MAS LEDtube VLE UN 1500mm UO 23W830 T8

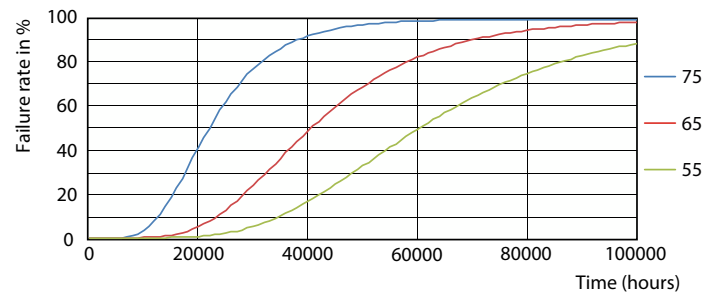


Light Distribution Diagram - MAS LEDtube VLE UN 1500mm UO 23W830 T8

Lifetime



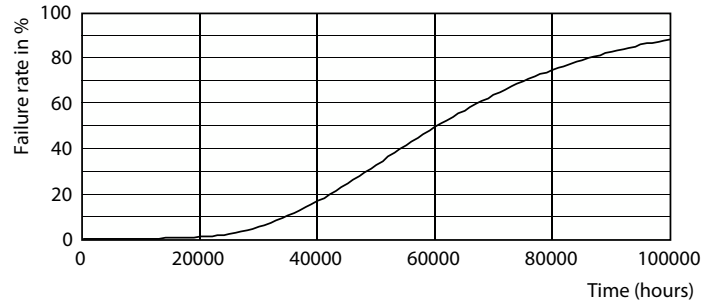
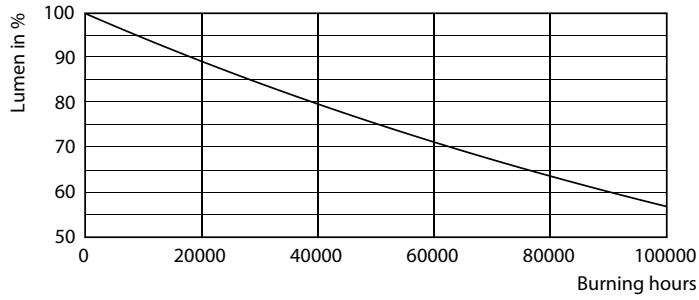
Lumen Maintenance Diagram - MAS LEDtube VLE UN 1500mm UO 23W830 T8



Life Expectancy Diagram - MAS LEDtube VLE UN 1500mm UO 23W830 T8

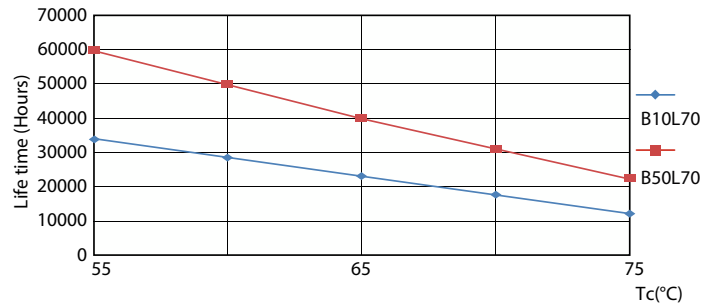
MASTER Value LEDtube Universal T8

Lifetime



Lumen Maintenance Diagram - MAS LEDtube VLE UN 1500mm UO 23W830 T8

Life Expectancy Diagram - MAS LEDtube VLE UN 1500mm UO 23W830 T8



Life Expectancy Diagram - MAS LEDtube VLE UN 1500mm UO 23W830 T8

