



MASTER Value LEDtube Universal T8



MAS LEDtube VLE UN 1200mm UO 15.5W865 T8

The new Philips MASTER Value LEDtube Universal T8 brings ease and simplicity to your lighting project. That's because you do not need to match the driver technology anymore: a unique design enables the Philips MASTER Value LEDtube Universal T8 to directly fit in luminaires operating on either electromagnetic ballasts or HF electronic ballasts or mains power connection. It is so simple to operate and you no longer need to stock two types of tubes! Perfectly safe, reliable & easy to install Philips MASTER Value LEDtube Universal T8 is the ideal alternative to standard fluorescent tubes to maximize value over lifetime with high energy saving and lower maintenance costs.

Product data

General information		Color Consistency	
Cap-Base	G13 [Medium Bi-Pin Fluorescent]	Color Rendering Index (Nom)	80
CE mark	Yes	LLMF At End Of Nominal Lifetime (Nom)	70 %
EU RoHS compliant	Yes	Operating and electrical	
Nominal Lifetime (Nom)	60000 h	Input Frequency	50 to 60 Hz
Switching Cycle	50000	Power (Nom)	15.5 W
Flux measurement reference	Sphere	Lamp Current (Nom)	75 mA
Tier	MASTER Value	Starting Time (Nom)	0.5 s
		Warm Up Time to 60% Light (Nom)	0.5 s
Light technical		Power Factor (Nom)	0.9
Color Code	865 [CCT of 6500K]	Voltage (Nom)	220-240 V
Beam Angle (Nom)	190 °	Temperature	
Luminous Flux (Nom)	2500 lm	T-Ambient (Max)	45 °C
Color Designation	Cool Daylight	T-Ambient (Min)	-20 °C
Correlated Color Temperature (Nom)	6500 K		
Luminous Efficacy (rated) (Nom)	161 lm/W		

MASTER Value LEDtube Universal T8

T-Storage (Max)	65 °C
T-Storage (Min)	-40 °C
T-Case Maximum (Nom)	55 °C

Controls and dimming

Dimmable	No
----------	----

Mechanical and housing

Bulb Finish	Frosted
Bulb Material	Glass
Product Length	1200 mm
Bulb Shape	Tube, double-ended

Approval and application

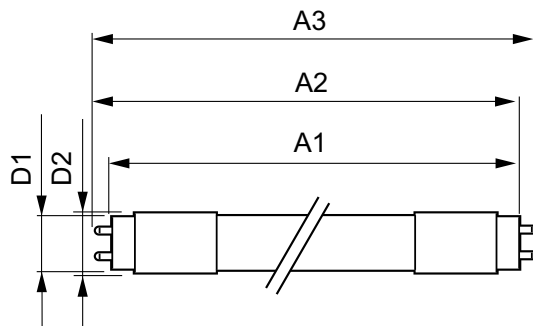
Energy Efficiency Class	C
Energy Saving Product	Yes
Approval Marks	RoHS compliance TUV CE marking KEMA Keur certificate

Energy Consumption kWh/1000 h	16 kWh
EPREL Registration Number	403660

Product data

Full product code	871951431672000
Order product name	MAS LEDtube VLE UN 1200mm UO 15.5W865 T8
EAN/UPC - Product	8719514316720
Order code	929002997202
Numerator - Quantity Per Pack	1
Numerator - Packs per outer box	10
Material Nr. (12NC)	929002997202
Net Weight (Piece)	0.215 kg

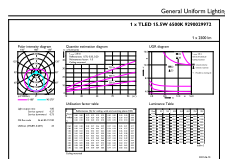
Dimensional drawing



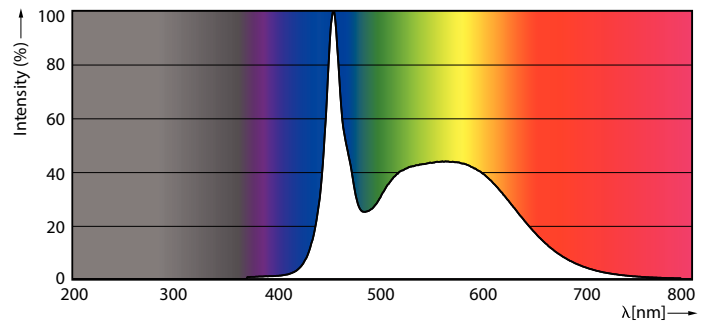
MAS LEDtube VLE UN 1200mm UO 15.5W865 T8

Product	D1	D2	A1	A2	A3
MAS LEDtube VLE UN 1200mm UO 15.5W865 T8	26 mm	28 mm	1199 mm	1205 mm	1213 mm

Photometric data



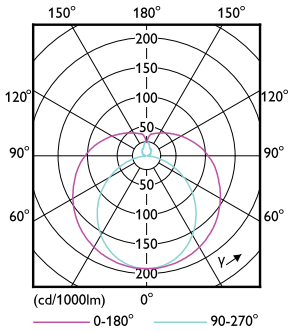
LEDtube MAS 1 15,5W G13 2500lm 865-GUL



LEDtube MAS 1 15,5W G13 2500lm 865-POC

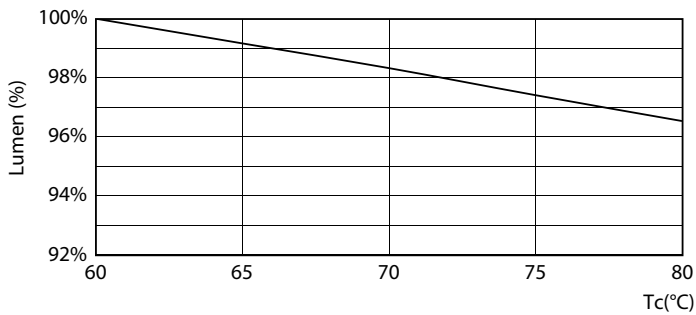
MASTER Value LEDtube Universal T8

Photometric data

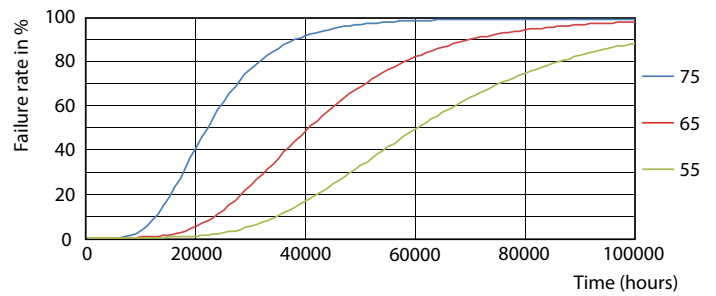


LEDtube MAS 1 15,5W G13 2300lm-LDD

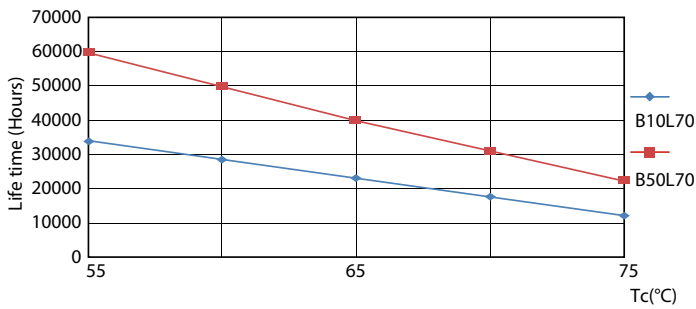
Lifetime



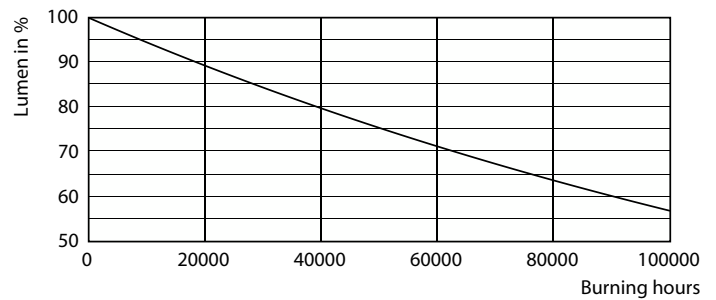
LEDtube MAS 1 15,5W 60K LumenVsTc-LMP



LEDtube MAS 1 15,5W 60K FailureRate-LED



LEDtube MAS 1 15,5W 60K LifetimeVsTc-LED



Lumen Maintenance Diagram

MASTER Value LEDtube Universal T8

Lifetime



Life Expectancy Diagram

