



# MASTER Value LEDtube Universal T8



## MAS LEDtube VLE UN 1200mm UO 15.5W840 T8

The new Philips MASTER Value LEDtube Universal T8 brings ease and simplicity to your lighting project. That's because you do not need to match the driver technology anymore: a unique design enables the Philips MASTER Value LEDtube Universal T8 to directly fit in luminaires operating on either electromagnetic ballasts or HF electronic ballasts or mains power connection. It is so simple to operate and you no longer need to stock two types of tubes! Perfectly safe, reliable & easy to install Philips MASTER Value LEDtube Universal T8 is the ideal alternative to standard fluorescent tubes to maximize value over lifetime with high energy saving and lower maintenance costs.

### Product data

General information	
Cap-Base	G13 [ Medium Bi-Pin Fluorescent]
EU RoHS compliant	Yes
Nominal Lifetime (Nom)	60000 h
Switching Cycle	50000
Flux measurement reference	Sphere
Tier	MASTER Value

Light technical	
Color Code	840 [ CCT of 4000K]
Beam Angle (Nom)	190 °
Luminous Flux (Nom)	2500 lm
Color Designation	Cool White (CW)
Correlated Color Temperature (Nom)	4000 K
Luminous Efficacy (rated) (Nom)	161 lm/W
Color Consistency	<6

Color Rendering Index (Nom)	80
LLMF At End Of Nominal Lifetime (Nom)	70 %

Operating and electrical	
Input Frequency	50 to 60 Hz
Power (Nom)	15.5 W
Lamp Current (Nom)	75 mA
Starting Time (Nom)	0.5 s
Warm Up Time to 60% Light (Nom)	0.5 s
Power Factor (Nom)	0.9
Voltage (Nom)	220-240 V

Temperature	
T-Ambient (Max)	45 °C
T-Ambient (Min)	-20 °C
T-Storage (Max)	65 °C

# MASTER Value LEDtube Universal T8

T-Storage (Min)	-40 °C
T-Case Maximum (Nom)	55 °C

## Controls and dimming

Dimmable	No
----------	----

## Mechanical and housing

Bulb Finish	Frosted
Bulb Material	Glass
Product Length	1200 mm
Bulb Shape	Tube, double-ended

## Approval and application

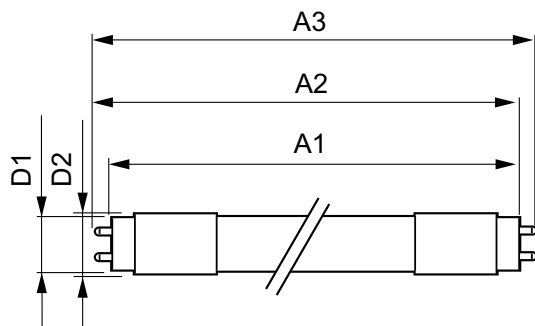
Energy Efficiency Class	C
Energy Saving Product	Yes
Approval Marks	RoHS compliance TUV CE marking KEMA Keur certificate

Energy Consumption kWh/1000 h	16 kWh
EPREL Registration Number	403659

## Product data

Full product code	871951431670600
Order product name	MAS LEDtube VLE UN 1200mm UO 15.5W840 T8
EAN/UPC - Product	8719514316706
Order code	929002997102
Numerator - Quantity Per Pack	1
Numerator - Packs per outer box	10
Material Nr. (12NC)	929002997102
Net Weight (Piece)	0.215 kg

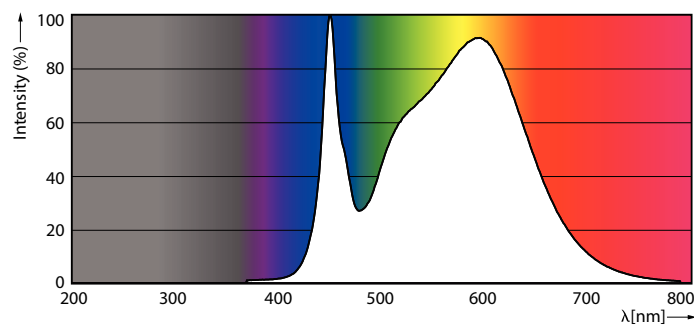
## Dimensional drawing



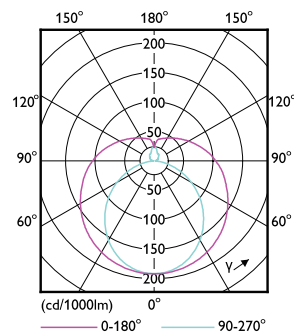
MAS LEDtube VLE UN 1200mm UO 15.5W840 T8

Product	D1	D2	A1	A2	A3
MAS LEDtube VLE UN 1200mm UO 15.5W840 T8	26 mm	28 mm	1199 mm	1205 mm	1213 mm

## Photometric data



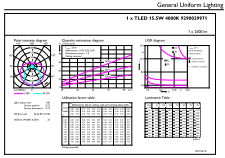
LEDtube MAS 1 15,5W G13 2500lm 840-POC



LEDtube MAS 1 15,5W G13 2300lm-LDD

# MASTER Value LEDtube Universal T8

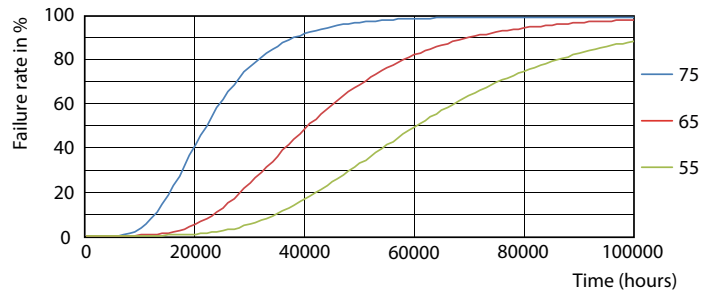
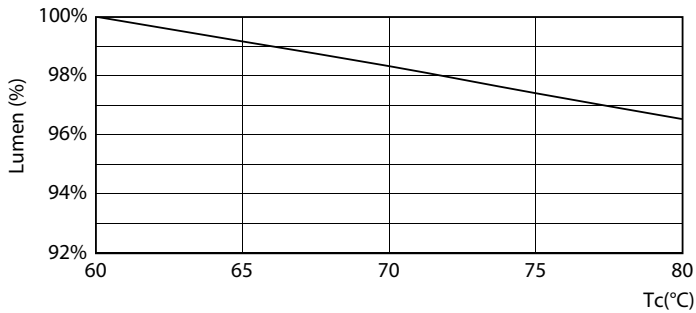
## Photometric data



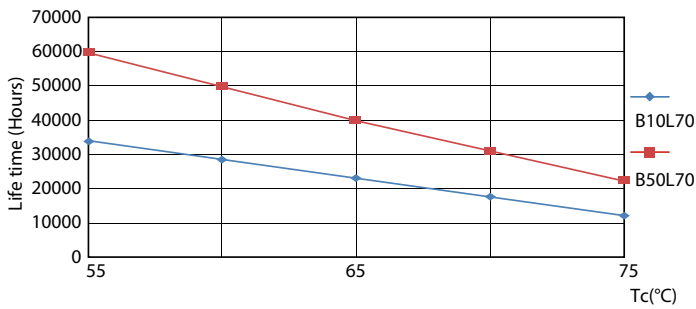
© 2022 Philips Lighting B.V. Page 10

**LEDtube MAS 1 15,5W G13 2500lm 840-GUL**

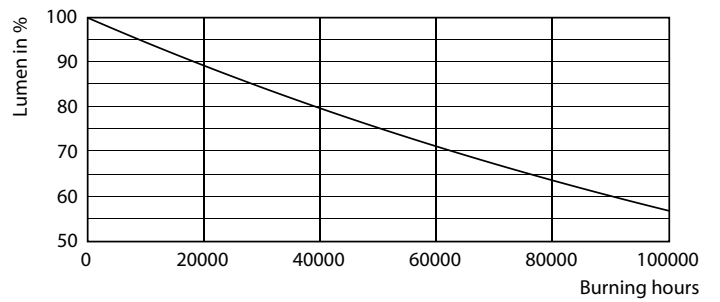
## Lifetime



**LEDtube MAS 1 15,5W 60K LumenVsTc-LMP**



**LEDtube MAS 1 15,5W 60K FailureRate-LED**



**LEDtube MAS 1 15,5W 60K LifetimeVsTc-LED**

**Lumen Maintenance Diagram**

# MASTER Value LEDtube Universal T8

## Lifetime



### Life Expectancy Diagram

