



MASTER LEDtube EM/ Mains T8

MASTER LEDtube DE 1200mm 13W840 100-240V T8

The Philips MASTER LEDtube integrates a LED light source into a traditional fluorescent form factor. Its unique design creates a perfectly uniform visual appearance which cannot be distinguished from traditional fluorescent. For those that are looking for value for money within limited budget and re-lamping efforts for better light effect and lifetime.

Warnings and Safety

- NOTES: The overall energy efficiency and light distribution of any installation that uses these lamps are determined by the design of the installation.

Product data

General Information		Color Rendering Index (Nom)	
Cap-Base	G13 [Medium Bi-Pin Fluorescent]		80
EU RoHS compliant	Yes	LLMF At End Of Nominal Lifetime (Nom) 70 %	
Nominal Lifetime (Nom)	50000 h	Operating and Electrical	
Switching Cycle	200000X	Input Frequency	50 to 60 Hz
Light Technical		Power (Nom)	13 W
Color Code	840 [CCT of 4000K]	Lamp Current (Max)	150 mA
Beam Angle (Nom)	240 °	Lamp Current (Min)	53 mA
Luminous Flux (Nom)	2100 lm	Starting Time (Nom)	0.5 s
Color Designation	Cool White (CW)	Warm Up Time to 60% Light (Nom)	0.5 s
Correlated Color Temperature (Nom)	4000 K	Power Factor (Nom)	0.9
Luminous Efficacy (rated) (Nom)	161.00 lm/W	Voltage (Nom)	100-240 V
Color Consistency	<6		

MASTER LEDtube EM/Mains T8

Temperature

T-Ambient (Max)	45 °C
T-Ambient (Min)	-20 °C
T-Storage (Max)	65 °C
T-Storage (Min)	-40 °C
T-Case Maximum (Nom)	65 °C

Controls and Dimming

Dimmable	No
----------	----

Mechanical and Housing

Bulb Finish	Frosted
Bulb Material	Glass
Product Length	1200 mm
Bulb Shape	Tube, double-ended

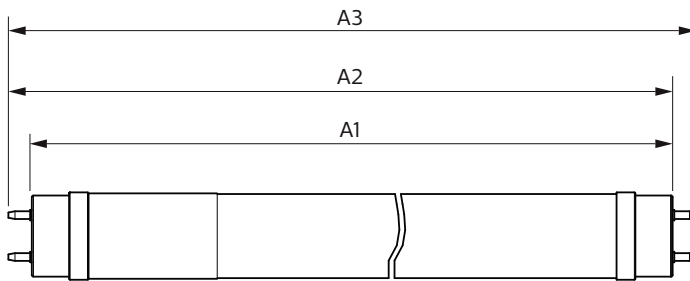
Approval and Application

Energy Saving Product	Yes
Approval Marks	RoHS compliance KEMA Keur certificate

Product Data

Full product code	871951430116000
Order product name	MASTER LEDtube DE 1200mm 13W840 100-240V T8
EAN/UPC - Product	8719514301160
Order code	929002489008
Numerator - Quantity Per Pack	1
Numerator - Packs per outer box	20
Material Nr. (12NC)	929002489008
Net Weight (Piece)	0.215 kg

Dimensional drawing

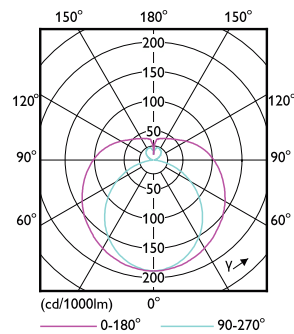
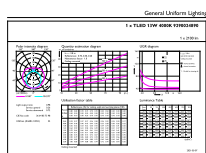


Product

MASTER LEDtube DE 1200mm 13W840 100-240V T8

T8 MasValue Mains DE 1200mm 13W 840 G13

Photometric data

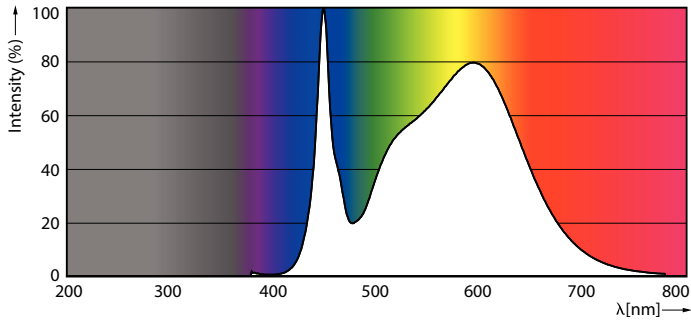


LEDtube MAS TW 13W G13 2100lm 840-GUL

LEDtube MAS TW 13W G13 2100lm-LDD

MASTER LEDtube EM/Mains T8

Photometric data

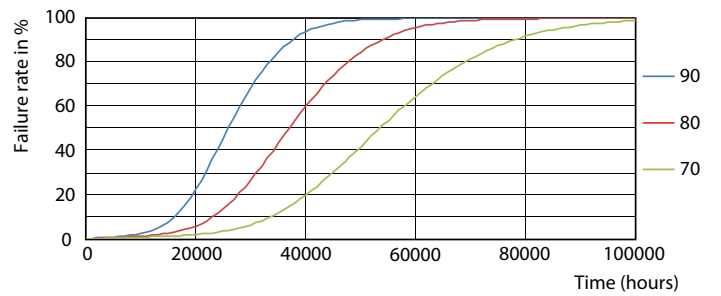


LEDtube MAS TW 13W G13 2100lm 840-POC

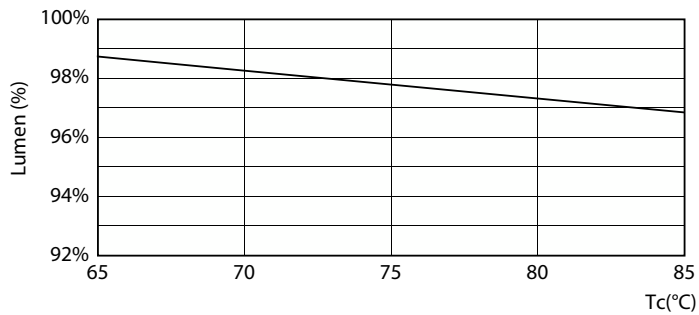
Lifetime



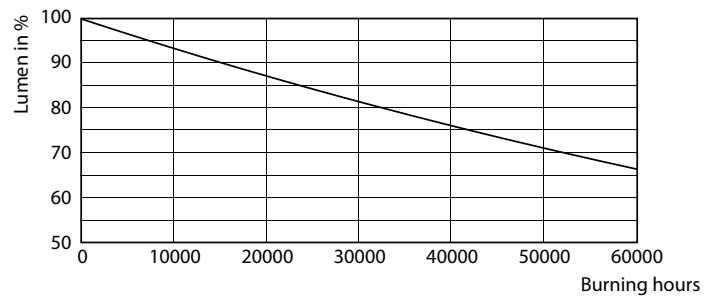
LEDtube 50K-LED



LEDtube 50K 7090 FailureRate-LED



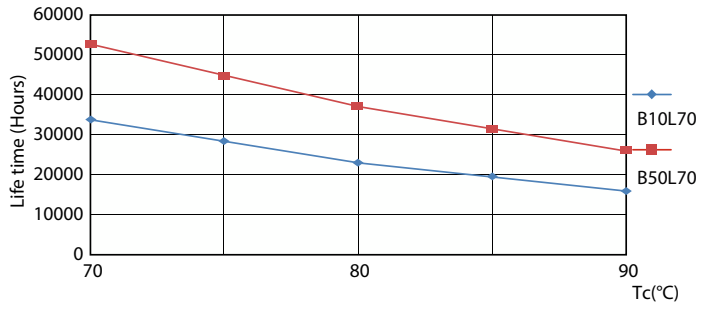
LEDtube MAS TW 6,5W 50K LumenVsTc-LMP



LEDtube 50K-LMP

MASTER LEDtube EM/Mains T8

Lifetime



LEDtube 50K 7090 LifetimeVsTc-LED

