



# MASTER LEDtube EM/ Mains T8

## MASTER LEDtube DE 580mm 6.5W840 100-240V T8

The Philips MASTER LEDtube integrates a LED light source into a traditional fluorescent form factor. Its unique design creates a perfectly uniform visual appearance, which cannot be distinguished from traditional fluorescent. These T8 LED tubes are the right choice for absolute performance and are designed to stand up to everyday conditions. Unparalleled savings thanks to low energy consumption and an exceptionally long lifetime ensure this tube masters every demanding application.

### Warnings and Safety

- NOTE: The overall energy efficiency and light distribution of any installation that uses these lamps will be determined by the design of the installation.

### Product data

General information		Luminous Efficacy (rated) (Nom)	
Cap-Base	G13 [ Medium Bi-Pin Fluorescent]	Luminous Efficacy (rated) (Nom)	161.00 lm/W
EU RoHS compliant	Yes	Color Consistency	<6
Nominal Lifetime (Nom)	50000 h	Color Rendering Index (Nom)	80
Switching Cycle	200000	LLMF At End Of Nominal Lifetime (Nom)	70 %
Light technical		Operating and electrical	
Color Code	840 [ CCT of 4000K]	Input Frequency	50 to 60 Hz
Beam Angle (Nom)	240 °	Power (Nom)	6.5 W
Luminous Flux (Nom)	1050 lm	Lamp Current (Max)	73 mA
Color Designation	Cool White (CW)	Lamp Current (Min)	26 mA
Correlated Color Temperature (Nom)	4000 K	Starting Time (Nom)	0.5 s
		Warm Up Time to 60% Light (Nom)	0.5 s

# MASTER LEDtube EM/Mains T8

Power Factor (Nom)	0.9
Voltage (Nom)	100-240 V

## Temperature

T-Ambient (Max)	45 °C
T-Ambient (Min)	-20 °C
T-Storage (Max)	65 °C
T-Storage (Min)	-40 °C
T-Case Maximum (Nom)	65 °C

## Controls and dimming

Dimmable	No
----------	----

## Mechanical and housing

Bulb Finish	Frosted
Bulb Material	Glass
Product Length	600 mm
Bulb Shape	Tube, double-ended

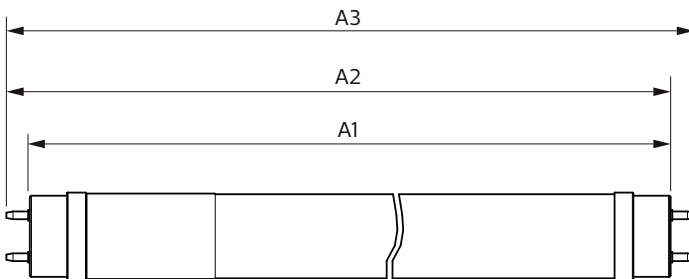
## Approval and application

Energy Saving Product	Yes
Approval Marks	RoHS compliance KEMA Keur certificate

## Product data

Full product code	871951430114600
Order product name	MASTER LEDtube DE 580mm 6.5W840 100-240V T8
EAN/UPC - Product	8719514301146
Order code	929002488908
Numerator - Quantity Per Pack	1
Numerator - Packs per outer box	20
Material Nr. (12NC)	929002488908
Net Weight (Piece)	0.120 kg

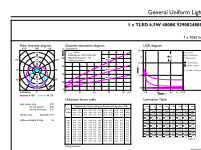
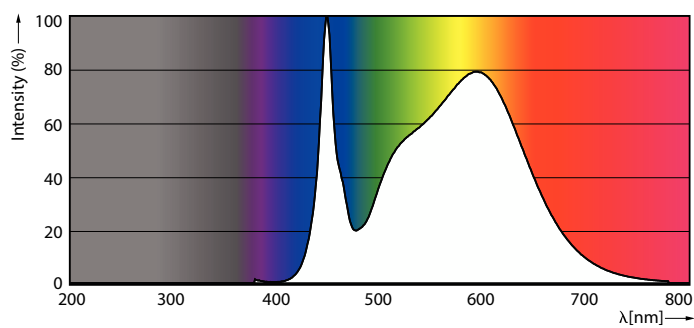
## Dimensional drawing



Product	D1	D2	A1	A2	A3
MASTER LEDtube DE 580mm 6.5W840 100-240V T8	26 mm	28 mm	580 mm	587 mm	594 mm

MASTER LEDtube DE 580mm 6.5W840 100-240V T8

## Photometric data

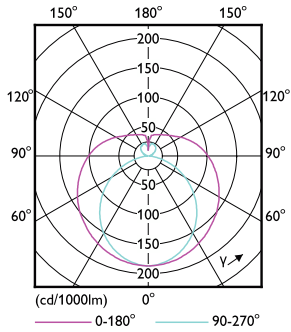


LEDtube MAS TW 6,5W G13 1050lm 840-GUL

LEDtube MAS TW 6,5W G13 1050lm 840-POC

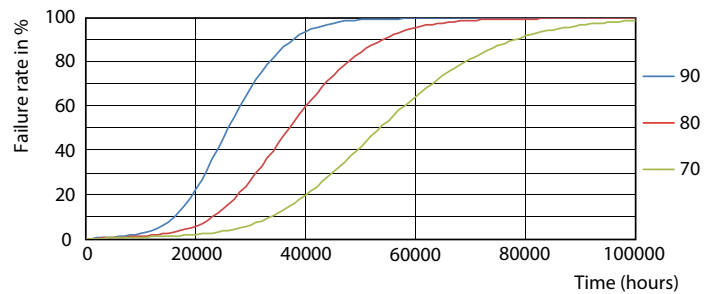
# MASTER LEDtube EM/Mains T8

## Photometric data



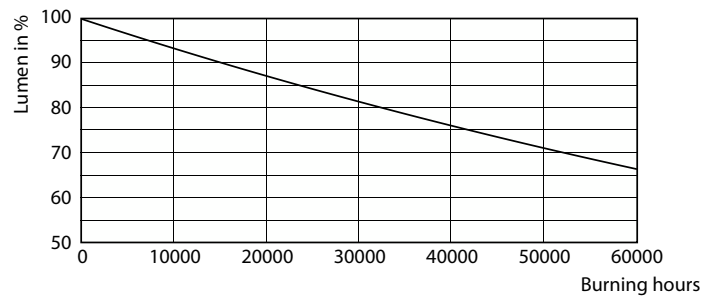
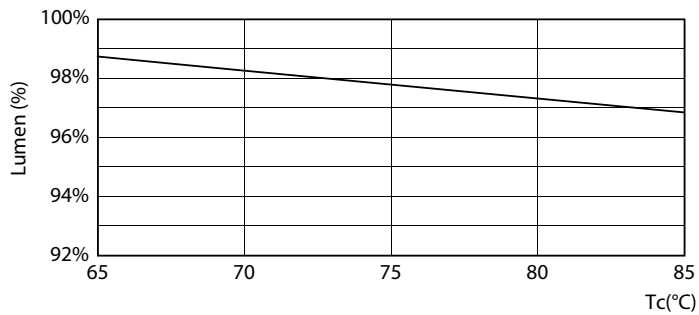
LEDtube MAS TW 6,5W G13 1050lm-LDD

## Lifetime



Life Expectancy Diagram

FailureRate



LEDtube MAS TW 6,5W 50K LumenVsTc-LMP

Lumen Maintenance Diagram

# MASTER LEDtube EM/Mains T8

## Lifetime



LifetimeVsTc

