



# MASTER LEDtube EM/ Mains T8

## MAS LEDtube DE 580mm 6.5W865 100-240V T8

The Philips MASTER LEDtube integrates a LED light source into a traditional fluorescent form factor. Its unique design creates a perfectly uniform visual appearance, which cannot be distinguished from traditional fluorescent. These T8 LED tubes are the right choice for absolute performance and are designed to stand up to everyday conditions. Unparalleled savings thanks to low energy consumption and an exceptionally long lifetime ensure this tube masters every demanding application.

### Warnings and Safety

- NOTE: The overall energy efficiency and light distribution of any installation that uses these lamps will be determined by the design of the installation.

### Product data

| General Information |                                 |
|---------------------|---------------------------------|
| Cap-Base            | G13 [Medium Bi-Pin Fluorescent] |
| Nominal lifetime    | 50,000 hour(s)                  |
| Switching Cycle     | 200,000                         |
| Lighting Technology | LED                             |
| EU RoHS compliant   | Yes                             |

| Light Technical                    |                    |
|------------------------------------|--------------------|
| Color Code                         | 865 [CCT of 6500K] |
| Beam Angle (Nom)                   | 240 degree(s)      |
| Luminous Flux                      | 1,050 lm           |
| Color Designation                  | Cool Daylight      |
| Correlated Color Temperature (Nom) | 6500 K             |
| Luminous Efficacy (rated) (Nom)    | 161.00 lm/W        |

|                                       |      |
|---------------------------------------|------|
| Color Consistency                     | <6   |
| Color rendering index (CRI)           | 80   |
| LLMF At End Of Nominal Lifetime (Nom) | 70 % |

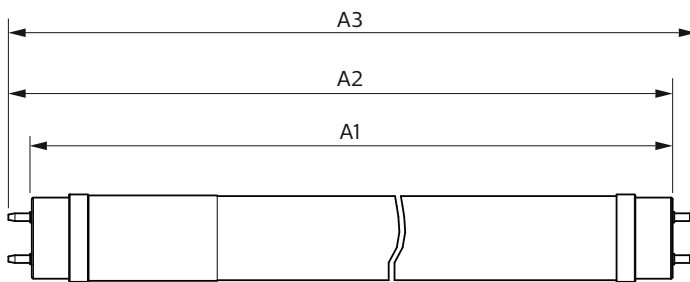
| Operating and Electrical  |             |
|---------------------------|-------------|
| Line Frequency            | 50 to 60 Hz |
| Input Frequency           | 50 to 60 Hz |
| Power Consumption         | 6.5 W       |
| Lamp Current (Max)        | 73 mA       |
| Lamp Current (Min)        | 26 mA       |
| Starting Time (Nom)       | 0.5 s       |
| Warm-up time to 60% light | 0.5 s       |
| Power Factor (Fraction)   | 0.9         |

# MASTER LEDtube EM/Mains T8

|                                 |                 |
|---------------------------------|-----------------|
| Voltage (Nom)                   | 100-240 V       |
| <b>Temperature</b>              |                 |
| Ambient temperature range       | -20 °C to 45 °C |
| T-Case Maximum (Nom)            | 65 °C           |
| <b>Controls and Dimming</b>     |                 |
| Dimmable                        | No              |
| <b>Mechanical and Housing</b>   |                 |
| Bulb Finish                     | Frosted         |
| Bulb Material                   | Glass           |
| Product Length                  | 600 mm          |
| Bulb Shape                      | T8              |
| <b>Approval and Application</b> |                 |
| Energy Saving Product           | Yes             |

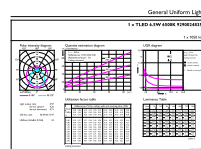
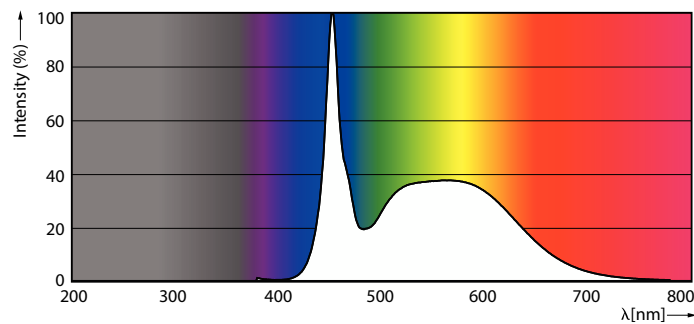
|                                 |  |
|---------------------------------|--|
| Approval Marks                  | RoHS compliance KEMA Keur certificate    |
| <b>Product Data</b>             |  |
| Order product name              | MAS LEDtube DE 580mm 6.5W865 100-240V T8 |
| Full product name               | MAS LEDtube DE 580mm 6.5W865 100-240V T8 |
| Full product code               | 871951430110800                          |
| Order code                      | 929002483508                             |
| Material Nr. (12NC)             | 929002483508                             |
| Numerator - Quantity Per Pack   | 1  |
| EAN/UPC - Product/Case          | 8719514301108                            |
| Numerator - Packs per outer box | 20                                       |
| EAN/UPC - Case                  | 8719514301115                            |

## Dimensional drawing



| Product                                  | D1    | D2    | A1     | A2     | A3     |
|--|-------|-------|--------|--------|--------|
| MAS LEDtube DE 580mm 6.5W865 100-240V T8 | 26 mm | 28 mm | 580 mm | 587 mm | 594 mm |

## Photometric data



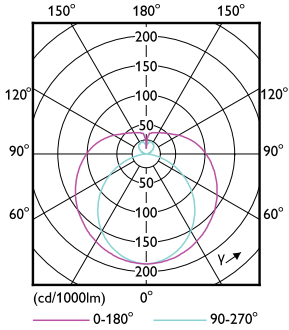
General uniform lighting - MAS LEDtube DE 580mm 6.5W865 100-240V T8

Spectral Power Distribution Colour - MAS LEDtube DE 580mm 6.5W865 100-240V T8

General uniform lighting - MAS LEDtube DE 580mm 6.5W865 100-240V T8

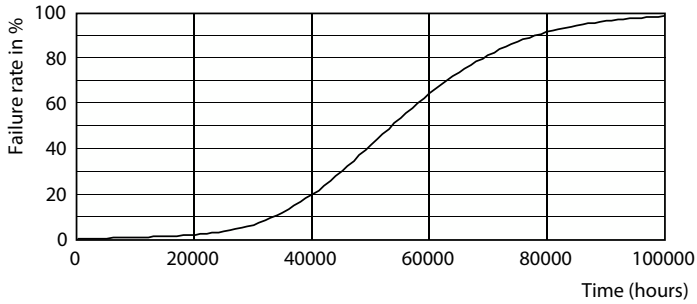
# MASTER LEDtube EM/Mains T8

## Photometric data

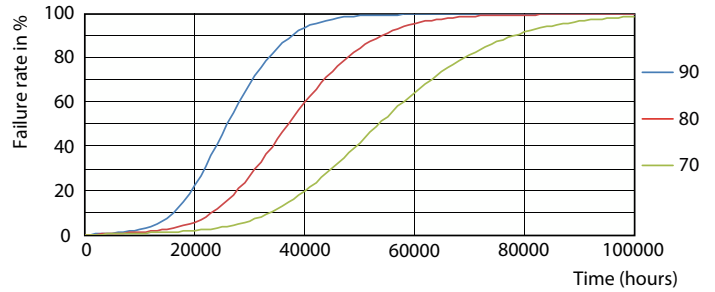


Light Distribution Diagram - MAS LEDtube DE 580mm 6.5W865 100-240V T8

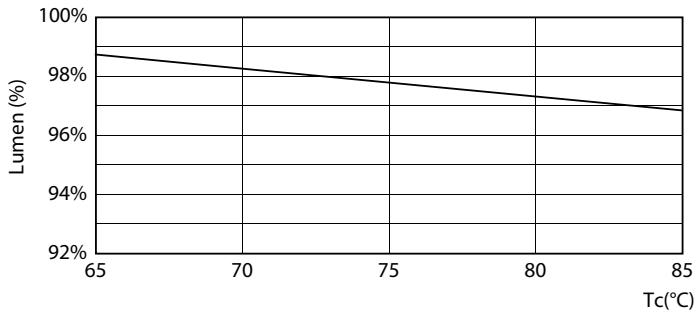
## Lifetime



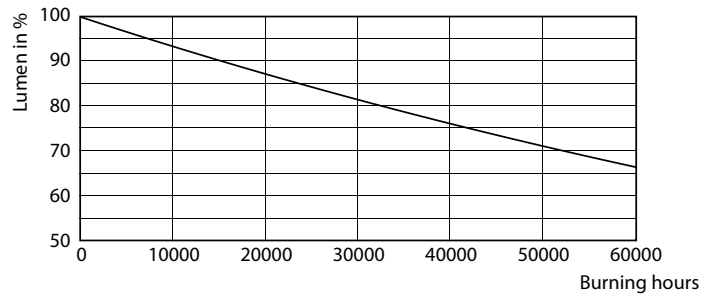
Life Expectancy Diagram - MAS LEDtube DE 580mm 6.5W865 100-240V T8



Life Expectancy Diagram - MAS LEDtube DE 580mm 6.5W865 100-240V T8



Lumen Maintenance Diagram - MAS LEDtube DE 580mm 6.5W865 100-240V T8



Lumen Maintenance Diagram - MAS LEDtube DE 580mm 6.5W865 100-240V T8

# MASTER LEDtube EM/Mains T8

## Lifetime



Life Expectancy Diagram - MAS LEDtube DE 580mm 6.5W865 100-240V T8

